

Product datasheet for **TA372618S**

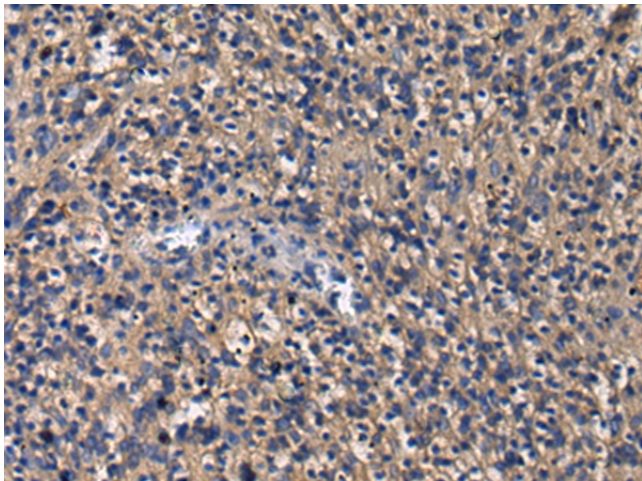
GIGYF1 Rabbit Polyclonal Antibody

Product data:

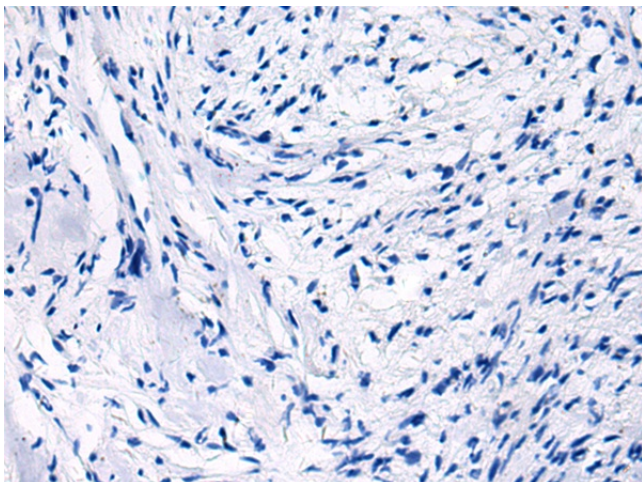
Product Type:	Primary Antibodies
Applications:	IHC
Recommended Dilution:	IHC: 50-100 Positive control: Human brain Predicted cell location: Cytoplasm
Reactivity:	Human
Host:	Rabbit
Isotype:	IgG
Clonality:	Polyclonal
Immunogen:	Synthetic peptide of human GIGYF1
Formulation:	pH7.4 PBS, 0.05% NaN ₃ , 40% Glycerol
Concentration:	lot specific
Purification:	Antigen affinity purification
Conjugation:	Unconjugated
Storage:	Store at -20°C.
Stability:	1 year
Gene Name:	GRB10 interacting GYF protein 1
Database Link:	Entrez Gene 64599 Human O75420
Background:	This gene encodes a member of the gyf family of adaptor proteins. The encoded protein contains a gyf protein interaction domain. It binds growth factor receptor bound 10, another adaptor protein that binds activated insulin-like growth factor 1 and insulin receptors and regulates receptor signaling.
Synonyms:	CDS2; GYF1; PERQ1



[View online »](#)

Product images:

Immunohistochemistry of paraffin-embedded Human brain using [TA372618] (GIGYF1 Antibody) at dilution 1/30 (Original magnification: $\times 200$)



Immunohistochemistry of paraffin-embedded Human brain using [TA372618] (GIGYF1 Antibody) at dilution 1/30, treated with synthetic peptide. (Original magnification: $\times 200$)