

## Product datasheet for **TA372608S**

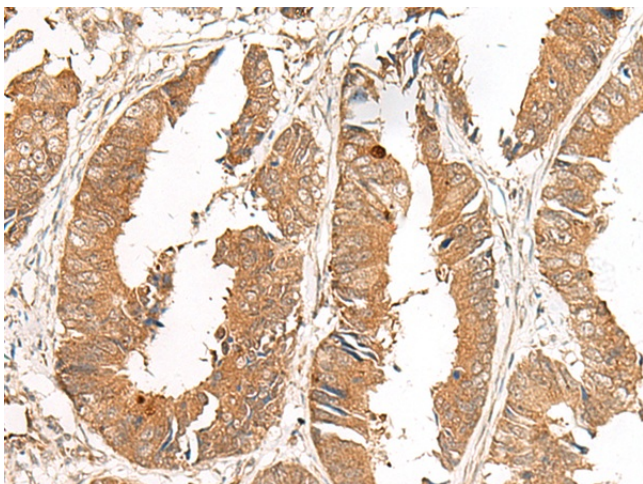
### GCC2 Rabbit Polyclonal Antibody

#### Product data:

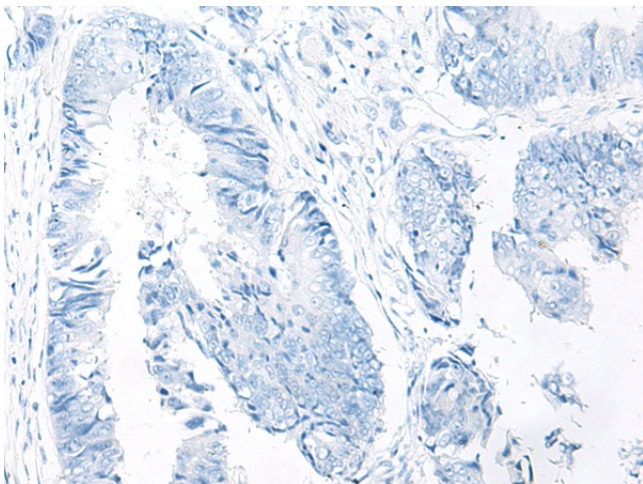
Product Type:	Primary Antibodies
Applications:	IHC
Recommended Dilution:	IHC: 50-300 Positive control: Human colorectal cancer Predicted cell location: Cytoplasm and Cell membrane
Reactivity:	Human, Mouse, Rat
Host:	Rabbit
Isotype:	IgG
Clonality:	Polyclonal
Immunogen:	Synthetic peptide of human GCC2
Formulation:	pH7.4 PBS, 0.05% NaN <sub>3</sub> , 40% Glycerol
Concentration:	lot specific
Purification:	Antigen affinity purification
Conjugation:	Unconjugated
Storage:	Store at -20°C.
Stability:	1 year
Gene Name:	GRIP and coiled-coil domain containing 2
Database Link:	<a href="#">Entrez Gene 9648 Human Q8IWJ2</a>
Background:	The protein encoded by this gene is a peripheral membrane protein localized to the trans-Golgi network. It is sensitive to brefeldin A. This encoded protein contains a GRIP domain which is thought to be used in targeting. Alternative splicing results in multiple transcript variants.
Synonyms:	GCC185; KIAA0336; RANBP2L4; REN53



[View online »](#)

**Product images:**

Immunohistochemistry of paraffin-embedded Human colorectal cancer tissue using [TA372608] (GCC2 Antibody) at dilution 1/50 (Original magnification:  $\times 200$ )



Immunohistochemistry of paraffin-embedded Human colorectal cancer tissue using [TA372608] (GCC2 Antibody) at dilution 1/50, treated with synthetic peptide. (Original magnification:  $\times 200$ )