

Product datasheet for **TA372602**

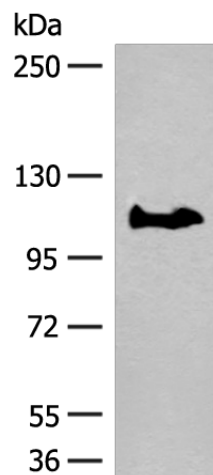
GARNL3 Rabbit Polyclonal Antibody

Product data:

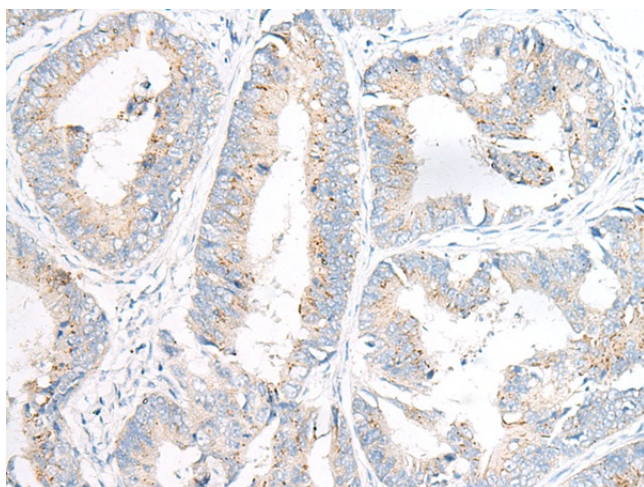
Product Type:	Primary Antibodies
Applications:	IHC, WB
Recommended Dilution:	WB: 500-2000 WB positive control: PC-3 cell lysate IHC: 30-150 Positive control: Human colorectal cancer Predicted cell location: Cell membrane
Reactivity:	Human, Mouse
Host:	Rabbit
Isotype:	IgG
Clonality:	Polyclonal
Immunogen:	Synthetic peptide of human GARNL3
Formulation:	pH7.4 PBS, 0.05% NaN ₃ , 40% Glycerol
Concentration:	lot specific
Purification:	Antigen affinity purification
Conjugation:	Unconjugated
Storage:	Store at -20°C.
Stability:	1 year
Predicted Protein Size:	113 kDa
Gene Name:	GTPase activating Rap/RanGAP domain like 3
Database Link:	Entrez Gene 84253 Human Q5VWW2
Background:	The function of this protein remains unknown.
Synonyms:	bA356B19.1; DKFZp434O131; DKFZp761J1523; FLJ38360



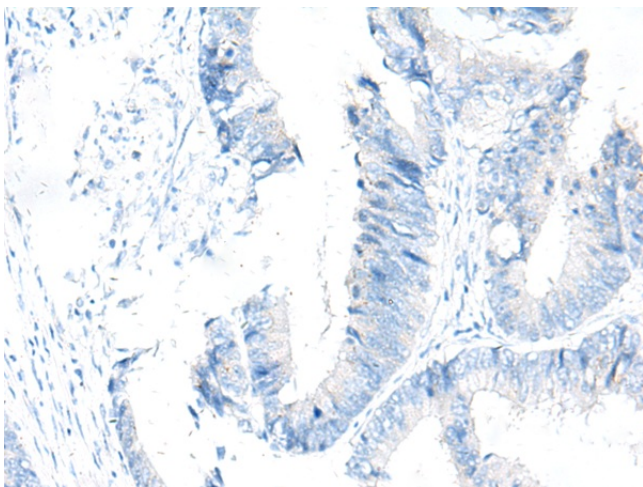
[View online »](#)

Product images:

Gel: 6%SDS-PAGE
Lysate: 40 μ g
Lane: PC-3 cell lysate
Primary antibody: TA372602 (GARNL3 Antibody) at dilution 1/400
Secondary antibody: Goat anti rabbit IgG at 1/8000 dilution
Exposure time: 1 minute



Immunohistochemistry of paraffin-embedded Human colorectal cancer tissue using TA372602 (GARNL3 Antibody) at dilution 1/100 (Original magnification: \times 200)



Immunohistochemistry of paraffin-embedded Human colorectal cancer tissue using TA372602 (GARNL3 Antibody) at dilution 1/100, treated with synthetic peptide. (Original magnification: $\times 200$)