

Product datasheet for **TA372595**

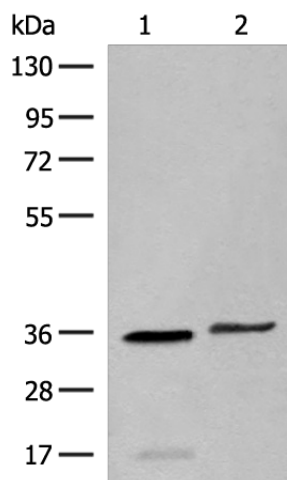
GAL4 (LGALS4) Rabbit Polyclonal Antibody

Product data:

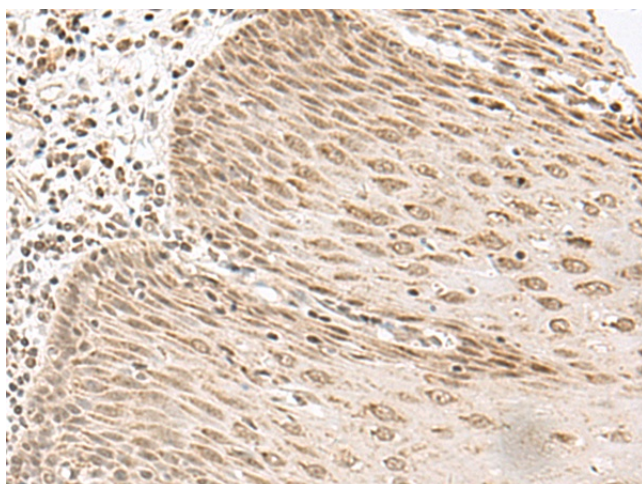
Product Type:	Primary Antibodies
Applications:	IHC, WB
Recommended Dilution:	WB: 500-2000 WB positive control: Human sigmoid tissue and HT-29 cell lysates IHC: 30-150 Positive control: Human esophagus cancer Predicted cell location: Cytoplasm and Nucleus
Reactivity:	Human
Host:	Rabbit
Isotype:	IgG
Clonality:	Polyclonal
Immunogen:	Synthetic peptide of human LGALS4
Formulation:	pH7.4 PBS, 0.05% NaN ₃ , 40% Glycerol
Concentration:	lot specific
Purification:	Antigen affinity purification
Conjugation:	Unconjugated
Storage:	Store at -20°C.
Stability:	1 year
Predicted Protein Size:	36 kDa
Gene Name:	galectin 4
Database Link:	Entrez Gene 3960 Human P56470
Background:	The galectins are a family of beta-galactoside-binding proteins implicated in modulating cell-cell and cell-matrix interactions. The expression of this gene is restricted to small intestine, colon, and rectum, and it is underexpressed in colorectal cancer.
Synonyms:	GAL4; galectin-4; L36LBP



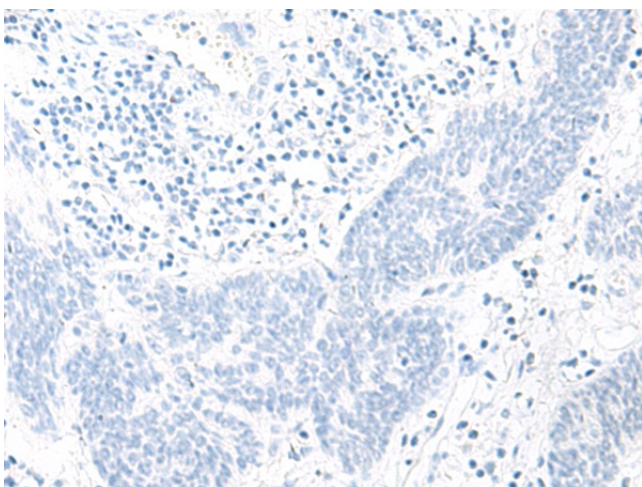
[View online »](#)

Product images:


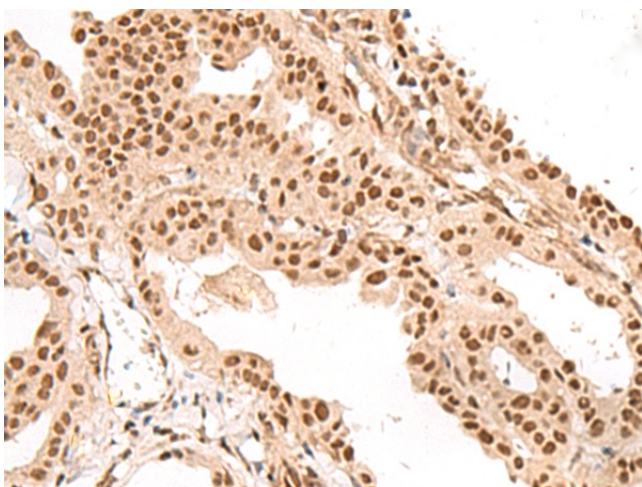
Gel: 8%SDS-PAGE
 Lysate: 40 μ g
 Lane 1-2: Human sigmoid tissue and HT-29 cell lysates
 Primary antibody: TA372595 (LGALS4 Antibody) at dilution 1/400
 Secondary antibody: Goat anti rabbit IgG at 1/8000 dilution
 Exposure time: 2 seconds



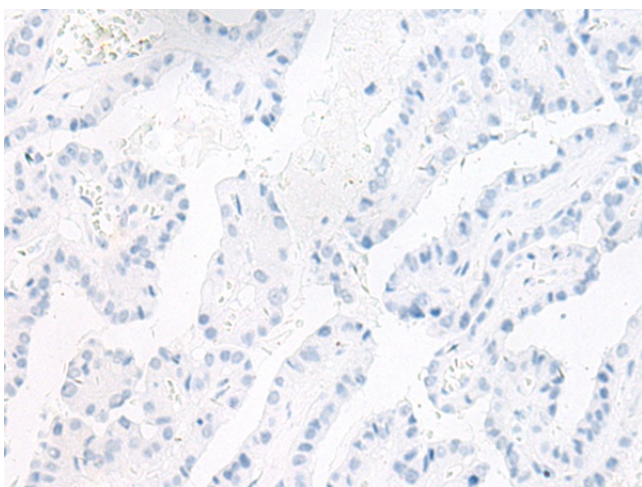
Immunohistochemistry of paraffin-embedded Human esophagus cancer tissue using TA372595 (LGALS4 Antibody) at dilution 1/35 (Original magnification: \times 200)



Immunohistochemistry of paraffin-embedded Human esophagus cancer tissue using TA372595 (LGALS4 Antibody) at dilution 1/35, treated with synthetic peptide. (Original magnification: ×200)



Immunohistochemistry of paraffin-embedded Human thyroid cancer tissue using TA372595 (LGALS4 Antibody) at dilution 1/35 (Original magnification: ×200)



Immunohistochemistry of paraffin-embedded Human thyroid cancer tissue using TA372595 (LGALS4 Antibody) at dilution 1/35, treated with synthetic peptide. (Original magnification: ×200)