

Product datasheet for **TA372592S**

GAB4 Rabbit Polyclonal Antibody

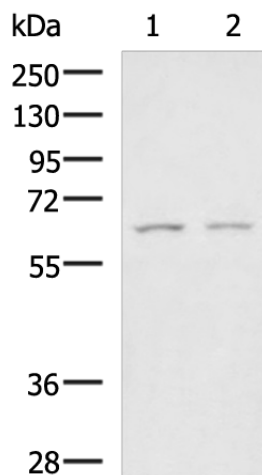
Product data:

| | |
|-------------------------|---|
| Product Type: | Primary Antibodies |
| Applications: | IHC, WB |
| Recommended Dilution: | WB: 200-1000 WB positive control: SKOV3 and LOVO cell lysates IHC: 25-50 Positive control: Human breast cancer Predicted cell location: Cytoplasm |
| Reactivity: | Human |
| Host: | Rabbit |
| Isotype: | IgG |
| Clonality: | Polyclonal |
| Immunogen: | Synthetic peptide of human GAB4 |
| Formulation: | pH7.4 PBS, 0.05% NaN ₃ , 40% Glycerol |
| Concentration: | lot specific |
| Purification: | Antigen affinity purification |
| Conjugation: | Unconjugated |
| Storage: | Store at -20°C. |
| Stability: | 1 year |
| Predicted Protein Size: | 62 kDa |
| Gene Name: | GRB2 associated binding protein family member 4 |
| Database Link: | Entrez Gene 128954 Human Q2WGN9 |
| Background: | The function of this protein remains unknown. |
| Synonyms: | GAB4 |



[View online »](#)

Product images:



Gel: 8%SDS-PAGE

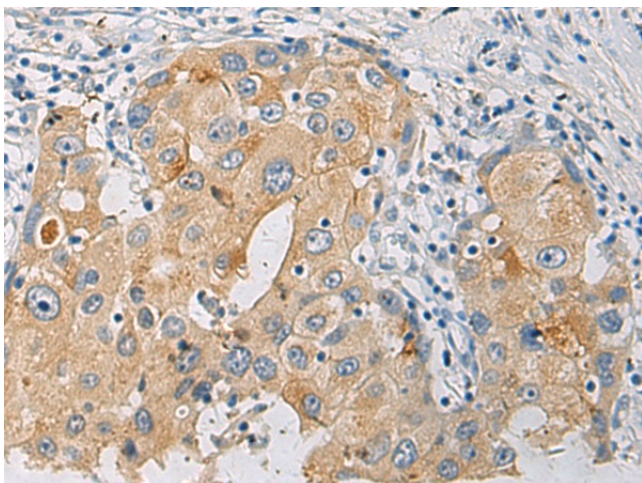
Lysate: 40 μ g

Lane 1-2: SKOV3 and LOVO cell lysates

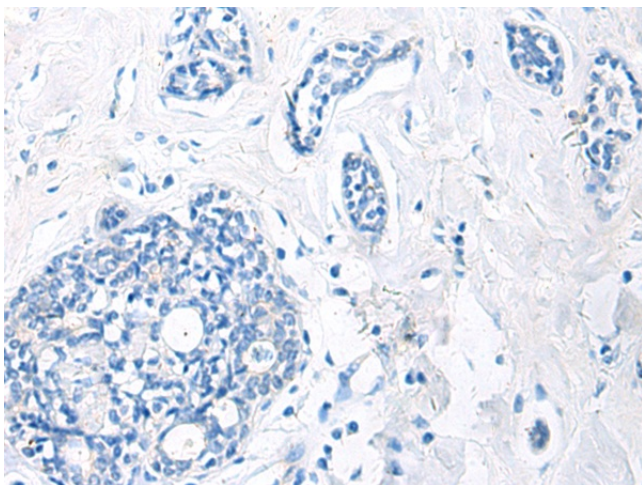
Primary antibody: [TA372592] (GAB4 Antibody) at dilution 1/650

Secondary antibody: Goat anti rabbit IgG at 1/5000 dilution

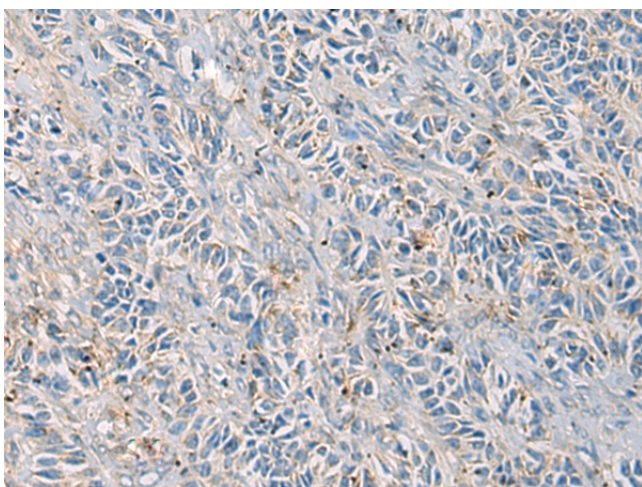
Exposure time: 5 minutes



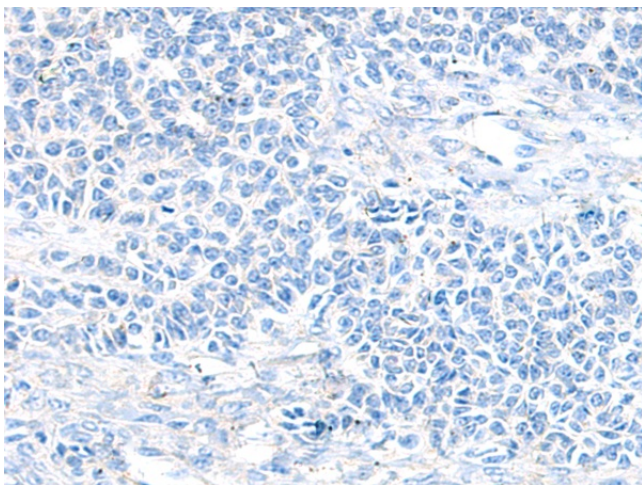
Immunohistochemistry of paraffin-embedded Human breast cancer tissue using [TA372592] (GAB4 Antibody) at dilution 1/25 (Original magnification: $\times 200$)



Immunohistochemistry of paraffin-embedded Human breast cancer tissue using [TA372592] (GAB4 Antibody) at dilution 1/25, treated with synthetic peptide. (Original magnification: ×200)



Immunohistochemistry of paraffin-embedded Human ovarian cancer tissue using [TA372592] (GAB4 Antibody) at dilution 1/25 (Original magnification: ×200)



Immunohistochemistry of paraffin-embedded Human ovarian cancer tissue using [TA372592] (GAB4 Antibody) at dilution 1/25, treated with synthetic peptide. (Original magnification: ×200)