

Product datasheet for **TA372584**

SQSTM1 Rabbit Polyclonal Antibody

Product data:

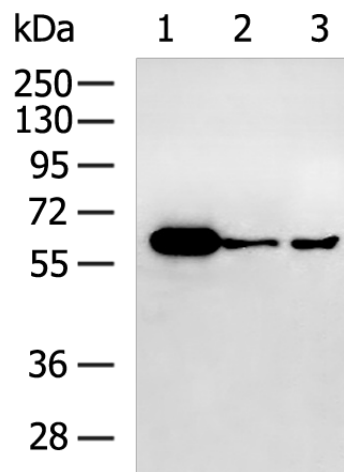
Product Type:	Primary Antibodies
Applications:	IHC, WB
Recommended Dilution:	WB: 500-2000 WB positive control: HepG2, Raji, Hela cell lysates IHC: 50-100 Positive control: Human prostate cancer Predicted cell location: Cytoplasm and Nucleus
Reactivity:	Human
Host:	Rabbit
Isotype:	IgG
Clonality:	Polyclonal
Immunogen:	Synthetic peptide of human SQSTM1
Formulation:	pH7.4 PBS, 0.05% NaN ₃ , 40% Glycerol
Concentration:	lot specific
Purification:	Antigen affinity purification
Conjugation:	Unconjugated
Storage:	Store at -20°C.
Stability:	1 year
Predicted Protein Size:	48 kDa
Gene Name:	sequestosome 1
Database Link:	Entrez Gene 8878 Human Q13501
Background:	This gene encodes a multifunctional protein that binds ubiquitin and regulates activation of the nuclear factor kappa-B (NF-κB) signaling pathway. The protein functions as a scaffolding/adaptor protein in concert with TNF receptor-associated factor 6 to mediate activation of NF-κB in response to upstream signals. Alternatively spliced transcript variants encoding either the same or different isoforms have been identified for this gene. Mutations in this gene result in sporadic and familial Paget disease of bone.



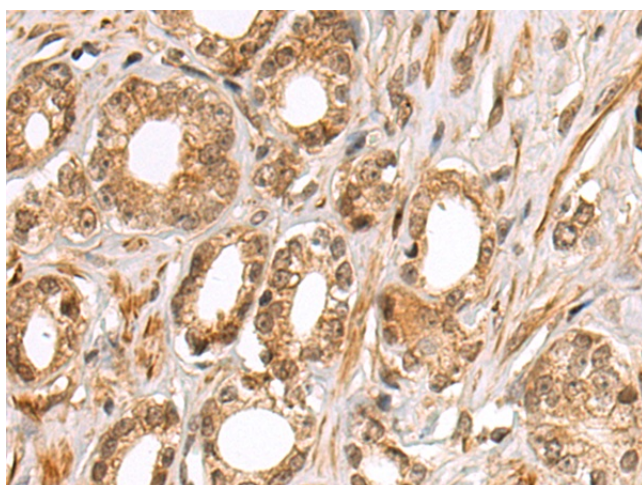
[View online »](#)

Synonyms: A170; EBIAP; ORCA; OSIL; p60; p62; p62B; PDB3; ZIP3

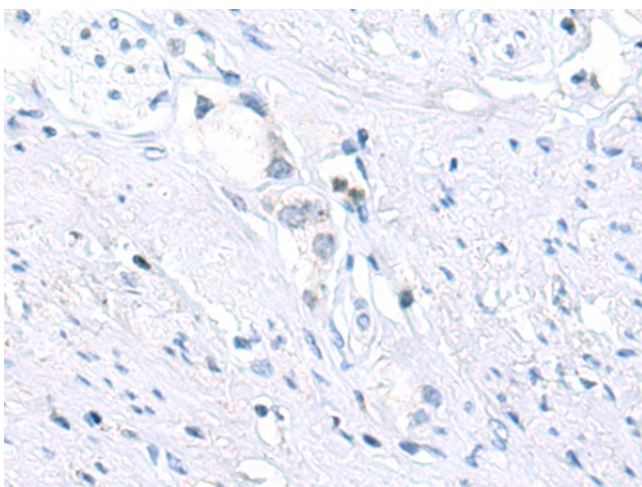
Product images:



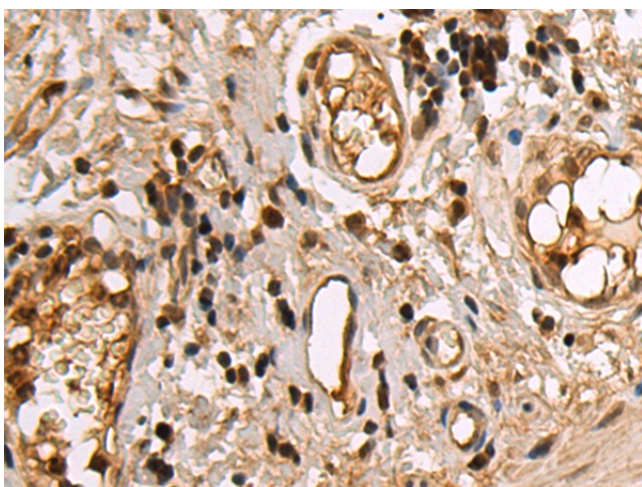
Gel: 8%SDS-PAGE
 Lysate: 40 µg
 Lane 1-3: HepG2
 Raji
 Hela cell lysates
 Primary antibody: TA372584 (SQSTM1 Antibody)
 at dilution 1/600
 Secondary antibody: Goat anti rabbit IgG at
 1/5000 dilution
 Exposure time: 30 seconds



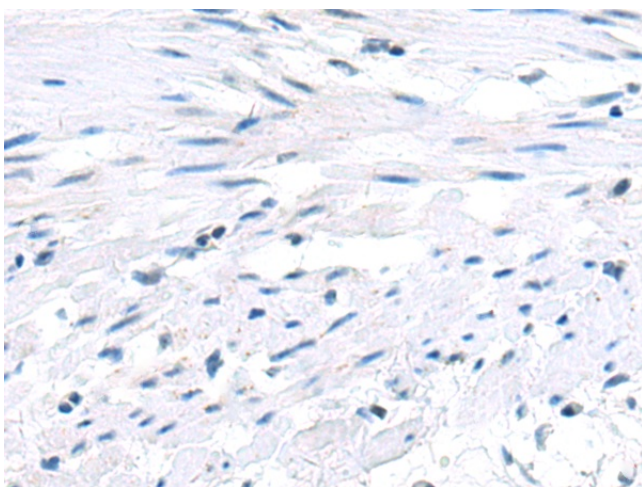
Immunohistochemistry of paraffin-embedded
 Human prostate cancer tissue using TA372584
 (SQSTM1 Antibody) at dilution 1/25 (Original
 magnification: ×200)



Immunohistochemistry of paraffin-embedded Human prostate cancer tissue using TA372584 (SQSTM1 Antibody) at dilution 1/25, treated with synthetic peptide. (Original magnification: ×200)



Immunohistochemistry of paraffin-embedded Human colorectal cancer tissue using TA372584 (SQSTM1 Antibody) at dilution 1/25 (Original magnification: ×200)



Immunohistochemistry of paraffin-embedded Human colorectal cancer tissue using TA372584 (SQSTM1 Antibody) at dilution 1/25, treated with synthetic peptide. (Original magnification: ×200)