

## Product datasheet for **TA372582S**

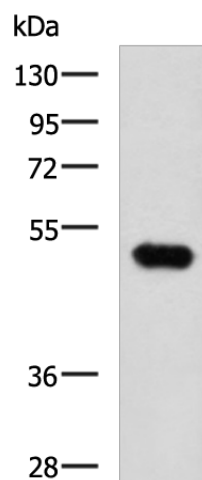
### FOXQ1 Rabbit Polyclonal Antibody

#### Product data:

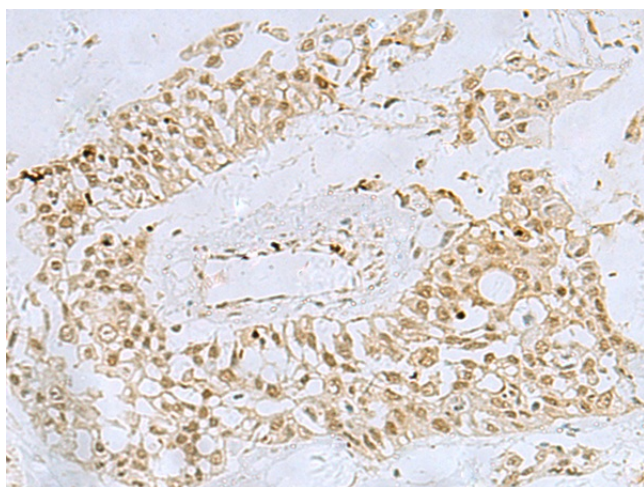
Product Type:	Primary Antibodies
Applications:	IHC, WB
Recommended Dilution:	WB: 500-2000 WB positive control: Mouse kidney tissue lysate IHC: 25-50 Positive control: Human colorectal cancer Predicted cell location: Nucleus
Reactivity:	Human
Host:	Rabbit
Isotype:	IgG
Clonality:	Polyclonal
Immunogen:	Synthetic peptide of human FOXQ1
Formulation:	pH7.4 PBS, 0.05% NaN <sub>3</sub> , 40% Glycerol
Concentration:	lot specific
Purification:	Antigen affinity purification
Conjugation:	Unconjugated
Storage:	Store at -20°C.
Stability:	1 year
Predicted Protein Size:	42 kDa
Gene Name:	forkhead box Q1
Database Link:	<a href="#">Entrez Gene 94234 Human Q9C009</a>
Background:	FOXQ1 is a member of the FOX gene family, which is characterized by a conserved 110-amino acid DNA-binding motif called the forkhead or winged helix domain. FOX genes are involved in embryonic development, cell cycle regulation, tissue-specific gene expression, cell signaling, and tumorigenesis (Bieller et al., 2001 [PubMed 11747606]).
Synonyms:	HFH-1; HFH1



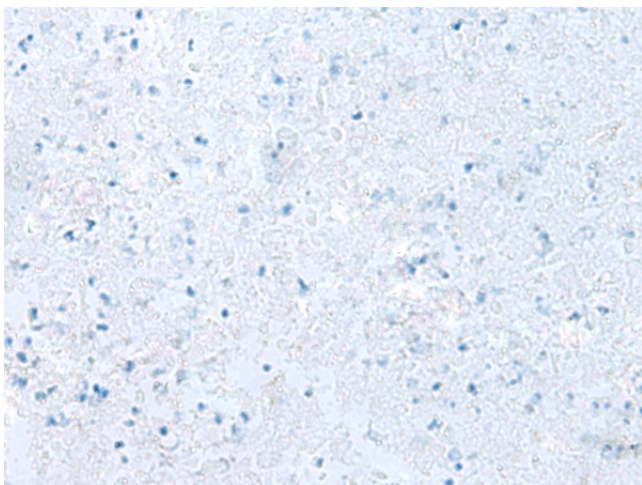
[View online »](#)

**Product images:**

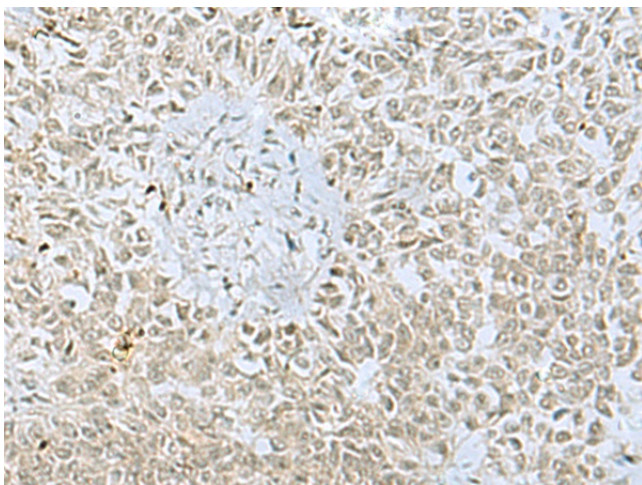
Gel: 8%SDS-PAGE  
Lysate: 40  $\mu$ g  
Lane: Mouse kidney tissue lysate  
Primary antibody: [TA372582] (FOXQ1 Antibody) at dilution 1/750  
Secondary antibody: Goat anti rabbit IgG at 1/5000 dilution  
Exposure time: 5 minutes



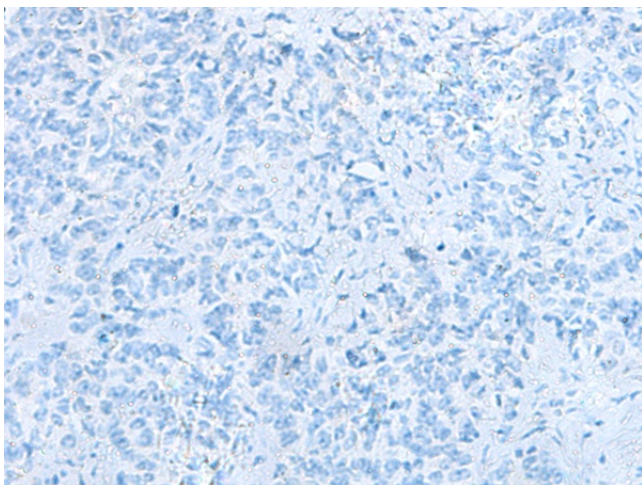
Immunohistochemistry of paraffin-embedded Human colorectal cancer tissue using [TA372582] (FOXQ1 Antibody) at dilution 1/30 (Original magnification:  $\times$ 200)



Immunohistochemistry of paraffin-embedded Human colorectal cancer tissue using [TA372582] (FOXQ1 Antibody) at dilution 1/30, treated with synthetic peptide. (Original magnification:  $\times 200$ )



Immunohistochemistry of paraffin-embedded Human ovarian cancer tissue using [TA372582] (FOXQ1 Antibody) at dilution 1/30 (Original magnification:  $\times 200$ )



Immunohistochemistry of paraffin-embedded Human ovarian cancer tissue using [TA372582] (FOXQ1 Antibody) at dilution 1/30, treated with synthetic peptide. (Original magnification:  $\times 200$ )