

Product datasheet for **TA372580S**

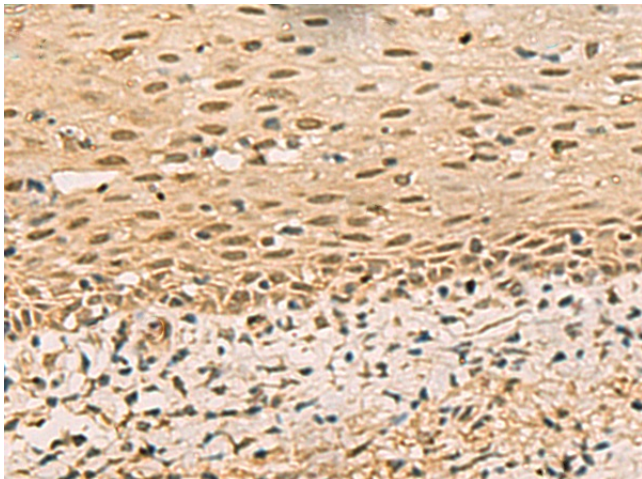
FOXH1 Rabbit Polyclonal Antibody

Product data:

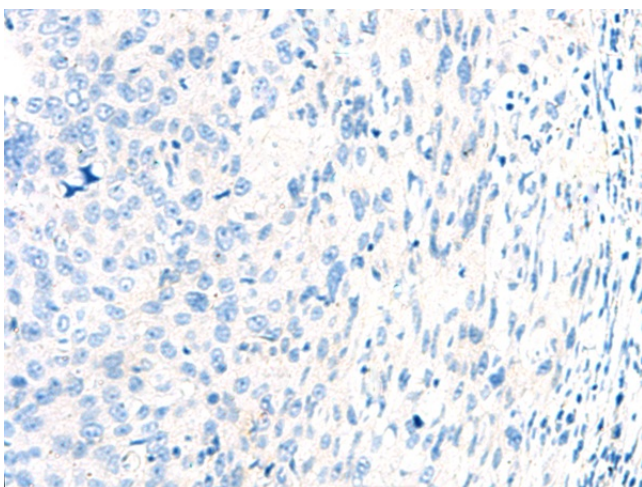
Product Type:	Primary Antibodies
Applications:	IHC
Recommended Dilution:	IHC: 50-100 Positive control: Human cervical cancer Predicted cell location: Nucleus
Reactivity:	Human
Host:	Rabbit
Isotype:	IgG
Clonality:	Polyclonal
Immunogen:	Synthetic peptide of human FOXH1
Formulation:	pH7.4 PBS, 0.05% NaN ₃ , 40% Glycerol
Concentration:	lot specific
Purification:	Antigen affinity purification
Conjugation:	Unconjugated
Storage:	Store at -20°C.
Stability:	1 year
Gene Name:	forkhead box H1
Database Link:	Entrez Gene 8928 Human O75593
Background:	FOXH1 encodes a human homolog of Xenopus forkhead activin signal transducer-1. FOXH1 protein binds SMAD2 and activates an activin response element via binding the DNA motif TGT(G/T)(T/G)ATT.
Synonyms:	FAST-1; Fast-2; FAST1; FAST2; hFAST-1



[View online »](#)

Product images:

Immunohistochemistry of paraffin-embedded Human cervical cancer tissue using [TA372580] (FOXH1 Antibody) at dilution 1/40 (Original magnification: $\times 200$)



Immunohistochemistry of paraffin-embedded Human cervical cancer tissue using [TA372580] (FOXH1 Antibody) at dilution 1/40, treated with synthetic peptide. (Original magnification: $\times 200$)