

Product datasheet for **TA372576S**

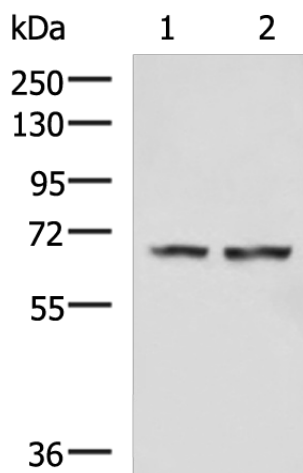
FNBP1L Rabbit Polyclonal Antibody

Product data:

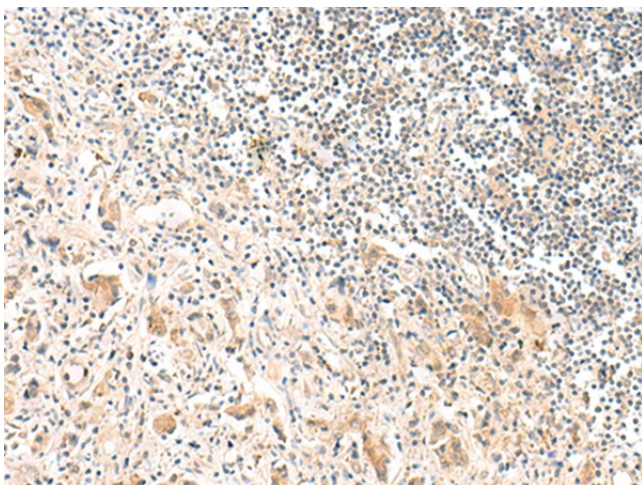
Product Type:	Primary Antibodies
Applications:	IHC, WB
Recommended Dilution:	WB: 500-2000 WB positive control: Human cerebella tissue, Human cerebrum tissue lysates IHC: 20-100 Positive control: Human prostate cancer Predicted cell location: Cytoplasm
Reactivity:	Human, Mouse, Rat
Host:	Rabbit
Isotype:	IgG
Clonality:	Polyclonal
Immunogen:	Synthetic peptide of human FNBP1L
Formulation:	pH7.4 PBS, 0.05% NaN ₃ , 40% Glycerol
Concentration:	lot specific
Purification:	Antigen affinity purification
Conjugation:	Unconjugated
Storage:	Store at -20°C.
Stability:	1 year
Predicted Protein Size:	70 kDa
Gene Name:	formin binding protein 1 like
Database Link:	Entrez Gene 54874 Human Q5T0N5
Background:	The protein encoded by this gene binds to both CDC42 and N-WASP. This protein promotes CDC42-induced actin polymerization by activating the N-WASP-WIP complex and, therefore, is involved in a pathway that links cell surface signals to the actin cytoskeleton. Alternative splicing results in multiple transcript variants encoding different isoforms.
Synonyms:	C1orf39; FLJ20275; Toca-1; TOCA1



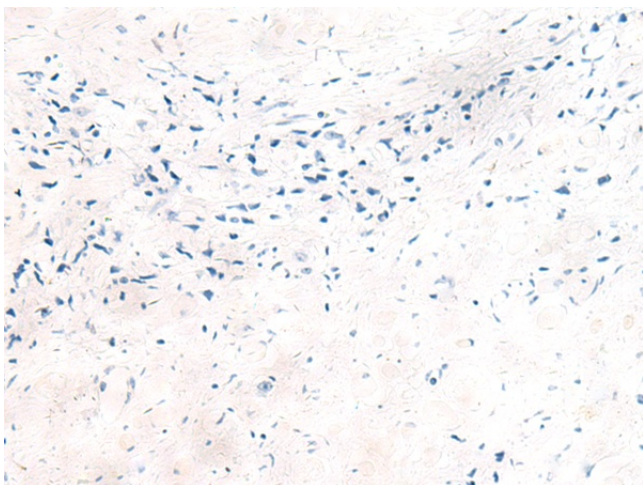
[View online »](#)

Product images:

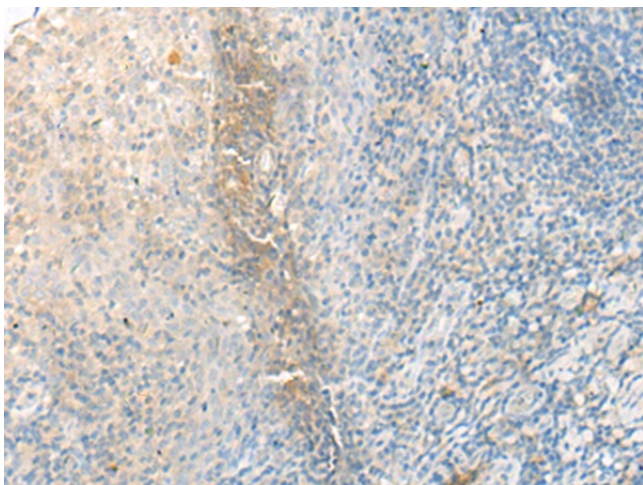
Gel: 8%SDS-PAGE
Lysate: 40 µg
Lane 1-2: Human cerebella tissue
Human cerebrum tissue lysates
Primary antibody: [TA372576] (FNBP1L Antibody)
at dilution 1/750
Secondary antibody: Goat anti rabbit IgG at
1/5000 dilution
Exposure time: 3 minutes



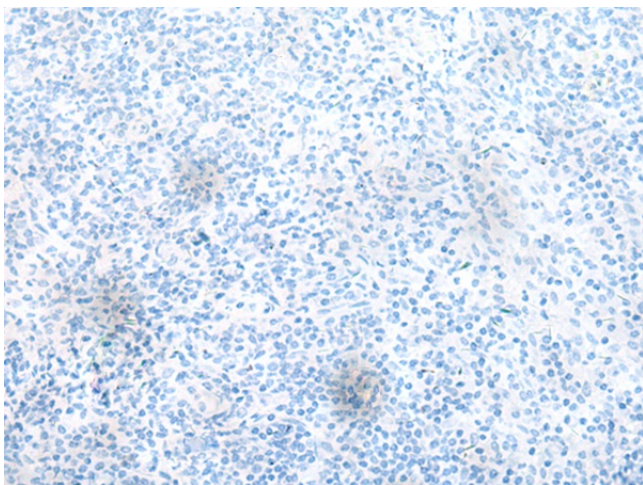
Immunohistochemistry of paraffin-embedded
Human prostate cancer tissue using [TA372576]
(FNBP1L Antibody) at dilution 1/30 (Original
magnification: x200)



Immunohistochemistry of paraffin-embedded Human prostate cancer tissue using [TA372576] (FNBP1L Antibody) at dilution 1/30, treated with synthetic peptide. (Original magnification: $\times 200$)



Immunohistochemistry of paraffin-embedded Human tonsil tissue using [TA372576] (FNBP1L Antibody) at dilution 1/30 (Original magnification: $\times 200$)



Immunohistochemistry of paraffin-embedded Human tonsil tissue using [TA372576] (FNBP1L Antibody) at dilution 1/30, treated with synthetic peptide. (Original magnification: $\times 200$)