

Product datasheet for **TA372575**

Filamin C (FLNC) Rabbit Polyclonal Antibody

Product data:

| | |
|-------------------------|---|
| Product Type: | Primary Antibodies |
| Applications: | IHC, WB |
| Recommended Dilution: | WB: 500-2000 WB positive control: A172 and NIH/3T3 cell lysates IHC: 40-200 Positive control: Human ovarian cancer Predicted cell location: Cytoplasm and Cell membrane |
| Reactivity: | Human, Mouse, Rat |
| Host: | Rabbit |
| Isotype: | IgG |
| Clonality: | Polyclonal |
| Immunogen: | Synthetic peptide of human FLNC |
| Formulation: | pH7.4 PBS, 0.05% NaN ₃ , 40% Glycerol |
| Concentration: | lot specific |
| Purification: | Antigen affinity purification |
| Conjugation: | Unconjugated |
| Storage: | Store at -20°C. |
| Stability: | 1 year |
| Predicted Protein Size: | 291 kDa |
| Gene Name: | filamin C |
| Database Link: | Entrez Gene 2318 Human Q14315 |

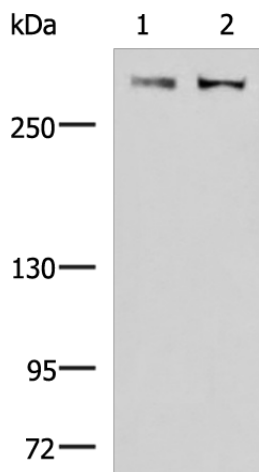
Background: This gene encodes one of three related filamin genes, specifically gamma filamin. These filamin proteins crosslink actin filaments into orthogonal networks in cortical cytoplasm and participate in the anchoring of membrane proteins for the actin cytoskeleton. Three functional domains exist in filamin: an N-terminal filamentous actin-binding domain, a C-terminal self-association domain, and a membrane glycoprotein-binding domain. Two transcript variants encoding different isoforms have been found for this gene.



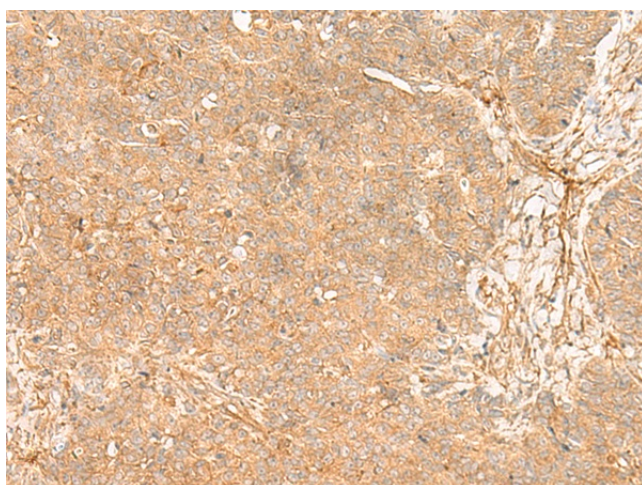
[View online »](#)

Synonyms: ABP-280; ABP-L; ABP280A; ABPA; ABPL; Filamin-2; FLJ10186; FLN2; Gamma-filamin

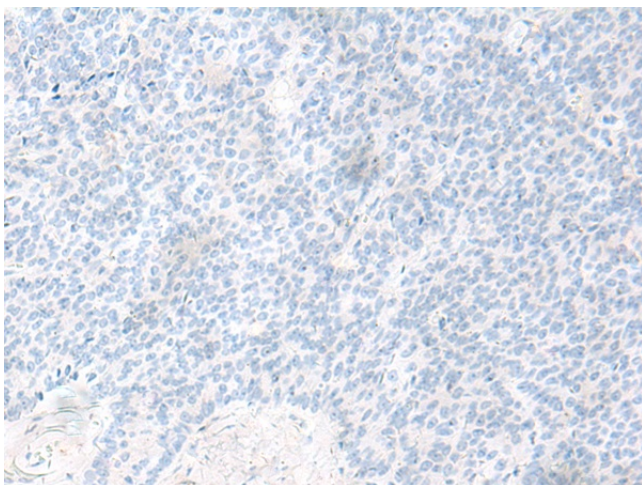
Product images:



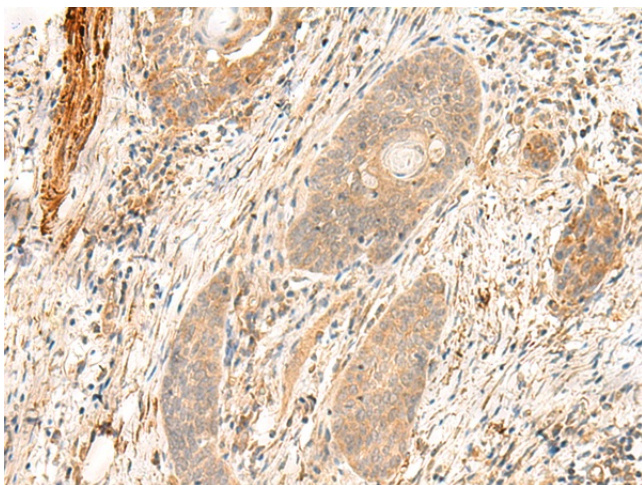
Gel: 6%SDS-PAGE
 Lysate: 40 µg
 Lane 1-2: A172 and NIH/3T3 cell lysates
 Primary antibody: TA372575 (FLNC Antibody) at dilution 1/800
 Secondary antibody: Goat anti rabbit IgG at 1/5000 dilution
 Exposure time: 2 minutes



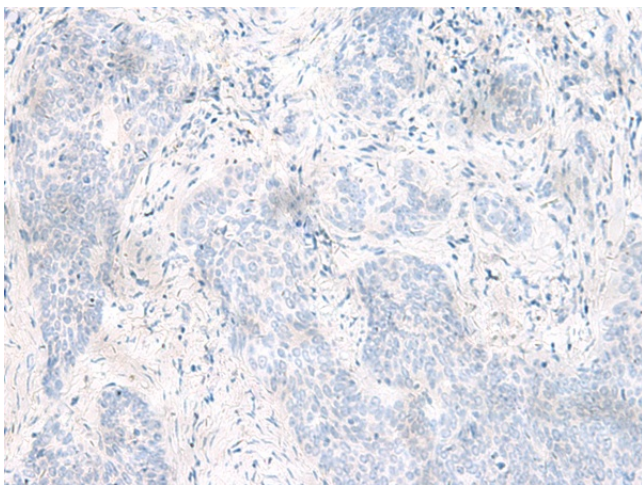
Immunohistochemistry of paraffin-embedded Human ovarian cancer tissue using TA372575 (FLNC Antibody) at dilution 1/35 (Original magnification: ×200)



Immunohistochemistry of paraffin-embedded Human ovarian cancer tissue using TA372575 (FLNC Antibody) at dilution 1/35, treated with synthetic peptide. (Original magnification: $\times 200$)



Immunohistochemistry of paraffin-embedded Human esophagus cancer tissue using TA372575 (FLNC Antibody) at dilution 1/35 (Original magnification: $\times 200$)



Immunohistochemistry of paraffin-embedded Human esophagus cancer tissue using TA372575 (FLNC Antibody) at dilution 1/35, treated with synthetic peptide. (Original magnification: $\times 200$)