

Product datasheet for **TA372571**

FKBP51 (FKBP5) Rabbit Polyclonal Antibody

Product data:

Product Type:	Primary Antibodies
Applications:	IHC, WB
Recommended Dilution:	WB: 500-2000 WB positive control: PC3, K562, HepG2, Hela, A172 cell lysates IHC: 50-300 Positive control: Human esophagus cancer Predicted cell location: Nucleus
Reactivity:	Human
Host:	Rabbit
Isotype:	IgG
Clonality:	Polyclonal
Immunogen:	Synthetic peptide of human FKBP5
Formulation:	pH7.4 PBS, 0.05% NaN ₃ , 40% Glycerol
Concentration:	lot specific
Purification:	Antigen affinity purification
Conjugation:	Unconjugated
Storage:	Store at -20°C.
Stability:	1 year
Predicted Protein Size:	51 kDa
Gene Name:	FK506 binding protein 5
Database Link:	Entrez Gene 2289 Human Q13451



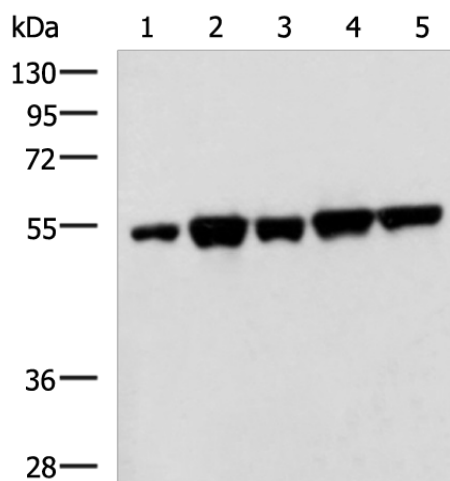
[View online »](#)

Background:

The protein encoded by this gene is a member of the immunophilin protein family, which play a role in immunoregulation and basic cellular processes involving protein folding and trafficking. This encoded protein is a cis-trans prolyl isomerase that binds to the immunosuppressants FK506 and rapamycin. It is thought to mediate calcineurin inhibition. It also interacts functionally with mature hetero-oligomeric progesterone receptor complexes along with the 90 kDa heat shock protein and P23 protein. This gene has been found to have multiple polyadenylation sites. Alternative splicing results in multiple transcript variants.

Synonyms:

AIG6; FKBP-51; FKBP51; FKBP54; MGC111006; OTTHUMP00000016268; P54; PPlase; Ptg-10; rotamase

Product images:


Gel: 8%SDS-PAGE

Lysate: 40 µg

Lane 1-5: PC3

K562

HepG2

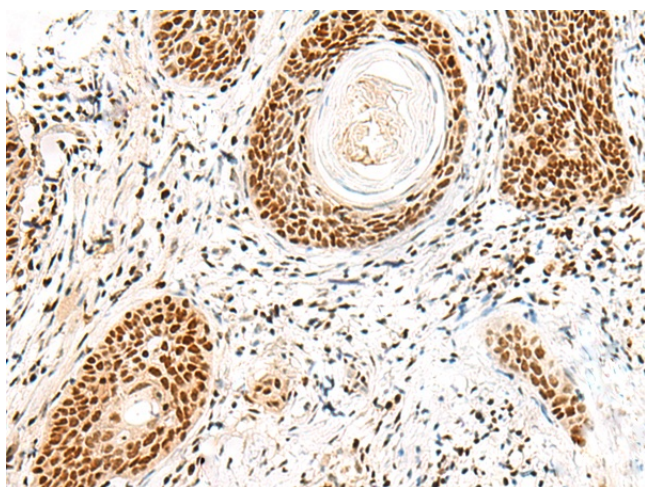
HeLa

A172 cell lysates

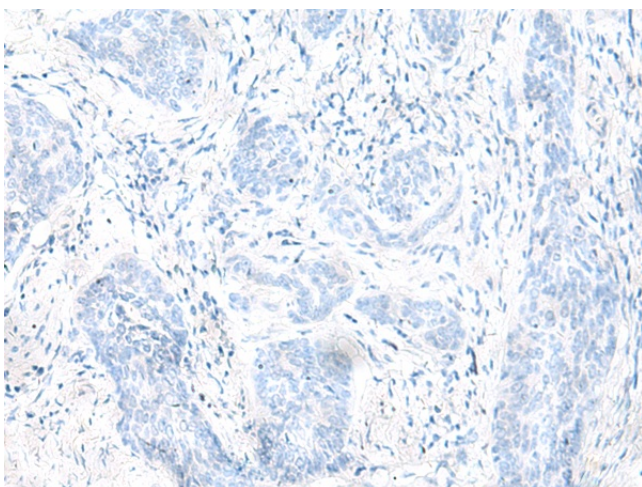
Primary antibody: TA372571 (FKBP5 Antibody) at dilution 1/600

Secondary antibody: Goat anti rabbit IgG at 1/5000 dilution

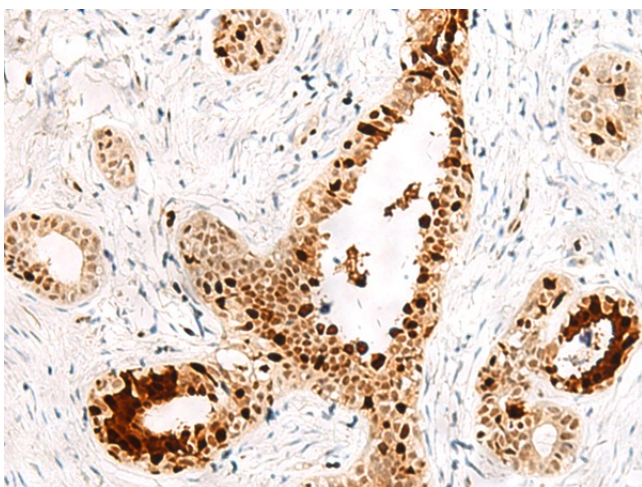
Exposure time: 30 seconds



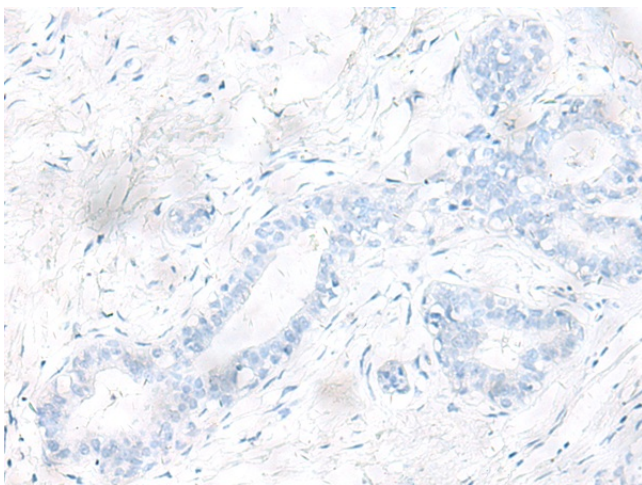
Immunohistochemistry of paraffin-embedded Human esophagus cancer tissue using TA372571 (FKBP5 Antibody) at dilution 1/50 (Original magnification: ×200)



Immunohistochemistry of paraffin-embedded Human esophagus cancer tissue using TA372571 (FKBP5 Antibody) at dilution 1/50, treated with synthetic peptide. (Original magnification: ×200)



Immunohistochemistry of paraffin-embedded Human breast cancer tissue using TA372571 (FKBP5 Antibody) at dilution 1/50 (Original magnification: ×200)



Immunohistochemistry of paraffin-embedded Human breast cancer tissue using TA372571 (FKBP5 Antibody) at dilution 1/50, treated with synthetic peptide. (Original magnification: ×200)