

Product datasheet for **TA372563S**

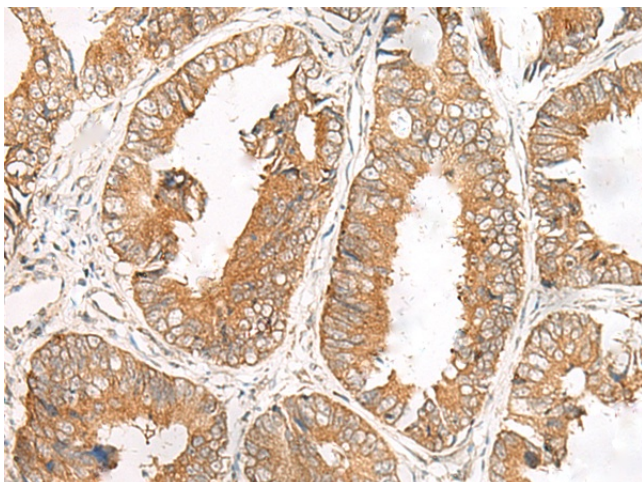
FERD3L Rabbit Polyclonal Antibody

Product data:

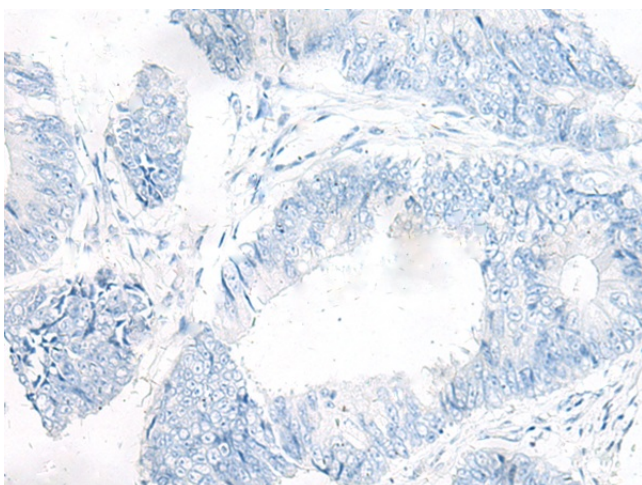
Product Type:	Primary Antibodies
Applications:	IHC
Recommended Dilution:	IHC: 50-300 Positive control: Human colorectal cancer Predicted cell location: Cytoplasm or Nucleus
Reactivity:	Human
Host:	Rabbit
Isotype:	IgG
Clonality:	Polyclonal
Immunogen:	Synthetic peptide of human FERD3L
Formulation:	pH7.4 PBS, 0.05% NaN ₃ , 40% Glycerol
Concentration:	lot specific
Purification:	Antigen affinity purification
Conjugation:	Unconjugated
Storage:	Store at -20°C.
Stability:	1 year
Gene Name:	Fer3-like bHLH transcription factor
Database Link:	Entrez Gene 222894 Human Q96RJ6
Background:	Transcription factor that binds to the E-box and functions as inhibitor of transcription. DNA binding requires dimerization with an E protein. Inhibits transcription activation by ASCL1/MASH1 by sequestering E proteins (By similarity).
Synonyms:	bHLHa31; MGC119861; N-TWIST; NATO3; NTWIST



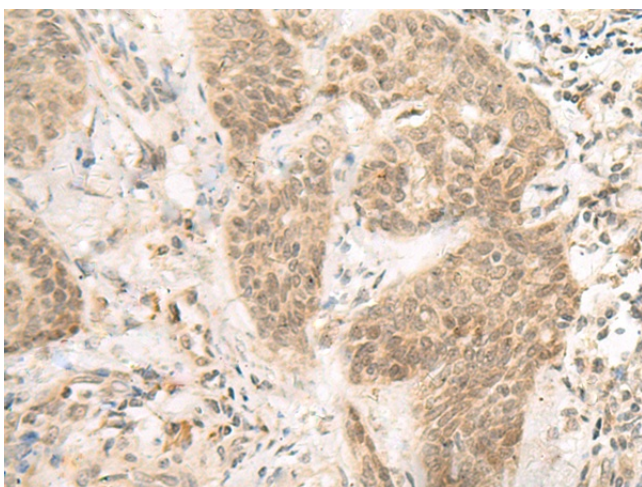
[View online »](#)

Product images:


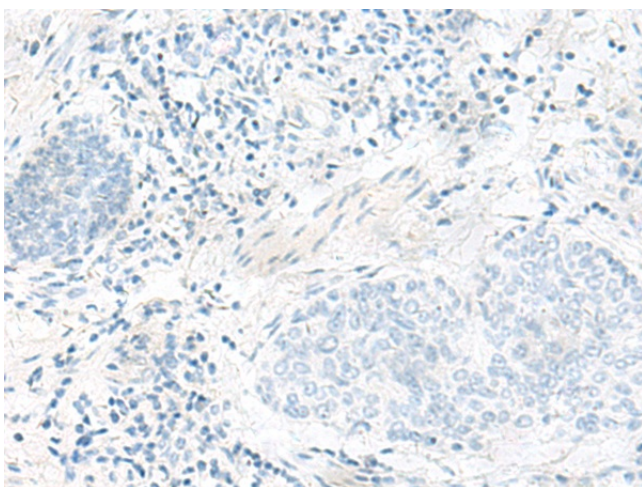
Immunohistochemistry of paraffin-embedded Human colorectal cancer tissue using [TA372563] (FERD3L Antibody) at dilution 1/85 (Original magnification: ×200)



Immunohistochemistry of paraffin-embedded Human colorectal cancer tissue using [TA372563] (FERD3L Antibody) at dilution 1/85, treated with synthetic peptide. (Original magnification: ×200)



Immunohistochemistry of paraffin-embedded Human esophagus cancer tissue using [TA372563] (FERD3L Antibody) at dilution 1/85 (Original magnification: $\times 200$)



Immunohistochemistry of paraffin-embedded Human esophagus cancer tissue using [TA372563] (FERD3L Antibody) at dilution 1/85, treated with synthetic peptide. (Original magnification: $\times 200$)