

## Product datasheet for **TA372562**

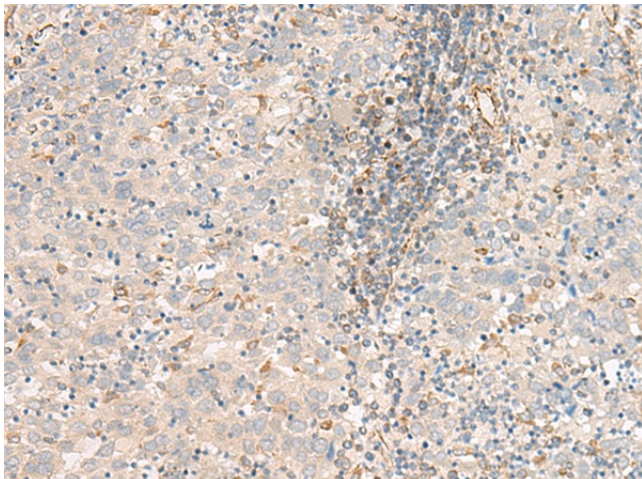
### FER Rabbit Polyclonal Antibody

#### Product data:

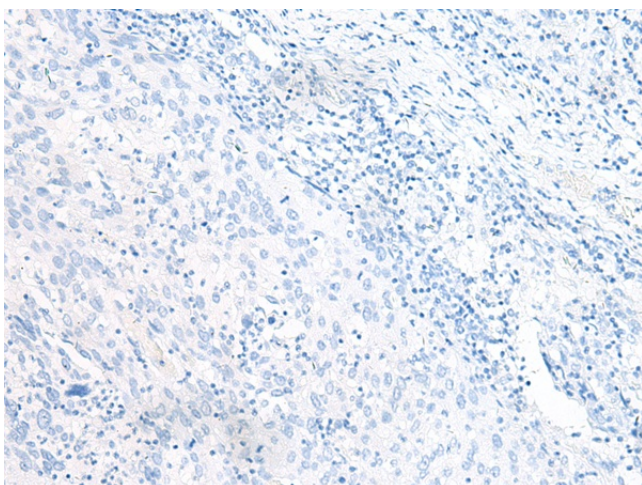
|                       |  |
|-----------------------|--|
| Product Type:         | Primary Antibodies   |
| Applications:         | IHC  |
| Recommended Dilution: | IHC: 50-300<br>Positive control: Human cervical cancer<br>Predicted cell location: Cytoplasm or Nucleus  |
| Reactivity:           | Human, Mouse, Rat  |
| Host:                 | Rabbit   |
| Isotype:              | IgG  |
| Clonality:            | Polyclonal   |
| Immunogen:            | Synthetic peptide of human FER   |
| Formulation:          | pH7.4 PBS, 0.05% NaN <sub>3</sub> , 40% Glycerol   |
| Concentration:        | lot specific   |
| Purification:         | Antigen affinity purification  |
| Conjugation:          | Unconjugated   |
| Storage:              | Store at -20°C.  |
| Stability:            | 1 year   |
| Gene Name:            | FER tyrosine kinase  |
| Database Link:        | <a href="#">Entrez Gene 2241 Human P16591</a>  |
| Background:           | The protein encoded by this gene is a member of the FPS/FES family of non-transmembrane receptor tyrosine kinases. It regulates cell-cell adhesion and mediates signaling from the cell surface to the cytoskeleton via growth factor receptors. Alternative splicing results in multiple transcript variants. A related pseudogene has been identified on chromosome X. |
| Synonyms:             | c-FER; p94-FER; TYK3   |



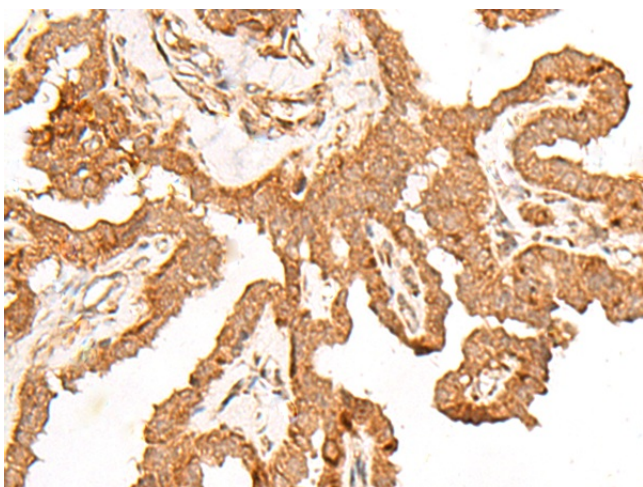
[View online »](#)

**Product images:**

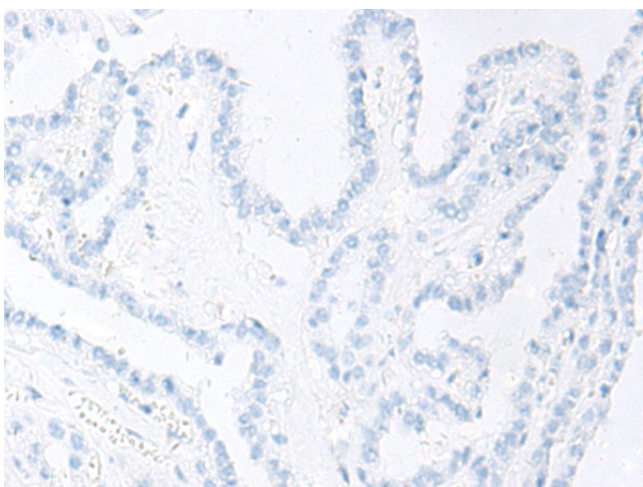
Immunohistochemistry of paraffin-embedded Human cervical cancer tissue using TA372562 (FER Antibody) at dilution 1/80 (Original magnification:  $\times 200$ )



Immunohistochemistry of paraffin-embedded Human cervical cancer tissue using TA372562 (FER Antibody) at dilution 1/80, treated with synthetic peptide. (Original magnification:  $\times 200$ )



Immunohistochemistry of paraffin-embedded Human thyroid cancer tissue using TA372562 (FER Antibody) at dilution 1/80 (Original magnification:  $\times 200$ )



Immunohistochemistry of paraffin-embedded Human thyroid cancer tissue using TA372562 (FER Antibody) at dilution 1/80, treated with synthetic peptide. (Original magnification:  $\times 200$ )