

## Product datasheet for **TA372561**

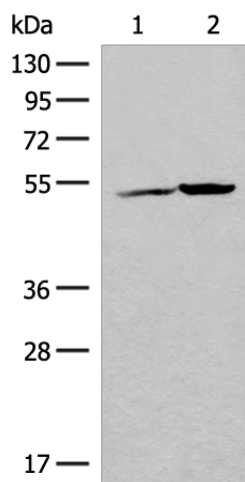
### FECH Rabbit Polyclonal Antibody

#### Product data:

Product Type:	Primary Antibodies
Applications:	IHC, WB
Recommended Dilution:	WB: 500-2000 WB positive control: K562 cell and Human heart tissue lysates IHC: 50-300 Positive control: Human cervical cancer Predicted cell location: Cytoplasm
Reactivity:	Human, Mouse
Host:	Rabbit
Isotype:	IgG
Clonality:	Polyclonal
Immunogen:	Synthetic peptide of human FECH
Formulation:	pH7.4 PBS, 0.05% NaN <sub>3</sub> , 40% Glycerol
Concentration:	lot specific
Purification:	Antigen affinity purification
Conjugation:	Unconjugated
Storage:	Store at -20°C.
Stability:	1 year
Predicted Protein Size:	48 kDa
Gene Name:	ferrochelatase
Database Link:	<a href="#">Entrez Gene 2235 Human P22830</a>
Background:	The protein encoded by this gene is localized to the mitochondrion, where it catalyzes the insertion of the ferrous form of iron into protoporphyrin IX in the heme synthesis pathway. Mutations in this gene are associated with erythropoietic protoporphyria. Two transcript variants encoding different isoforms have been found for this gene. A pseudogene of this gene is found on chromosome 3.
Synonyms:	EPP; FCE; ferrochelatase



[View online »](#)

**Product images:**

Gel: 8%SDS-PAGE

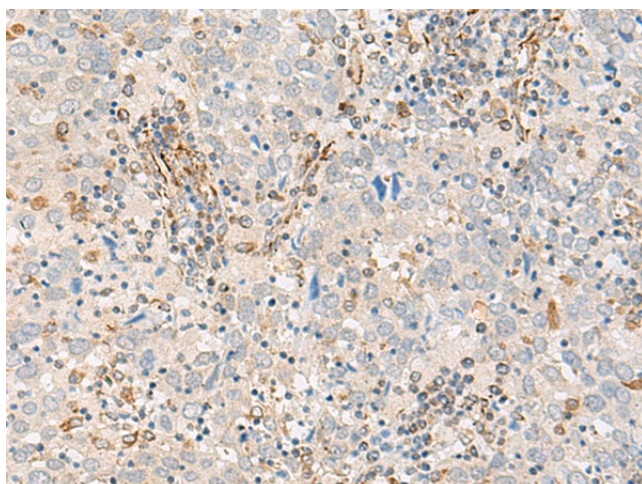
Lysate: 40  $\mu$ g

Lane 1-2: K562 cell and Human heart tissue lysates

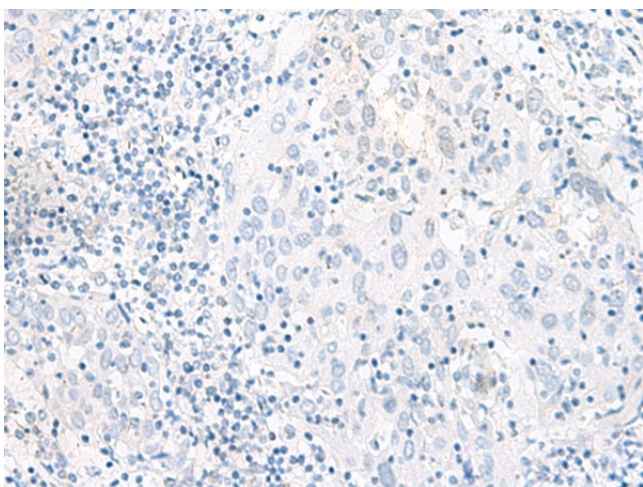
Primary antibody: TA372561 (FECH Antibody) at dilution 1/500

Secondary antibody: Goat anti rabbit IgG at 1/8000 dilution

Exposure time: 20 seconds



Immunohistochemistry of paraffin-embedded Human cervical cancer tissue using TA372561 (FECH Antibody) at dilution 1/55 (Original magnification:  $\times$ 200)



Immunohistochemistry of paraffin-embedded Human cervical cancer tissue using TA372561 (FECH Antibody) at dilution 1/55, treated with synthetic peptide. (Original magnification:  $\times 200$ )