

## Product datasheet for **TA372559S**

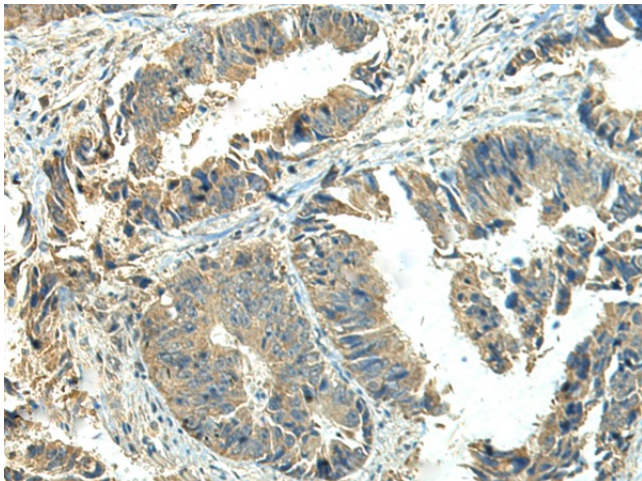
### NPVF Rabbit Polyclonal Antibody

#### Product data:

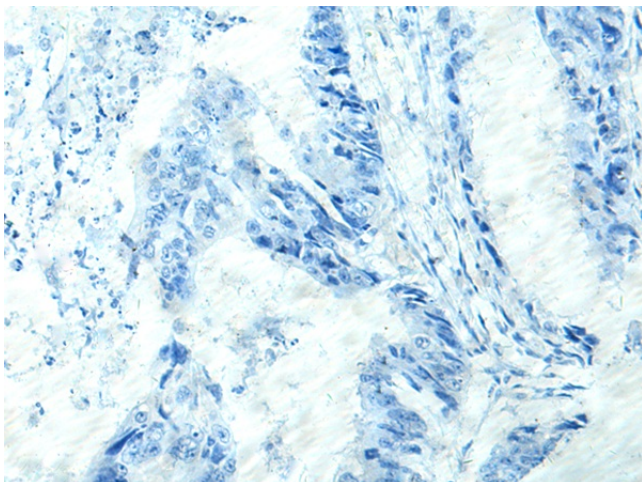
Product Type:	Primary Antibodies
Applications:	IHC
Recommended Dilution:	IHC: 50-300 Positive control: Human colorectal cancer Predicted cell location: Cytoplasm
Reactivity:	Human
Host:	Rabbit
Isotype:	IgG
Clonality:	Polyclonal
Immunogen:	Synthetic peptide of human NPVF
Formulation:	pH7.4 PBS, 0.05% NaN <sub>3</sub> , 40% Glycerol
Concentration:	lot specific
Purification:	Antigen affinity purification
Conjugation:	Unconjugated
Storage:	Store at -20°C.
Stability:	1 year
Gene Name:	neuropeptide VF precursor
Database Link:	<a href="#">Entrez Gene 64111 Human Q9HCQ7</a>
Background:	Neuropeptide RFRP-1 acts as a potent negative regulator of gonadotropin synthesis and secretion. Neuropeptides NPSF and NPVF efficiently inhibit forskolin-induced production of cAMP, but RFRP-2 shows no inhibitory activity. Neuropeptide RFRP-1 induces secretion of prolactin in rats. Neuropeptide NPVF blocks morphine-induced analgesia.
Synonyms:	C7orf9; RFRP



[View online »](#)

**Product images:**

Immunohistochemistry of paraffin-embedded Human colorectal cancer tissue using [TA372559] (NPVF Antibody) at dilution 1/65 (Original magnification:  $\times 200$ )



Immunohistochemistry of paraffin-embedded Human colorectal cancer tissue using [TA372559] (NPVF Antibody) at dilution 1/65, treated with synthetic peptide. (Original magnification:  $\times 200$ )