

Product datasheet for **TA372552**

FBXL16 Rabbit Polyclonal Antibody

Product data:

Product Type: Primary Antibodies
Applications: IHC
Recommended Dilution: IHC: 25-100
Positive control: Human esophagus cancer
Predicted cell location: Cytoplasm

Reactivity: Human, Mouse, Rat

Host: Rabbit

Isotype: IgG

Clonality: Polyclonal

Immunogen: Synthetic peptide of human FBXL16

Formulation: pH7.4 PBS, 0.05% NaN₃, 40% Glycerol

Concentration: lot specific

Purification: Antigen affinity purification

Conjugation: Unconjugated

Storage: Store at -20°C.

Stability: 1 year

Gene Name: F-box and leucine-rich repeat protein 16

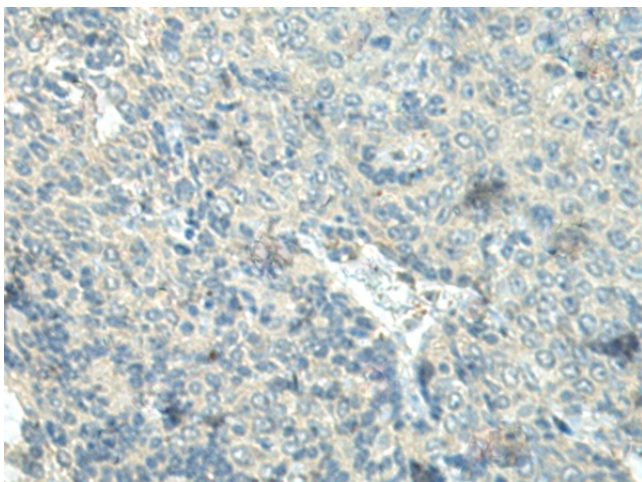
Database Link: [Entrez Gene 146330 Human](#)
[Q8N461](#)

Background: Members of the F-box protein family, such as FBXL16, are characterized by an approximately 40-amino acid F-box motif. SCF complexes, formed by SKP1 (MIM 601434), cullin (see CUL1; MIM 603134), and F-box proteins, act as protein-ubiquitin ligases. F-box proteins interact with SKP1 through the F box, and they interact with ubiquitination targets through other protein interaction domains (Jin et al., 2004 [PubMed 15520277]).

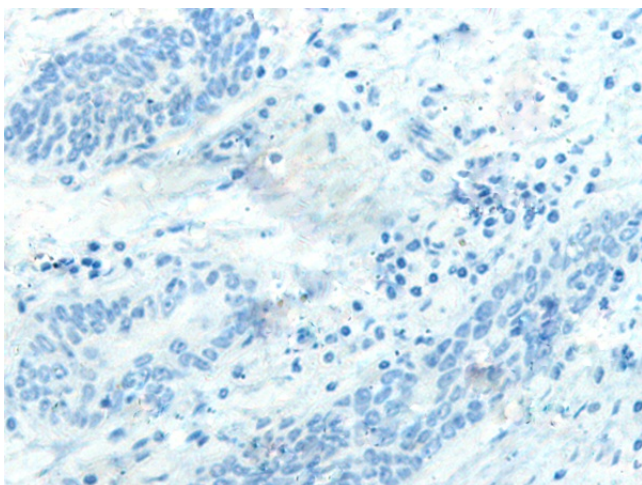
Synonyms: C16orf22; c380A1.1; Fbl16; FLJ33735; MGC33974; OTTHUMP00000115487



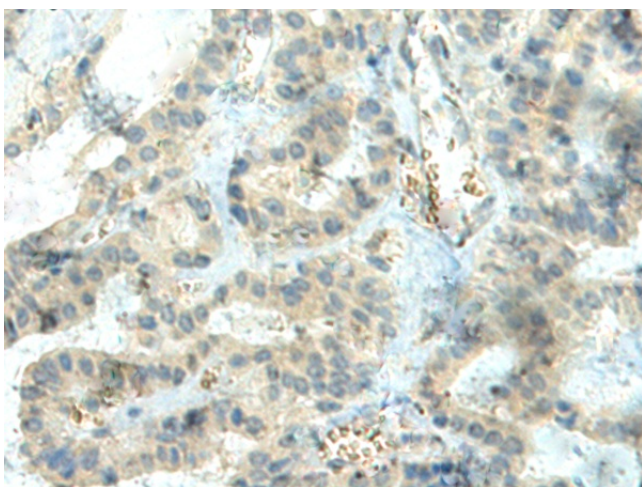
[View online »](#)

Product images:


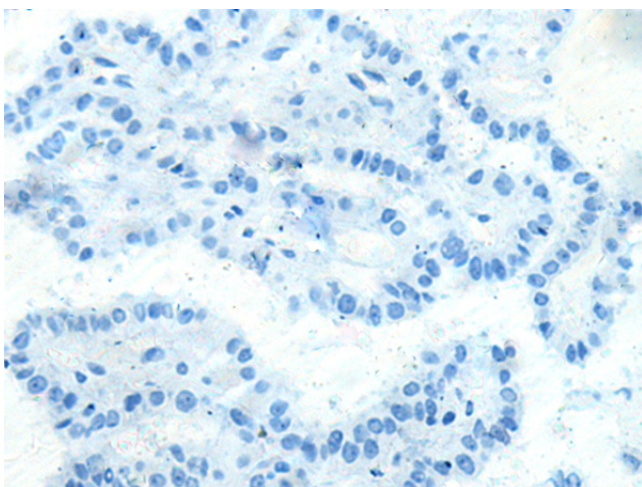
Immunohistochemistry of paraffin-embedded Human esophagus cancer tissue using TA372552 (FBXL16 Antibody) at dilution 1/25 (Original magnification: $\times 200$)



Immunohistochemistry of paraffin-embedded Human esophagus cancer tissue using TA372552 (FBXL16 Antibody) at dilution 1/25, treated with synthetic peptide. (Original magnification: $\times 200$)



Immunohistochemistry of paraffin-embedded Human thyroid cancer tissue using TA372552 (FBXL16 Antibody) at dilution 1/25 (Original magnification: ×200)



Immunohistochemistry of paraffin-embedded Human thyroid cancer tissue using TA372552 (FBXL16 Antibody) at dilution 1/25, treated with synthetic peptide. (Original magnification: ×200)