

## Product datasheet for **TA372549**

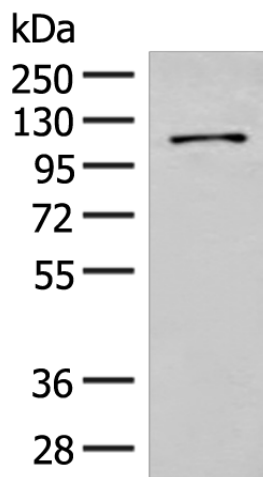
### FANCB Rabbit Polyclonal Antibody

#### Product data:

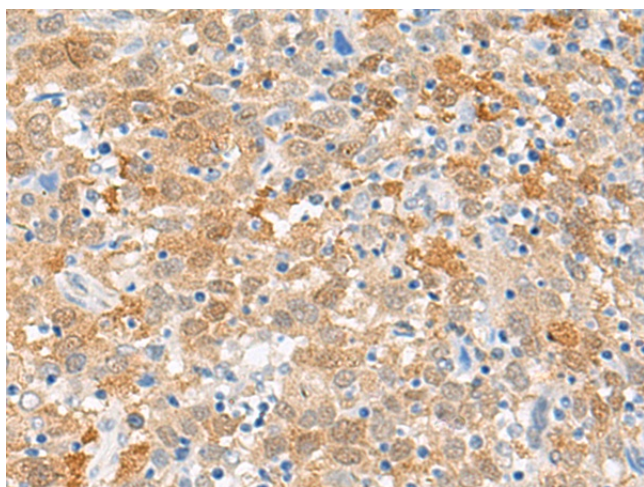
|                         |  |
|-------------------------|--|
| Product Type:           | Primary Antibodies   |
| Applications:           | IHC, WB  |
| Recommended Dilution:   | WB: 500-2000<br>WB positive control: Hela cell lysate<br>IHC: 40-200<br>Positive control: Human cervical cancer<br>Predicted cell location: Nucleus  |
| Reactivity:             | Human  |
| Host:                   | Rabbit   |
| Isotype:                | IgG  |
| Clonality:              | Polyclonal   |
| Immunogen:              | Synthetic peptide of human FANCB   |
| Formulation:            | pH7.4 PBS, 0.05% NaN <sub>3</sub> , 40% Glycerol   |
| Concentration:          | lot specific   |
| Purification:           | Antigen affinity purification  |
| Conjugation:            | Unconjugated   |
| Storage:                | Store at -20°C.  |
| Stability:              | 1 year   |
| Predicted Protein Size: | 98 kDa   |
| Gene Name:              | Fanconi anemia complementation group B   |
| Database Link:          | <a href="#">Entrez Gene 2187 Human Q8NB91</a>  |
| Background:             | This gene encodes a member of the Fanconi anemia complementation group B. This protein is assembled into a nucleoprotein complex that is involved in the repair of DNA lesions. Mutations in this gene can cause chromosome instability and VACTERL syndrome with hydrocephalus. |
| Synonyms:               | FA2; FAAP90; FAAP95; FAB; FACB; FLJ34064   |



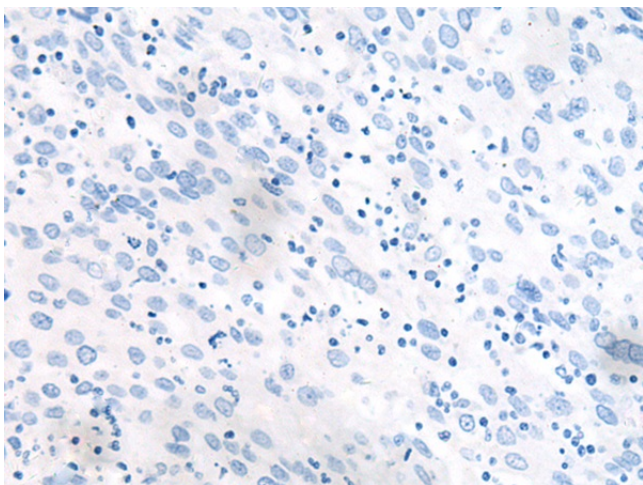
[View online »](#)

**Product images:**

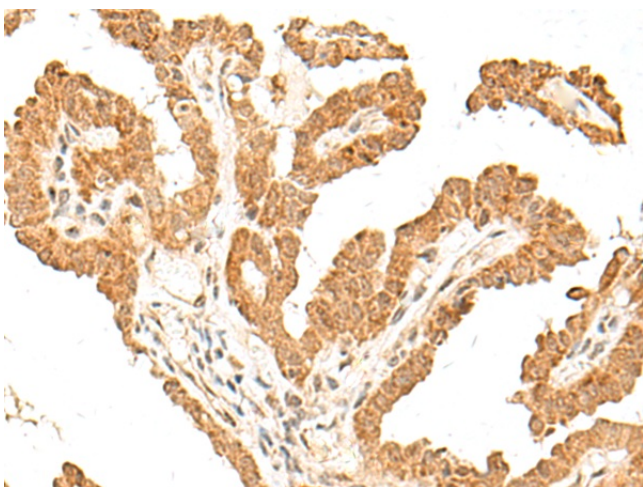
Gel: 8%SDS-PAGE  
Lysate: 40  $\mu$ g  
Lane: HeLa cell lysate  
Primary antibody: TA372549 (FANCB Antibody) at dilution 1/550  
Secondary antibody: Goat anti rabbit IgG at 1/8000 dilution  
Exposure time: 3 minutes



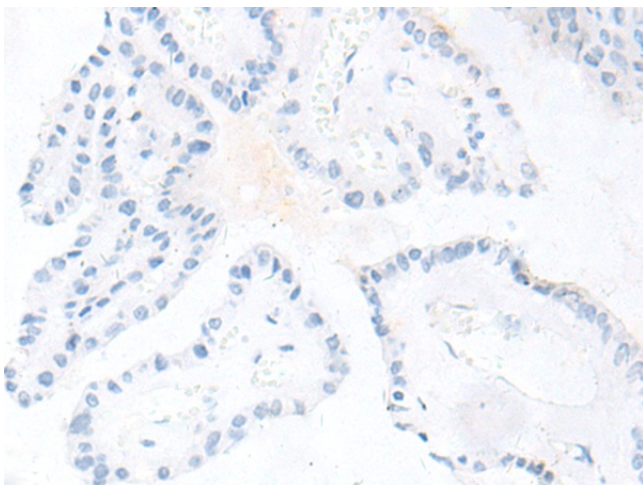
Immunohistochemistry of paraffin-embedded Human cervical cancer tissue using TA372549 (FANCB Antibody) at dilution 1/60 (Original magnification:  $\times$ 200)



Immunohistochemistry of paraffin-embedded Human cervical cancer tissue using TA372549 (FANCB Antibody) at dilution 1/60, treated with synthetic peptide. (Original magnification: ×200)



Immunohistochemistry of paraffin-embedded Human thyroid cancer tissue using TA372549 (FANCB Antibody) at dilution 1/60 (Original magnification: ×200)



Immunohistochemistry of paraffin-embedded Human thyroid cancer tissue using TA372549 (FANCB Antibody) at dilution 1/60, treated with synthetic peptide. (Original magnification: ×200)