

Product datasheet for **TA372544S**

LRATD1 Rabbit Polyclonal Antibody

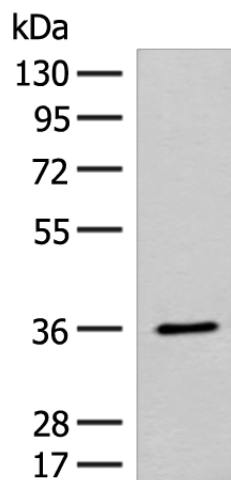
Product data:

Product Type:	Primary Antibodies
Applications:	IHC, WB
Recommended Dilution:	WB: 500-2000 WB positive control: Mouse small intestines tissue lysate IHC: 40-200 Positive control: Human thyroid cancer Predicted cell location: Nucleus
Reactivity:	Human, Mouse
Host:	Rabbit
Isotype:	IgG
Clonality:	Polyclonal
Immunogen:	Synthetic peptide of human LRATD1
Formulation:	pH7.4 PBS, 0.05% NaN ₃ , 40% Glycerol
Concentration:	lot specific
Purification:	Antigen affinity purification
Conjugation:	Unconjugated
Storage:	Store at -20°C.
Stability:	1 year
Predicted Protein Size:	32 kDa
Gene Name:	family with sequence similarity 84 member A
Database Link:	Entrez Gene 151354 Human Q96KN4
Background:	May play a role in cell morphology and motility.
Synonyms:	FLJ35392; NSE1; OTTHUMP00000200419; PP11517

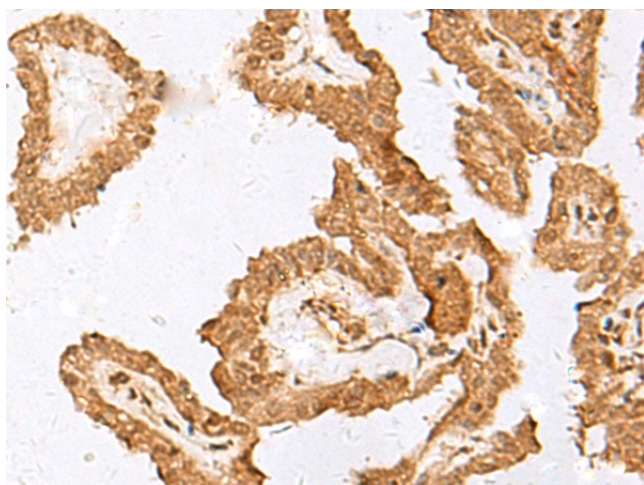


[View online »](#)

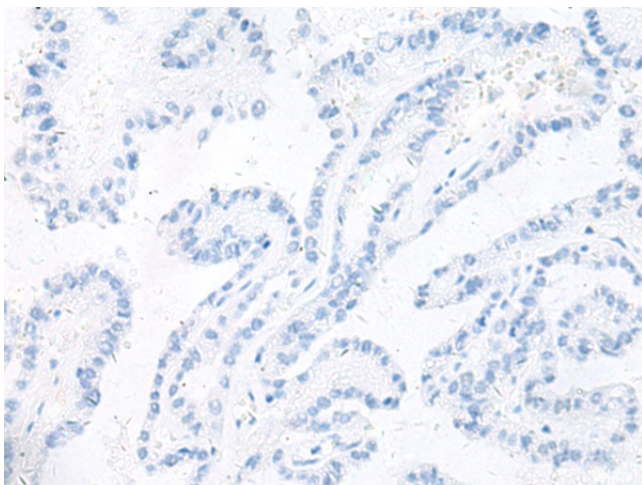
Product images:



Gel: 8%SDS-PAGE
Lysate: 40 μ g
Lane: Mouse small intestines tissue lysate
Primary antibody: [TA372544] (LRATD1 Antibody) at dilution 1/300
Secondary antibody: Goat anti rabbit IgG at 1/8000 dilution
Exposure time: 30 seconds



Immunohistochemistry of paraffin-embedded Human thyroid cancer tissue using [TA372544] (LRATD1 Antibody) at dilution 1/35 (Original magnification: \times 200)



Immunohistochemistry of paraffin-embedded Human thyroid cancer tissue using [TA372544] (LRATD1 Antibody) at dilution 1/35, treated with synthetic peptide. (Original magnification: ×200)