

Product datasheet for **TA372542**

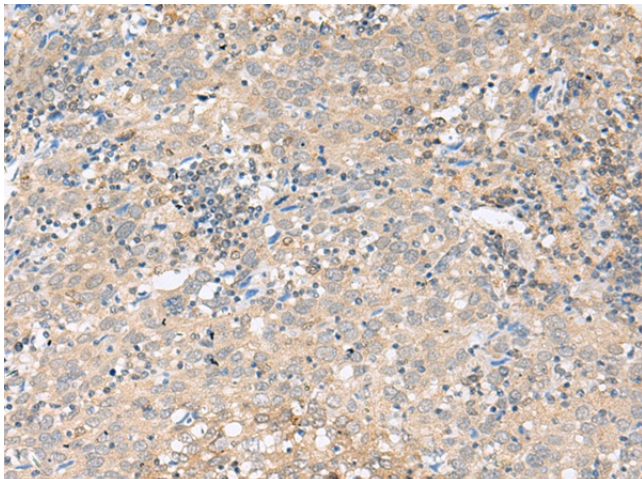
FAM38B (PIEZO2) Rabbit Polyclonal Antibody

Product data:

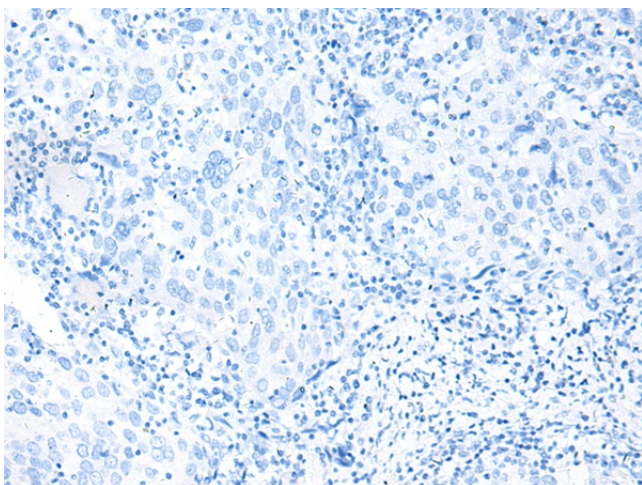
Product Type:	Primary Antibodies
Applications:	IHC
Recommended Dilution:	IHC: 40-200 Positive control: Human cervical cancer Predicted cell location: Cytoplasm
Reactivity:	Human, Mouse
Host:	Rabbit
Isotype:	IgG
Clonality:	Polyclonal
Immunogen:	Synthetic peptide of human PIEZO2
Formulation:	pH7.4 PBS, 0.05% NaN ₃ , 40% Glycerol
Concentration:	lot specific
Purification:	Antigen affinity purification
Conjugation:	Unconjugated
Storage:	Store at -20°C.
Stability:	1 year
Gene Name:	piezo type mechanosensitive ion channel component 2
Database Link:	Entrez Gene 63895 Human Q9H5I5
Background:	The protein encoded by this gene contains more than thirty transmembrane domains and likely functions as part of mechanically-activated (MA) cation channels. These channels serve to connect mechanical forces to biological signals. The encoded protein quickly adapts MA currents in somatosensory neurons. Defects in this gene are a cause of type 5 distal arthrogyrosis. Several alternatively spliced transcript variants of this gene have been described, but their full-length nature is not known.
Synonyms:	5930434P17; 9030411M15Rik; 9430028L06Rik; Fam38b; Fam38b2



[View online »](#)

Product images:

Immunohistochemistry of paraffin-embedded Human cervical cancer tissue using TA372542 (PIEZO2 Antibody) at dilution 1/35 (Original magnification: $\times 200$)



Immunohistochemistry of paraffin-embedded Human cervical cancer tissue using TA372542 (PIEZO2 Antibody) at dilution 1/35, treated with synthetic peptide. (Original magnification: $\times 200$)