

Product datasheet for **TA372539S**

FAM177B Rabbit Polyclonal Antibody

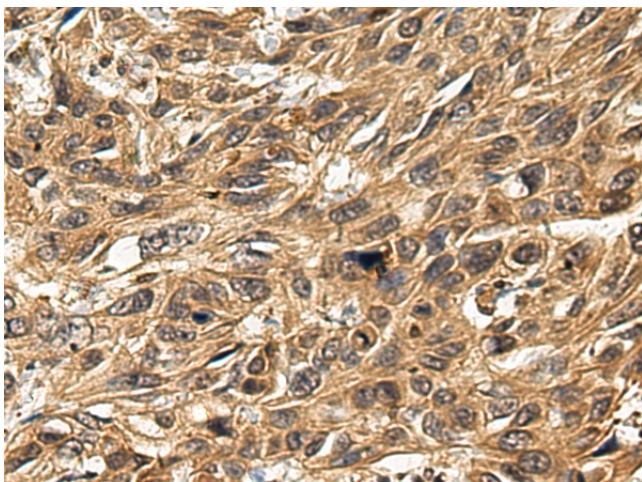
Product data:

Product Type:	Primary Antibodies
Applications:	IHC
Recommended Dilution:	IHC: 50-200 Positive control: Human esophagus cancer Predicted cell location: Cytoplasm
Reactivity:	Human
Host:	Rabbit
Isotype:	IgG
Clonality:	Polyclonal
Immunogen:	Synthetic peptide of human FAM177B
Formulation:	pH7.4 PBS, 0.05% NaN ₃ , 40% Glycerol
Concentration:	lot specific
Purification:	Antigen affinity purification
Conjugation:	Unconjugated
Storage:	Store at -20°C.
Stability:	1 year
Gene Name:	family with sequence similarity 177 member B
Database Link:	Entrez Gene 400823 Human A6PVY3
Background:	The function of this protein remains unknown.
Synonyms:	FLJ43505; OTTHUMP00000196557; RP11-452F19.2

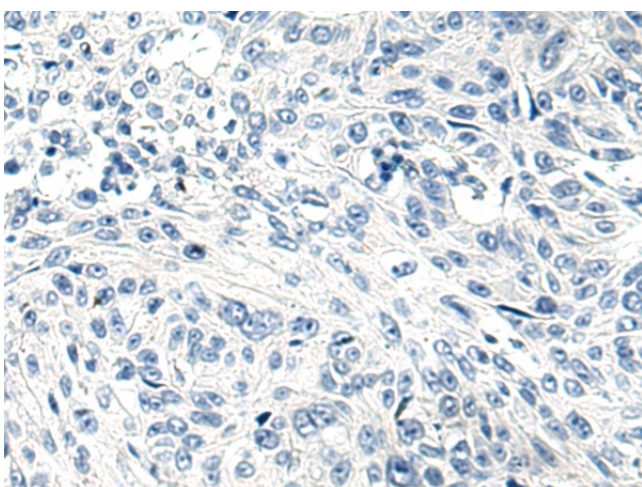


[View online »](#)

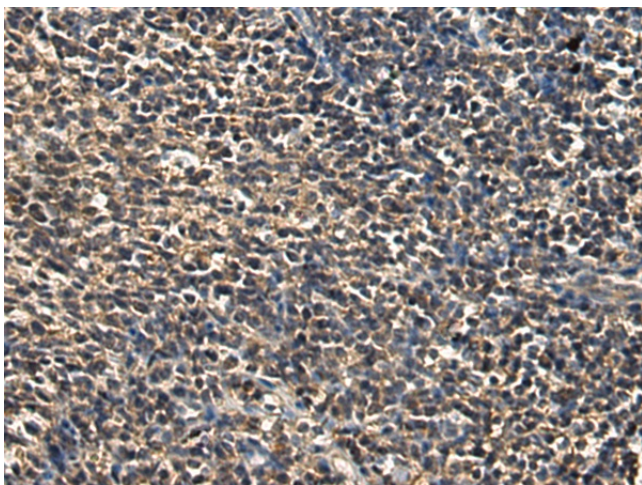
Product images:



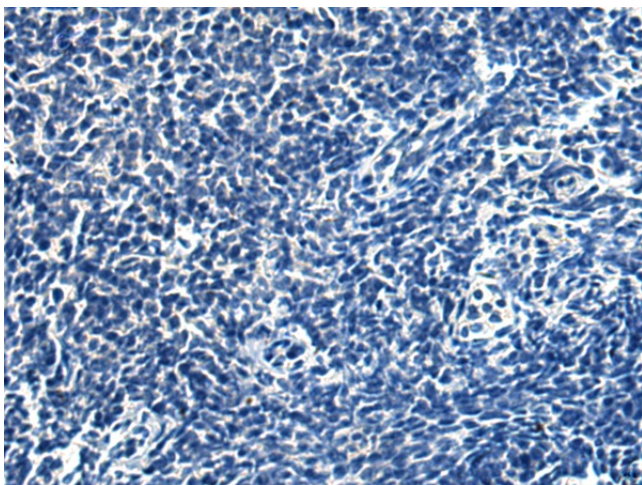
Immunohistochemistry of paraffin-embedded Human esophagus cancer using [TA372539] (FAM177B Antibody) at dilution 1/50 (Original magnification: $\times 200$)



Immunohistochemistry of paraffin-embedded Human esophagus cancer using [TA372539] (FAM177B Antibody) at dilution 1/50, treated with synthetic peptide. (Original magnification: $\times 200$)



Immunohistochemistry of paraffin-embedded Human tonsil using [TA372539] (FAM177B Antibody) at dilution 1/50 (Original magnification: ×200)



Immunohistochemistry of paraffin-embedded Human tonsil using [TA372539] (FAM177B Antibody) at dilution 1/50, treated with synthetic peptide. (Original magnification: ×200)