

Product datasheet for **TA372538**

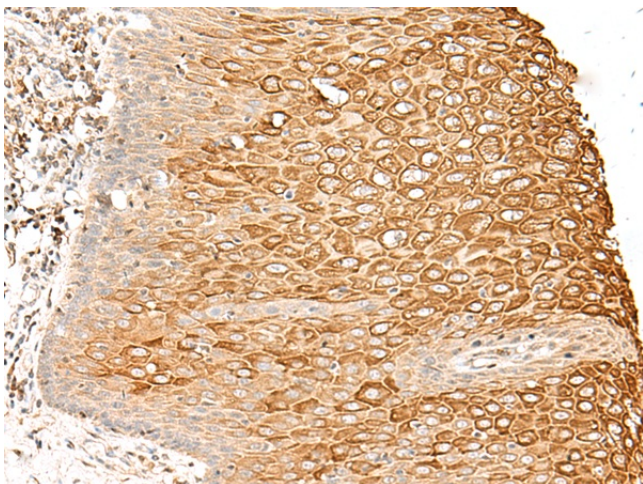
NALF2 Rabbit Polyclonal Antibody

Product data:

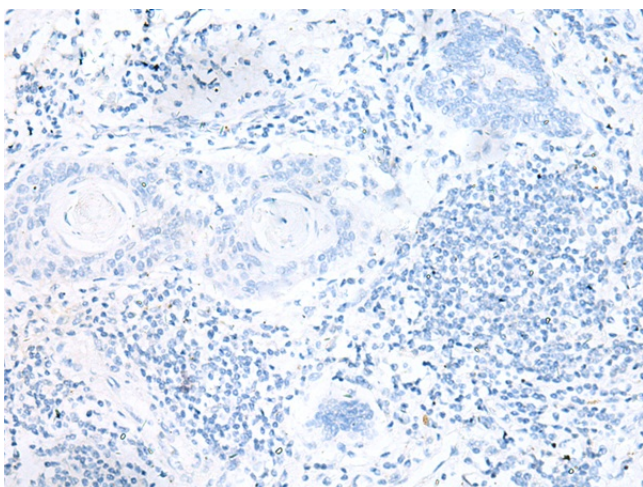
Product Type:	Primary Antibodies
Applications:	IHC
Recommended Dilution:	IHC: 40-200 Positive control: Human esophagus cancer Predicted cell location: Cell membrane
Reactivity:	Human
Host:	Rabbit
Isotype:	IgG
Clonality:	Polyclonal
Immunogen:	Synthetic peptide of human FAM155B
Formulation:	pH7.4 PBS, 0.05% NaN ₃ , 40% Glycerol
Concentration:	lot specific
Purification:	Antigen affinity purification
Conjugation:	Unconjugated
Storage:	Store at -20°C.
Stability:	1 year
Gene Name:	family with sequence similarity 155 member B
Database Link:	Entrez Gene 27112 Human O75949
Background:	This gene encodes a product belonging to a family of proteins with unknown function. The presence of two transmembrane domains suggests that this protein is a multi-pass membrane protein.
Synonyms:	bB57D9.1; CXorf63; TED; TMEM28



[View online »](#)

Product images:


Immunohistochemistry of paraffin-embedded Human esophagus cancer tissue using TA372538 (FAM155B Antibody) at dilution 1/30 (Original magnification: $\times 200$)



Immunohistochemistry of paraffin-embedded Human esophagus cancer tissue using TA372538 (FAM155B Antibody) at dilution 1/30, treated with synthetic peptide. (Original magnification: $\times 200$)