

Product datasheet for **TA372532S**

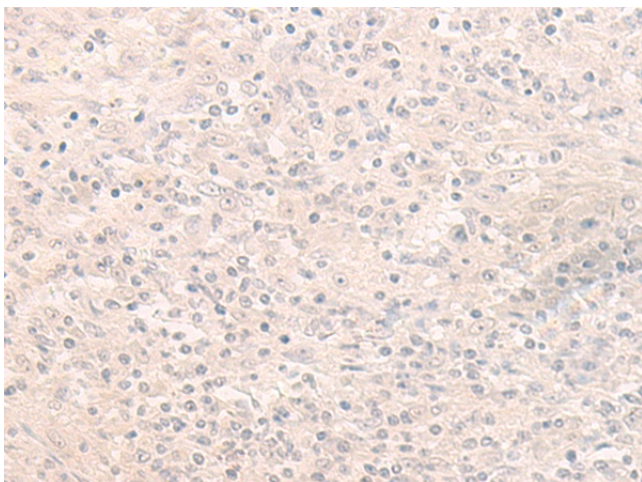
C14orf180 Rabbit Polyclonal Antibody

Product data:

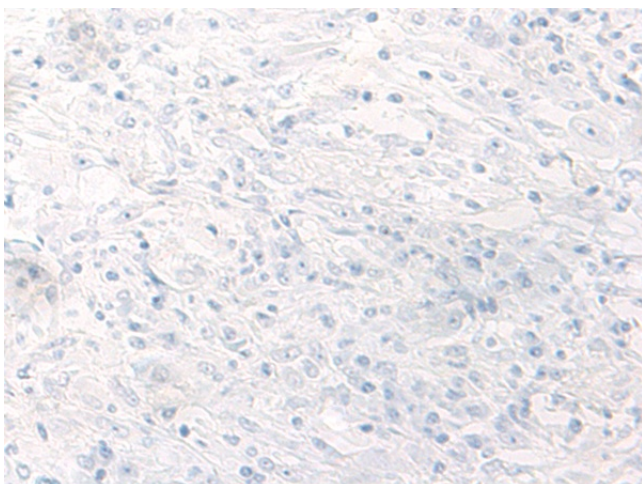
Product Type:	Primary Antibodies
Applications:	IHC
Recommended Dilution:	IHC: 25-100 Positive control: Human liver cancer Predicted cell location: Cell membrane
Reactivity:	Human
Host:	Rabbit
Isotype:	IgG
Clonality:	Polyclonal
Immunogen:	Synthetic peptide of human C14orf180
Formulation:	pH7.4 PBS, 0.05% NaN ₃ , 40% Glycerol
Concentration:	lot specific
Purification:	Antigen affinity purification
Conjugation:	Unconjugated
Storage:	Store at -20°C.
Stability:	1 year
Gene Name:	chromosome 14 open reading frame 180
Database Link:	Entrez Gene 400258 Human Q8N912
Background:	C14orf180 is a multi-pass membrane protein. The function of the C14orf180 protein is not known.
Synonyms:	C14orf77; FLJ38594; OTTHUMP00000028407



[View online »](#)

Product images:


Immunohistochemistry of paraffin-embedded Human liver cancer tissue using [TA372532] (C14orf180 Antibody) at dilution 1/30 (Original magnification: ×200)



Immunohistochemistry of paraffin-embedded Human liver cancer tissue using [TA372532] (C14orf180 Antibody) at dilution 1/30, treated with synthetic peptide. (Original magnification: ×200)