

## Product datasheet for **TA372531**

### **MOBKL2B (MOB3B) Rabbit Polyclonal Antibody**

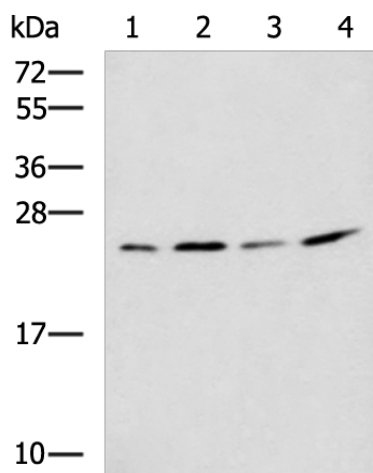
#### **Product data:**

Product Type:	Primary Antibodies
Applications:	WB
Recommended Dilution:	WB: 200-1000 WB positive control: 293T, LOVO, Hela and K562 cell lysates
Reactivity:	Human, Mouse
Host:	Rabbit
Isotype:	IgG
Clonality:	Polyclonal
Immunogen:	Synthetic peptide of human MOB3B
Formulation:	pH7.4 PBS, 0.05% NaN <sub>3</sub> , 40% Glycerol
Concentration:	lot specific
Purification:	Antigen affinity purification
Conjugation:	Unconjugated
Storage:	Store at -20°C.
Stability:	1 year
Predicted Protein Size:	25 kDa
Gene Name:	MOB kinase activator 3B
Database Link:	<a href="#">Entrez Gene 79817 Human Q86TA1</a>
Background:	The protein encoded by this gene shares similarity with the yeast Mob1 protein. Yeast Mob1 binds Mps1p, a protein kinase essential for spindle pole body duplication and mitotic checkpoint regulation. This gene is located on the opposite strand as the interferon kappa precursor (IFNK) gene.
Synonyms:	C9orf35; MOB1D; MOBKL2B



[View online »](#)

## Product images:



Gel: 12%SDS-PAGE

Lysate: 40  $\mu$ g

Lane 1-4: 293T

LOVO

Hela and K562 cell lysates

Primary antibody: TA372531 (MOB3B Antibody)  
at dilution 1/650

Secondary antibody: Goat anti rabbit IgG at  
1/5000 dilution

Exposure time: 1 minute