

Product datasheet for **TA372530**

METT11D1 (METTL17) Rabbit Polyclonal Antibody

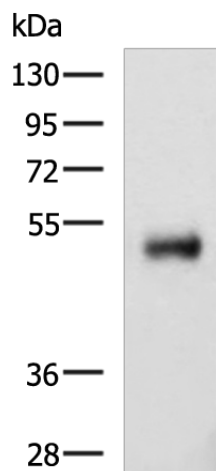
Product data:

Product Type:	Primary Antibodies
Applications:	IHC, WB
Recommended Dilution:	WB: 500-2000 WB positive control: Human colorectal cancer tissue lysate IHC: 20-100 Positive control: Human tonsil Predicted cell location: Cytoplasm
Reactivity:	Human, Mouse
Host:	Rabbit
Isotype:	IgG
Clonality:	Polyclonal
Immunogen:	Synthetic peptide of human METTL17
Formulation:	pH7.4 PBS, 0.05% NaN ₃ , 40% Glycerol
Concentration:	lot specific
Purification:	Antigen affinity purification
Conjugation:	Unconjugated
Storage:	Store at -20°C.
Stability:	1 year
Predicted Protein Size:	51 kDa
Gene Name:	methyltransferase like 17
Database Link:	Entrez Gene 64745 Human Q9H7H0
Background:	May be a component of the mitochondrial small ribosomal subunit.
Synonyms:	METT11D1

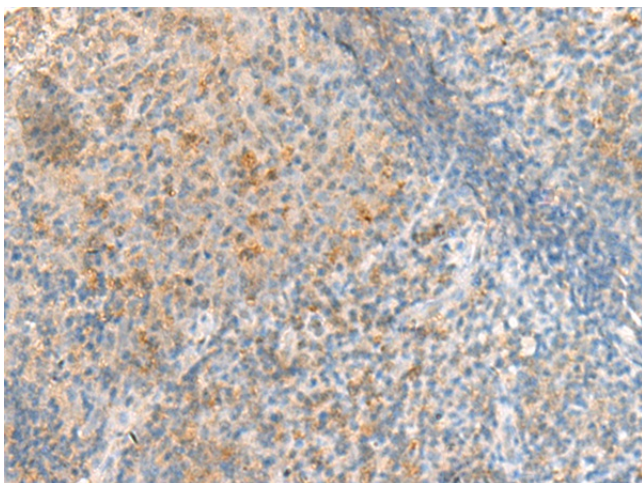


[View online »](#)

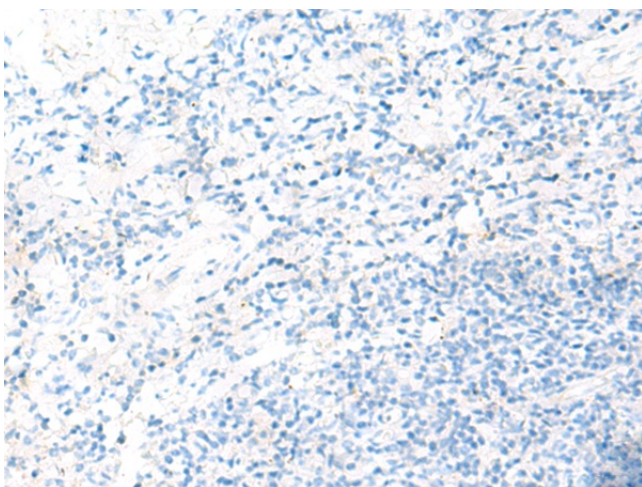
Product images:



Gel: 8%SDS-PAGE
 Lysate: 40 µg
 Lane: Human colorectal cancer tissue lysate
 Primary antibody: TA372530 (METTL17 Antibody)
 at dilution 1/800
 Secondary antibody: Goat anti rabbit IgG at
 1/5000 dilution
 Exposure time: 5 minutes



Immunohistochemistry of paraffin-embedded
 Human tonsil tissue using TA372530 (METTL17
 Antibody) at dilution 1/50 (Original magnification:
 ×200)



Immunohistochemistry of paraffin-embedded Human tonsil tissue using TA372530 (METTL17 Antibody) at dilution 1/50, treated with synthetic peptide. (Original magnification: ×200)