

Product datasheet for **TA372524**

NIPSNAP2 Rabbit Polyclonal Antibody

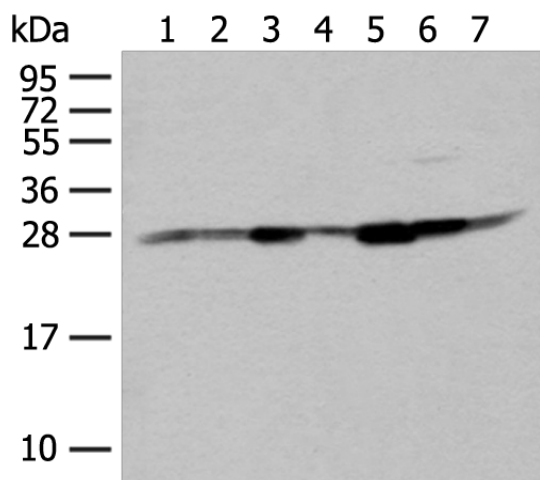
Product data:

Product Type:	Primary Antibodies
Applications:	WB
Recommended Dilution:	WB: 500-2000 WB positive control: Hela, HT-29 and HEPG2 cell, Human liver tissue, Human fetal liver tissue, Mouse liver tissue and Human fetal brain tissue lysates
Reactivity:	Human, Mouse
Host:	Rabbit
Isotype:	IgG
Clonality:	Polyclonal
Immunogen:	Synthetic peptide of human NIPSNAP2
Formulation:	pH7.4 PBS, 0.05% NaN ₃ , 40% Glycerol
Concentration:	lot specific
Purification:	Antigen affinity purification
Conjugation:	Unconjugated
Storage:	Store at -20°C.
Stability:	1 year
Predicted Protein Size:	34 kDa
Gene Name:	glioblastoma amplified sequence
Database Link:	Entrez Gene 2631 Human O75323
Background:	This gene encodes a member of the NipSnap family of proteins that may be involved in vesicular transport. The encoded protein is localized to mitochondria and plays a role in oxidative phosphorylation. A pseudogene of this gene is located on the long arm of chromosome 2. Alternatively spliced transcript variants encoding multiple isoforms have been observed for this gene.
Synonyms:	NIPSNAP2



[View online »](#)

Product images:



Gel: 12%SDS-PAGE
Lysate: 40 μ g
Lane 1-7: HeLa
HT-29 and HEPG2 cell
Human liver tissue
Human fetal liver tissue
Mouse liver tissue and Human fetal brain tissue
lysates
Primary antibody: TA372524 (NIPSNAP2
Antibody) at dilution 1/400
Secondary antibody: Goat anti rabbit IgG at
1/8000 dilution
Exposure time: 1 second