

## Product datasheet for **TA372514S**

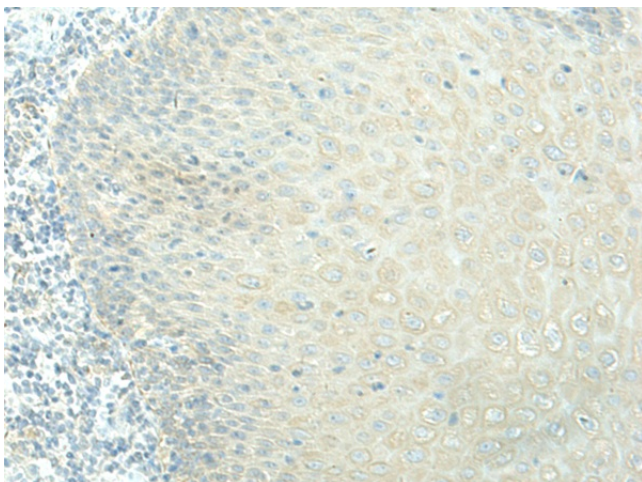
### **EVI2B Rabbit Polyclonal Antibody**

#### **Product data:**

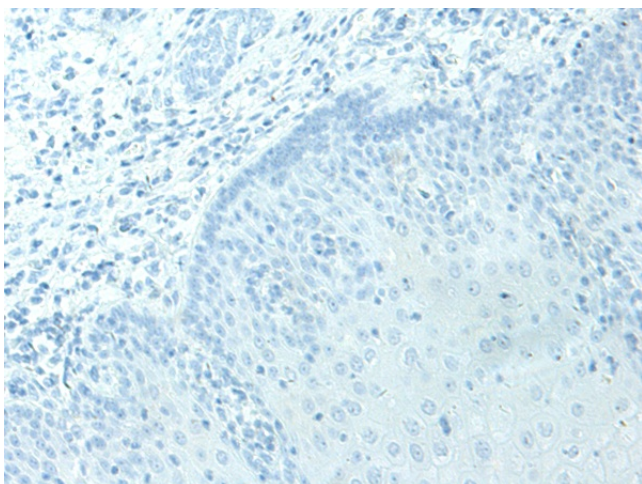
<b>Product Type:</b>	Primary Antibodies
<b>Applications:</b>	IHC
<b>Recommended Dilution:</b>	IHC: 40-200 Positive control: Human esophagus cancer Predicted cell location: Cytoplasm and Cell membrane
<b>Reactivity:</b>	Human, Mouse
<b>Host:</b>	Rabbit
<b>Isotype:</b>	IgG
<b>Clonality:</b>	Polyclonal
<b>Immunogen:</b>	Synthetic peptide of human EVI2B
<b>Formulation:</b>	pH7.4 PBS, 0.05% NaN <sub>3</sub> , 40% Glycerol
<b>Concentration:</b>	lot specific
<b>Purification:</b>	Antigen affinity purification
<b>Conjugation:</b>	Unconjugated
<b>Storage:</b>	Store at -20°C.
<b>Stability:</b>	1 year
<b>Gene Name:</b>	ecotropic viral integration site 2B
<b>Database Link:</b>	<a href="#">Entrez Gene 2124 Human P34910</a>
<b>Background:</b>	EVI2B, also known as CD361. CD361 is a poorly characterized type I transmembrane protein, expressed from one of three genes embedded in intron 27b of the neurofibromatosis type 1 (NF1) gene. The DNA strand that is transcribed to produce CD361 is the complementary one to the strand encoding NF1. Murine homolog to human CD361 is associated with ecotropic viral insertions, which have been implicated in the expression of murine myeloid leukemias. CD361 has been also reported to be involved in melanocyte and keratinocyte differentiation. However, it is expressed mainly in peripheral blood and bone marrow.
<b>Synonyms:</b>	D17S376; EVDB; EVI-2B



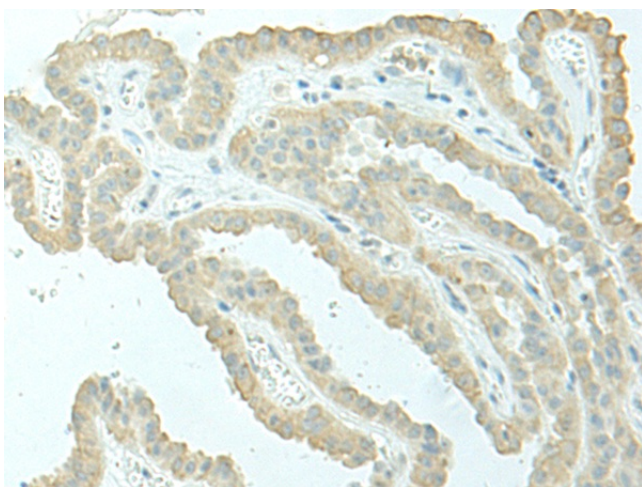
[View online »](#)

**Product images:**

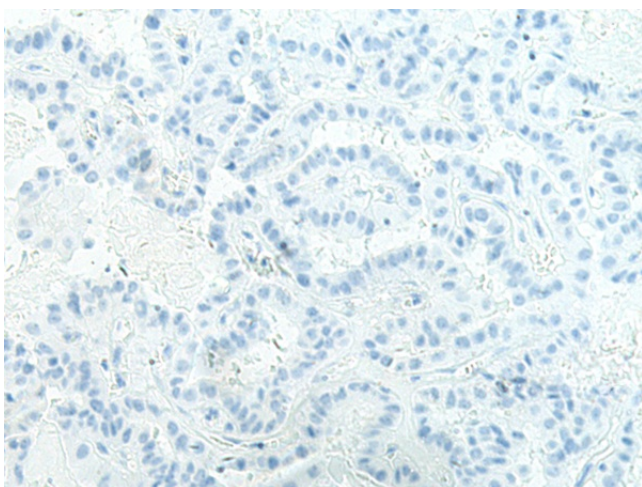
Immunohistochemistry of paraffin-embedded Human esophagus cancer tissue using [TA372514] (EVI2B Antibody) at dilution 1/40 (Original magnification:  $\times 200$ )



Immunohistochemistry of paraffin-embedded Human esophagus cancer tissue using [TA372514] (EVI2B Antibody) at dilution 1/40, treated with synthetic peptide. (Original magnification:  $\times 200$ )



Immunohistochemistry of paraffin-embedded Human thyroid cancer tissue using [TA372514] (EVI2B Antibody) at dilution 1/40 (Original magnification:  $\times 200$ )



Immunohistochemistry of paraffin-embedded Human thyroid cancer tissue using [TA372514] (EVI2B Antibody) at dilution 1/40, treated with synthetic peptide. (Original magnification:  $\times 200$ )