

## Product datasheet for **TA372511**

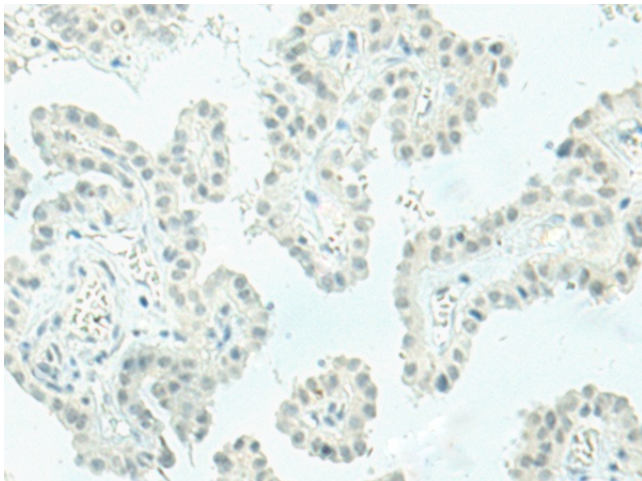
### ETV2 Rabbit Polyclonal Antibody

#### Product data:

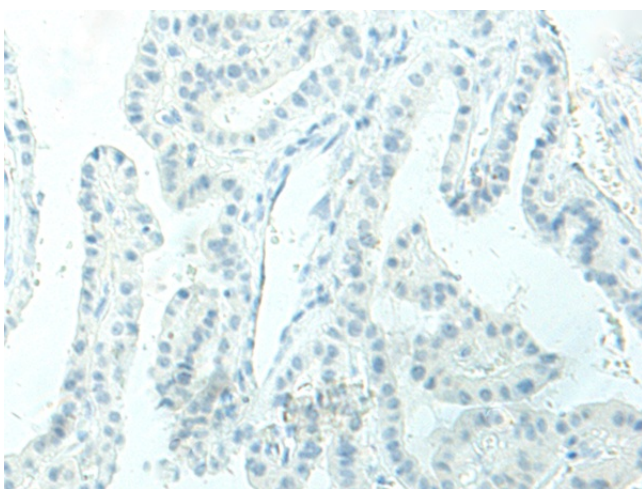
Product Type:	Primary Antibodies
Applications:	IHC
Recommended Dilution:	IHC: 10-50 Positive control: Human thyroid cancer Predicted cell location: Nucleus
Reactivity:	Human
Host:	Rabbit
Isotype:	IgG
Clonality:	Polyclonal
Immunogen:	Synthetic peptide of human ETV2
Formulation:	pH7.4 PBS, 0.05% NaN <sub>3</sub> , 40% Glycerol
Concentration:	lot specific
Purification:	Antigen affinity purification
Conjugation:	Unconjugated
Storage:	Store at -20°C.
Stability:	1 year
Gene Name:	ETS variant 2
Database Link:	<a href="#">Entrez Gene 2116 Human</a> <a href="#">O00321</a>
Background:	ETS translocation variant 2 (ETV2), also known as ETSRP and ER71, is a 37 kDa transcription factor that is expressed in presumptive vascular progenitor cells. It plays an important role in vascular development by promoting the expansion of hemangioblasts and vascular endothelial cells while inhibiting differentiation into cardiomyocytes. It contains one ETS DNA binding domain (aa 234-314). Within aa 125-231, mouse ETV2 shares 54% and 85% aa sequence identity with human and rat ETV2, respectively.
Synonyms:	ER71; ETSRP71; MGC129834; MGC129835; OTTHUMP00000197799



[View online »](#)

**Product images:**

Immunohistochemistry of paraffin-embedded Human thyroid cancer tissue using TA372511 (ETV2 Antibody) at dilution 1/20 (Original magnification: ×200)



Immunohistochemistry of paraffin-embedded Human thyroid cancer tissue using TA372511 (ETV2 Antibody) at dilution 1/20, treated with synthetic peptide. (Original magnification: ×200)