

Product datasheet for **TA372510S**

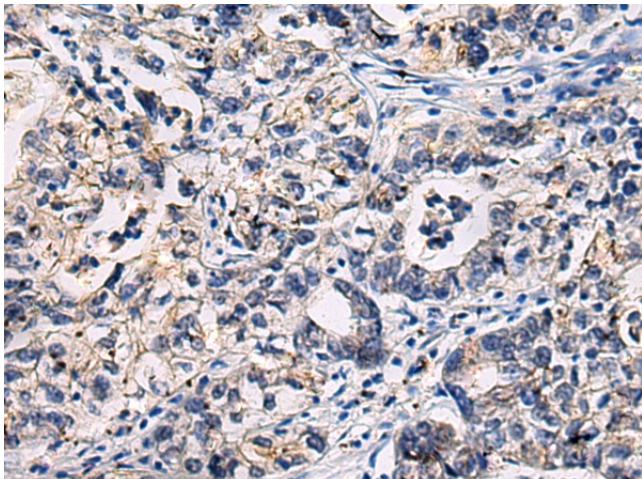
ETL (ADGRL4) Rabbit Polyclonal Antibody

Product data:

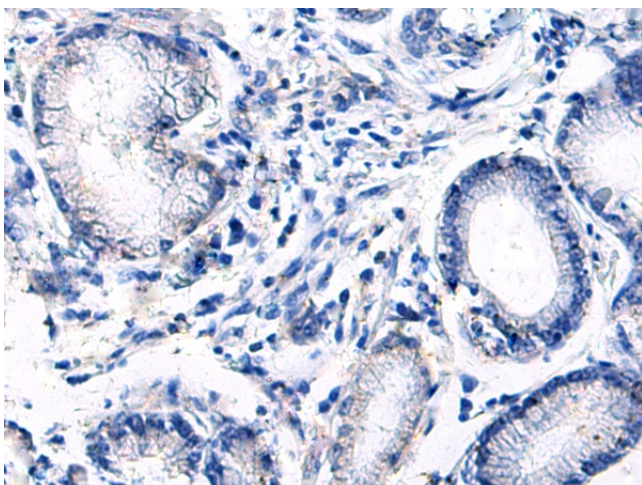
Product Type:	Primary Antibodies
Applications:	IHC
Recommended Dilution:	IHC: 25-50 Positive control: Human gastric cancer Predicted cell location: Cytoplasm
Reactivity:	Human, Mouse, Rat
Host:	Rabbit
Isotype:	IgG
Clonality:	Polyclonal
Immunogen:	Synthetic peptide of human ADGRL4
Formulation:	pH7.4 PBS, 0.05% NaN ₃ , 40% Glycerol
Concentration:	lot specific
Purification:	Antigen affinity purification
Conjugation:	Unconjugated
Storage:	Store at -20°C.
Stability:	1 year
Gene Name:	adhesion G protein-coupled receptor L4
Database Link:	Entrez Gene 64123 Human Q9HBW9
Background:	Endothelial orphan receptor that acts as a key regulator of angiogenesis.



[View online »](#)

Product images:

Immunohistochemistry of paraffin-embedded Human gastric cancer tissue using [TA372510] (ADGRL4 Antibody) at dilution 1/35 (Original magnification: $\times 200$)



Immunohistochemistry of paraffin-embedded Human gastric cancer tissue using [TA372510] (ADGRL4 Antibody) at dilution 1/35, treated with synthetic peptide. (Original magnification: $\times 200$)