

## Product datasheet for **TA372498S**

### IL17B Rabbit Polyclonal Antibody

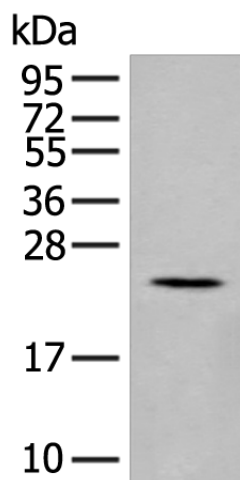
#### Product data:

Product Type:	Primary Antibodies
Applications:	IHC, WB
Recommended Dilution:	WB: 200-1000 WB positive control: Rat pancreas tissue lysate IHC: 25-100 Positive control: Human tonsil Predicted cell location: Secreted
Reactivity:	Human, Mouse, Rat
Host:	Rabbit
Isotype:	IgG
Clonality:	Polyclonal
Immunogen:	Synthetic peptide of human IL17B
Formulation:	pH7.4 PBS, 0.05% NaN <sub>3</sub> , 40% Glycerol
Concentration:	lot specific
Purification:	Antigen affinity purification
Conjugation:	Unconjugated
Storage:	Store at -20°C.
Stability:	1 year
Predicted Protein Size:	21 kDa
Gene Name:	interleukin 17B
Database Link:	<a href="#">Entrez Gene 27190 Human Q9UHF5</a>
Background:	The protein encoded by this gene is a T cell-derived cytokine that shares sequence similarity with IL17. This cytokine was reported to stimulate the release of TNF alpha (TNF) and IL1 beta (IL1B) from a monocytic cell line. Immunohistochemical analysis of several nerve tissues indicated that this cytokine is primarily localized to neuronal cell bodies. Alternative splicing results in multiple splice variants.
Synonyms:	IL-17B; IL-20; IL20; Interleukin-20; MGC138900; MGC138901; NIRF; ZCYTO7

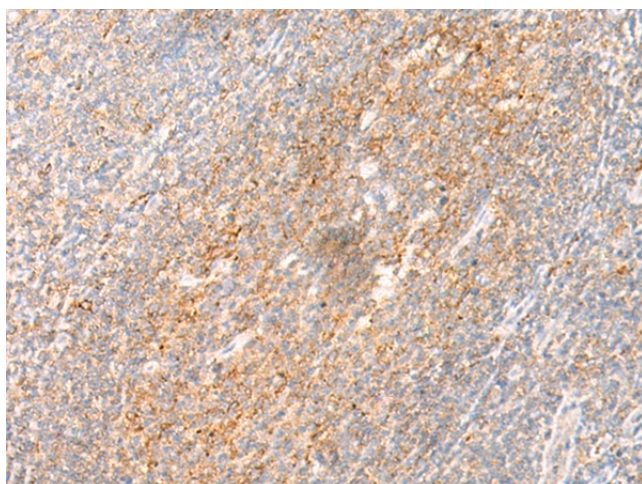


[View online »](#)

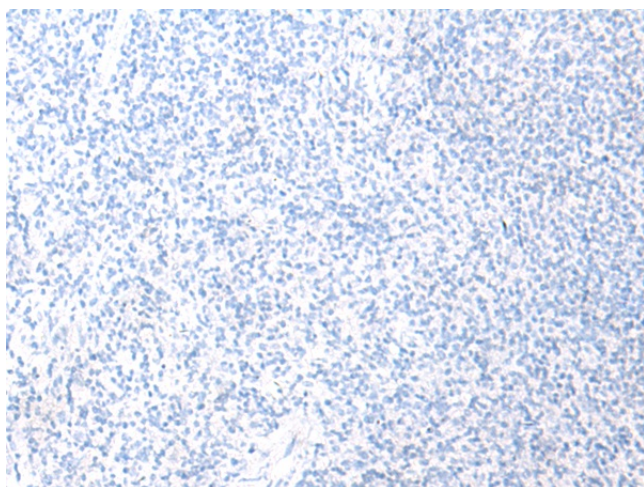
## Product images:



Gel: 12%SDS-PAGE  
Lysate: 40  $\mu$ g  
Lane: Rat pancreas tissue lysate  
Primary antibody: [TA372498] (IL17B Antibody) at dilution 1/200  
Secondary antibody: Goat anti rabbit IgG at 1/8000 dilution  
Exposure time: 3 minutes



Immunohistochemistry of paraffin-embedded Human tonsil tissue using [TA372498] (IL17B Antibody) at dilution 1/20 (Original magnification:  $\times$ 200)



Immunohistochemistry of paraffin-embedded Human tonsil tissue using [TA372498] (IL17B Antibody) at dilution 1/20, treated with synthetic peptide. (Original magnification:  $\times 200$ )