

## Product datasheet for **TA372492**

### SF20 (MYDGF) Rabbit Polyclonal Antibody

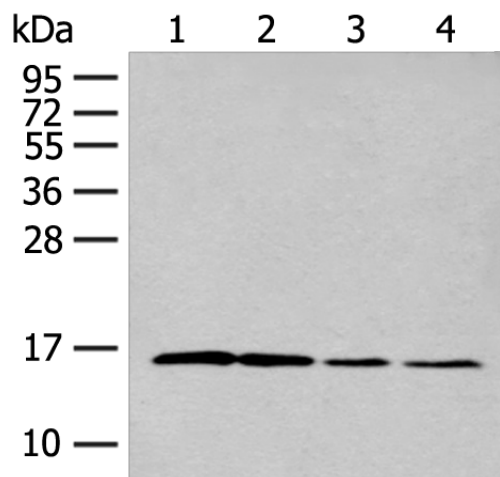
#### Product data:

|                         |   |
|-------------------------|---|
| Product Type:           | Primary Antibodies  |
| Applications:           | WB  |
| Recommended Dilution:   | WB: 500-2000<br>WB positive control: HEPG2 cell, Human between peritoneal stromal sarcoma tissue, K562 and 293T cell lysates  |
| Reactivity:             | Human, Mouse  |
| Host:                   | Rabbit  |
| Isotype:                | IgG   |
| Clonality:              | Polyclonal  |
| Immunogen:              | Synthetic peptide of human MYDGF  |
| Formulation:            | pH7.4 PBS, 0.05% NaN <sub>3</sub> , 40% Glycerol  |
| Concentration:          | lot specific  |
| Purification:           | Antigen affinity purification   |
| Conjugation:            | Unconjugated  |
| Storage:                | Store at -20°C.   |
| Stability:              | 1 year  |
| Predicted Protein Size: | 19 kDa  |
| Gene Name:              | myeloid-derived growth factor   |
| Database Link:          | <a href="#">Entrez Gene 56005 Human Q969H8</a>  |
| Background:             | The protein encoded by this gene was previously thought to support proliferation of lymphoid cells and was considered an interleukin. However, this activity has not been reproducible and the function of this protein is currently unknown. |



[View online »](#)

## Product images:



Gel: 12%SDS-PAGE  
Lysate: 40  $\mu$ g  
Lane 1-4: HEPG2 cell  
Human between peritoneal stromal sarcoma  
tissue  
K562 and 293T cell lysates  
Primary antibody: TA372492 (MYDGF Antibody) at  
dilution 1/250  
Secondary antibody: Goat anti rabbit IgG at  
1/8000 dilution  
Exposure time: 6 minutes