

## Product datasheet for **TA372482S**

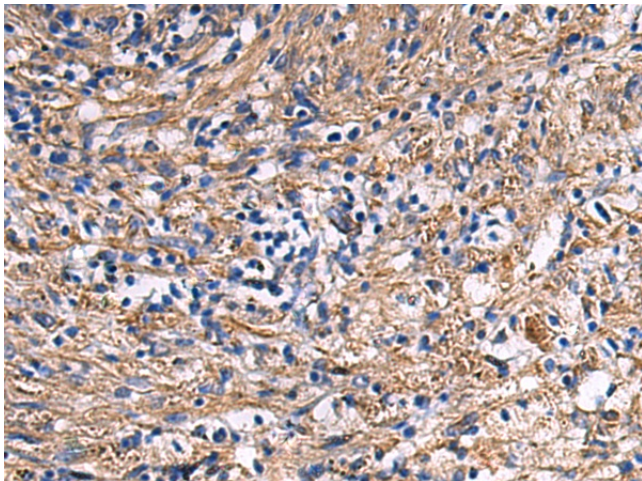
### EPB4IL2 (EPB41L2) Rabbit Polyclonal Antibody

#### Product data:

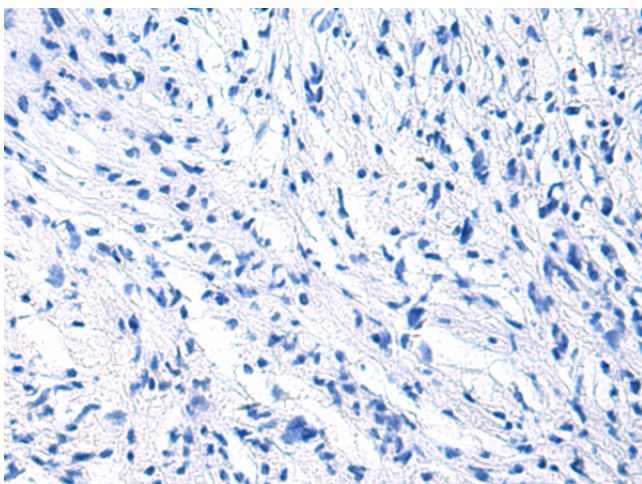
Product Type:	Primary Antibodies
Applications:	IHC
Recommended Dilution:	IHC: 50-100 Positive control: Human brain Predicted cell location: Cytoplasm and Cell membrane
Reactivity:	Human, Mouse
Host:	Rabbit
Isotype:	IgG
Clonality:	Polyclonal
Immunogen:	Synthetic peptide of human EPB41L2
Formulation:	pH7.4 PBS, 0.05% NaN <sub>3</sub> , 40% Glycerol
Concentration:	lot specific
Purification:	Antigen affinity purification
Conjugation:	Unconjugated
Storage:	Store at -20°C.
Stability:	1 year
Gene Name:	erythrocyte membrane protein band 4.1 like 2
Database Link:	<a href="#">Entrez Gene 2037 Human O43491</a>
Background:	Required for dynein-dynactin complex and NUMA1 recruitment at the mitotic cell cortex during anaphase (PubMed:23870127).
Synonyms:	4.1-G; 4.1G; DKFZp781D1972; DKFZp781H1755; OTTHUMP00000017197



[View online »](#)

**Product images:**

Immunohistochemistry of paraffin-embedded Human brain using [TA372482] (EPB41L2 Antibody) at dilution 1/25 (Original magnification:  $\times 200$ )



Immunohistochemistry of paraffin-embedded Human brain using [TA372482] (EPB41L2 Antibody) at dilution 1/25, treated with synthetic peptide. (Original magnification:  $\times 200$ )