

Product datasheet for **TA372477S**

EN1 Rabbit Polyclonal Antibody

Product data:

Product Type:	Primary Antibodies
Applications:	IHC, WB
Recommended Dilution:	WB: 500-2000 WB positive control: A172 and HEPG2 cell lysates IHC: 20-100 Positive control: Human lung cancer Predicted cell location: Nucleus
Reactivity:	Human, Mouse
Host:	Rabbit
Isotype:	IgG
Clonality:	Polyclonal
Immunogen:	Synthetic peptide of human EN1
Formulation:	pH7.4 PBS, 0.05% NaN ₃ , 40% Glycerol
Concentration:	lot specific
Purification:	Antigen affinity purification
Conjugation:	Unconjugated
Storage:	Store at -20°C.
Stability:	1 year
Predicted Protein Size:	40 kDa
Gene Name:	engrailed homeobox 1
Database Link:	Entrez Gene 2019 Human Q05925



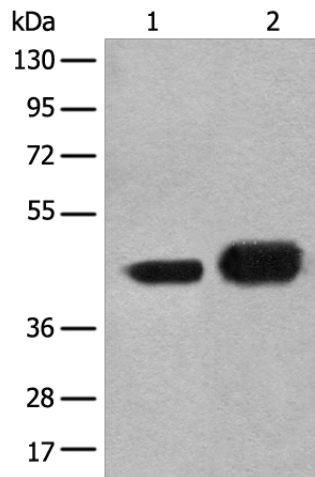
[View online »](#)

Background:

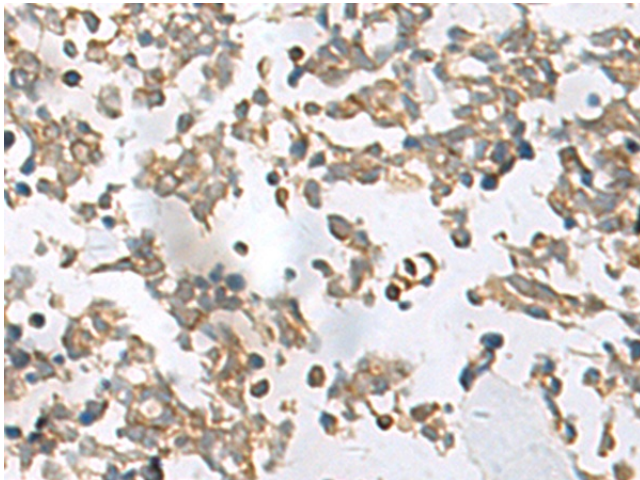
Homeobox-containing genes are thought to have a role in controlling development. In *Drosophila*, the 'engrailed' (*en*) gene plays an important role during development in segmentation, where it is required for the formation of posterior compartments. Different mutations in the mouse homologs, *En1* and *En2*, produced different developmental defects that frequently are lethal. The human engrailed homologs 1 and 2 encode homeodomain-containing proteins and have been implicated in the control of pattern formation during development of the central nervous system.

Synonyms:

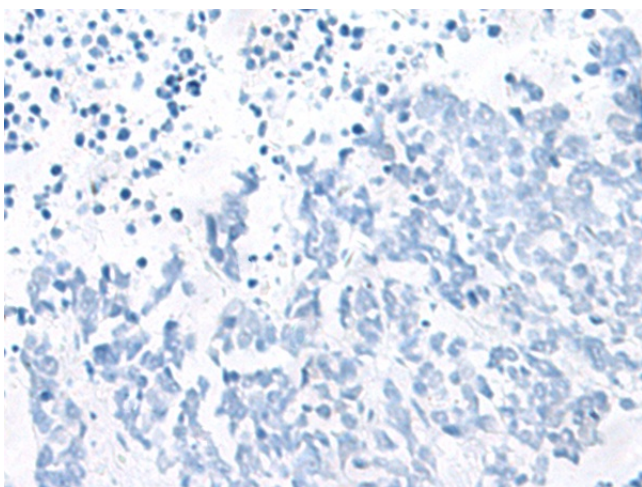
Hu-En-1

Product images:

Gel: 8%SDS-PAGE
Lysate: 40 μ g
Lane 1-2: A172 and HEPG2 cell lysates
Primary antibody: [TA372477] (EN1 Antibody) at dilution 1/300
Secondary antibody: Goat anti rabbit IgG at 1/8000 dilution
Exposure time: 5 seconds



Immunohistochemistry of paraffin-embedded Human lung cancer tissue using [TA372477] (EN1 Antibody) at dilution 1/20 (Original magnification: \times 200)



Immunohistochemistry of paraffin-embedded Human lung cancer tissue using [TA372477] (EN1 Antibody) at dilution 1/20, treated with synthetic peptide. (Original magnification: $\times 200$)