

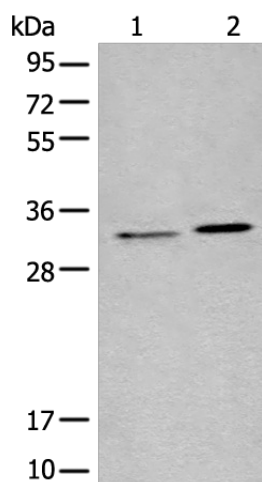
## Product datasheet for **TA372473S**

### TMEM192 Rabbit Polyclonal Antibody

#### Product data:

Product Type:	Primary Antibodies
Applications:	WB
Recommended Dilution:	WB: 200-1000 WB positive control: A172 cell and Human liver tissue lysates
Reactivity:	Human
Host:	Rabbit
Isotype:	IgG
Clonality:	Polyclonal
Immunogen:	Synthetic peptide of human TMEM192
Formulation:	pH7.4 PBS, 0.05% NaN <sub>3</sub> , 40% Glycerol
Concentration:	lot specific
Purification:	Antigen affinity purification
Conjugation:	Unconjugated
Storage:	Store at -20°C.
Stability:	1 year
Predicted Protein Size:	31 kDa
Gene Name:	transmembrane protein 192
Database Link:	<a href="#">Entrez Gene 201931 Human Q8IY95</a>
Background:	TMEM192 is a widely expressed, four transmembrane protein that localizes to late endosomal/lysosomal membranes. This localization is mediated by two dileucine motifs present at the amino-terminus of TMEM192. A cysteine residue near the carboxy residue is responsible for disulfide bond formation in TMEM192 homodimers. Little is known about the function of this protein.
Synonyms:	FLJ38482

[View online »](#)

**Product images:**


Gel: 12%SDS-PAGE  
 Lysate: 40 µg  
 Lane 1-2: A172 cell and Human liver tissue lysates  
 Primary antibody: [TA372473] (TMEM192 Antibody) at dilution 1/300  
 Secondary antibody: Goat anti rabbit IgG at 1/8000 dilution  
 Exposure time: 30 seconds