

Product datasheet for **TA372460S**

eIF2 alpha (EIF2S1) Rabbit Polyclonal Antibody

Product data:

Product Type:	Primary Antibodies
Applications:	IHC, WB
Recommended Dilution:	WB: 200-1000 WB positive control: A549 cell, Human placenta tissue, A172 cell, NIH/3T3 cell, Jurkat cell, HeLa cell lysates IHC: 30-150 Positive control: Human cervical cancer Predicted cell location: Cytoplasm
Reactivity:	Human, Mouse, Rat
Host:	Rabbit
Isotype:	IgG
Clonality:	Polyclonal
Immunogen:	Synthetic peptide of human EIF2S1
Formulation:	pH7.4 PBS, 0.05% NaN ₃ , 40% Glycerol
Concentration:	lot specific
Purification:	Antigen affinity purification
Conjugation:	Unconjugated
Storage:	Store at -20°C.
Stability:	1 year
Predicted Protein Size:	36 kDa
Gene Name:	eukaryotic translation initiation factor 2 subunit alpha
Database Link:	Entrez Gene 1965 Human P05198



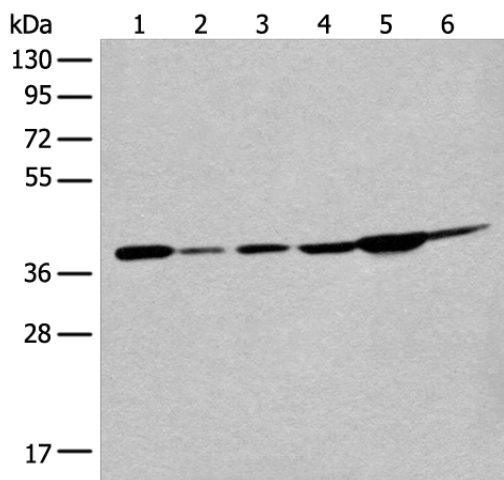
[View online »](#)

Background:

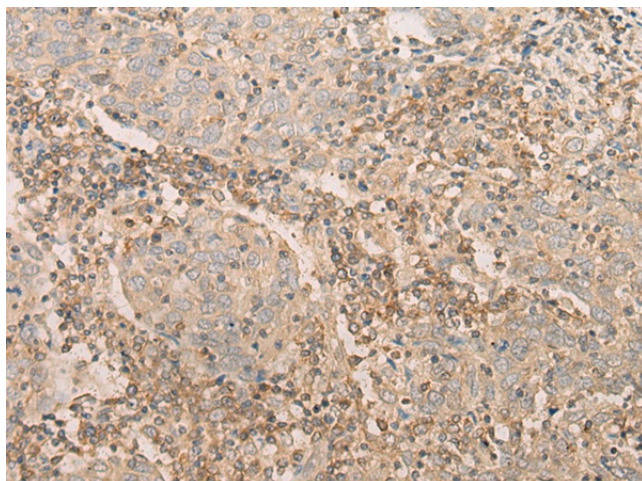
The translation initiation factor EIF2 catalyzes the first regulated step of protein synthesis initiation, promoting the binding of the initiator tRNA to 40S ribosomal subunits. Binding occurs as a ternary complex of methionyl-tRNA, EIF2, and GTP. EIF2 is composed of 3 nonidentical subunits, the 36-kD EIF2-alpha subunit (EIF2S1), the 38-kD EIF2-beta subunit (EIF2S2; MIM 603908), and the 52-kD EIF2-gamma subunit (EIF2S3; MIM 300161). The rate of formation of the ternary complex is modulated by the phosphorylation state of EIF2-alpha (Ernst et al., 1987 [PubMed 2948954]).

Synonyms:

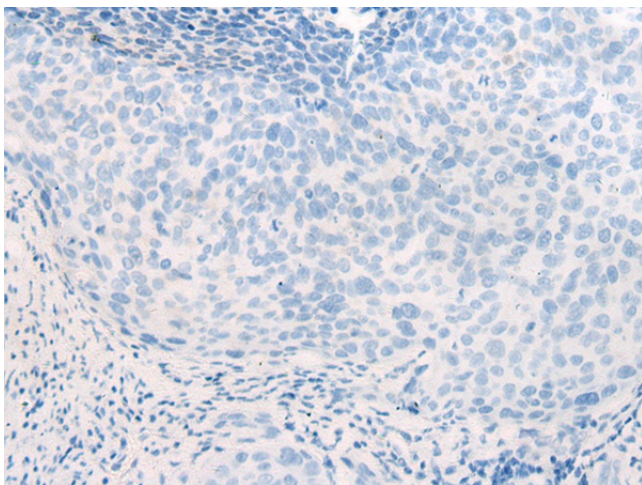
EIF-2; eIF-2-alpha; EIF-2A; EIF-2alpha; EIF2; EIF2A

Product images:


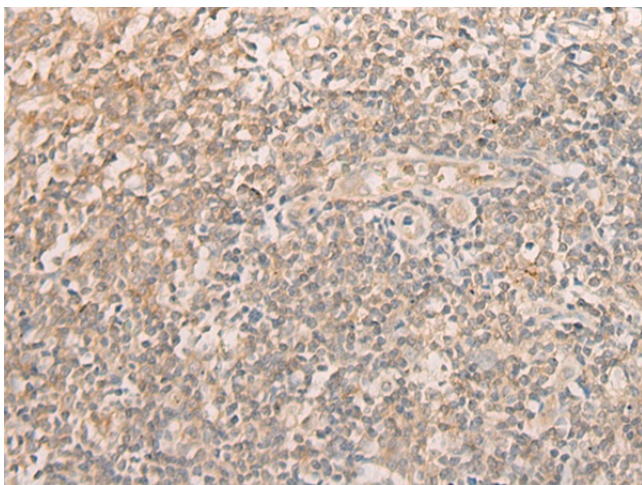
Gel: 8%SDS-PAGE
 Lysate: 40 µg
 Lane 1-6: A549 cell
 Human placenta tissue
 A172 cell
 NIH/3T3 cell
 Jurkat cell
 Hela cell lysates
 Primary antibody: [TA372460] (EIF2S1 Antibody)
 at dilution 1/250
 Secondary antibody: Goat anti rabbit IgG at
 1/8000 dilution
 Exposure time: 3 minutes



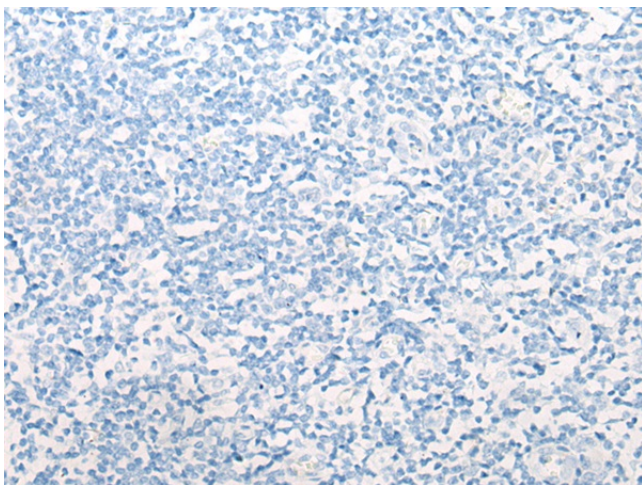
Immunohistochemistry of paraffin-embedded
 Human cervical cancer tissue using [TA372460]
 (EIF2S1 Antibody) at dilution 1/20 (Original
 magnification: ×200)



Immunohistochemistry of paraffin-embedded Human cervical cancer tissue using [TA372460] (EIF2S1 Antibody) at dilution 1/20, treated with synthetic peptide. (Original magnification: $\times 200$)



Immunohistochemistry of paraffin-embedded Human tonsil tissue using [TA372460] (EIF2S1 Antibody) at dilution 1/20 (Original magnification: $\times 200$)



Immunohistochemistry of paraffin-embedded Human tonsil tissue using [TA372460] (EIF2S1 Antibody) at dilution 1/20, treated with synthetic peptide. (Original magnification: $\times 200$)