

Product datasheet for **TA372457S**

MRI1 Rabbit Polyclonal Antibody

Product data:

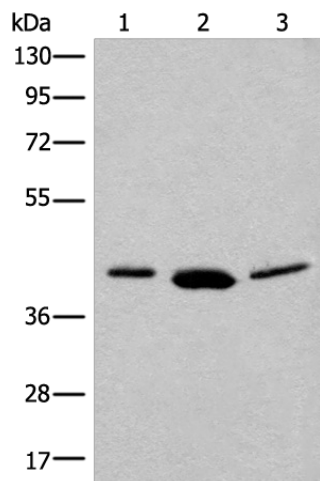
Product Type:	Primary Antibodies
Applications:	IHC, WB
Recommended Dilution:	WB: 200-1000 WB positive control: PC-3 cell, Human bladder transitional cell carcinoma grade 2-3 tissue, 231 cell lysates IHC: 30-150 Positive control: Human ovarian cancer Predicted cell location: Cytoplasm and Nucleus
Reactivity:	Human
Host:	Rabbit
Isotype:	IgG
Clonality:	Polyclonal
Immunogen:	Synthetic peptide of human MRI1
Formulation:	pH7.4 PBS, 0.05% NaN ₃ , 40% Glycerol
Concentration:	lot specific
Purification:	Antigen affinity purification
Conjugation:	Unconjugated
Storage:	Store at -20°C.
Stability:	1 year
Predicted Protein Size:	40 kDa
Gene Name:	methylthioribose-1-phosphate isomerase 1
Database Link:	Entrez Gene 84245 Human Q9BV20
Background:	This enzyme functions in the methionine salvage pathway by catalyzing the interconversion of methylthioribose-1-phosphate and methylthioribulose-1-phosphate. Elevated expression of the encoded protein is associated with metastatic melanoma and this protein promotes melanoma cell invasion independent of its enzymatic activity. Mutations in this gene may be associated with vanishing white matter disease (VMWD).



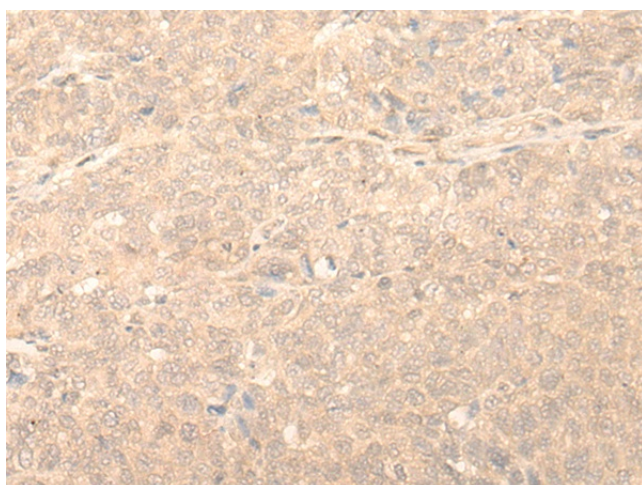
[View online »](#)

Synonyms: M1Pi; MGC3207; MTNA; Ypr118w

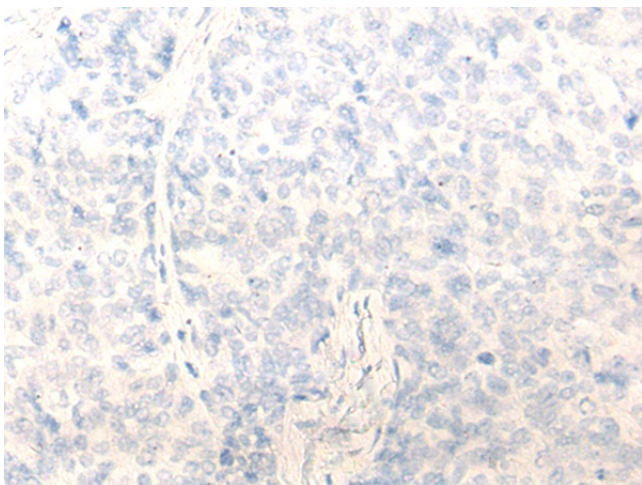
Product images:



Gel: 8%SDS-PAGE
 Lysate: 40 µg
 Lane 1-3: PC-3 cell
 Human bladder transitional cell carcinoma grade
 2-3 tissue
 231 cell lysates
 Primary antibody: [TA372457] (MRI1 Antibody) at
 dilution 1/250
 Secondary antibody: Goat anti rabbit IgG at
 1/8000 dilution
 Exposure time: 1 minute



Immunohistochemistry of paraffin-embedded
 Human ovarian cancer tissue using [TA372457]
 (MRI1 Antibody) at dilution 1/20 (Original
 magnification: ×200)



Immunohistochemistry of paraffin-embedded Human ovarian cancer tissue using [TA372457] (MRI1 Antibody) at dilution 1/20, treated with synthetic peptide. (Original magnification: $\times 200$)