

## Product datasheet for **TA372453**

### EFHD2 Rabbit Polyclonal Antibody

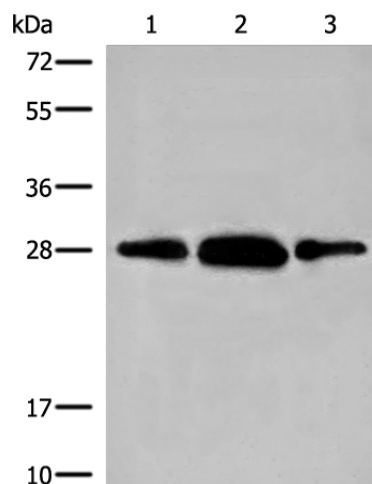
#### Product data:

Product Type:	Primary Antibodies
Applications:	IHC, WB
Recommended Dilution:	WB: 200-1000 WB positive control: Mouse thymus tissue, Mouse brain tissue and Human lung tissue lysates IHC: 20-100 Positive control: Human cervical cancer Predicted cell location: Cytoplasm and Cell membrane
Reactivity:	Human, Mouse, Rat
Host:	Rabbit
Isotype:	IgG
Clonality:	Polyclonal
Immunogen:	Synthetic peptide of human EFHD2
Formulation:	pH7.4 PBS, 0.05% NaN <sub>3</sub> , 40% Glycerol
Concentration:	lot specific
Purification:	Antigen affinity purification
Conjugation:	Unconjugated
Storage:	Store at -20°C.
Stability:	1 year
Predicted Protein Size:	27 kDa
Gene Name:	EF-hand domain family member D2
Database Link:	<a href="#">Entrez Gene 79180 Human Q96C19</a>
Background:	May regulate B-cell receptor (BCR)-induced immature and primary B-cell apoptosis. Plays a role as negative regulator of the canonical NF-kappa-B-activating branch. Controls spontaneous apoptosis through the regulation of BCL2L1 abundance.
Synonyms:	MGC4342; Swiprosin-1; SWS1

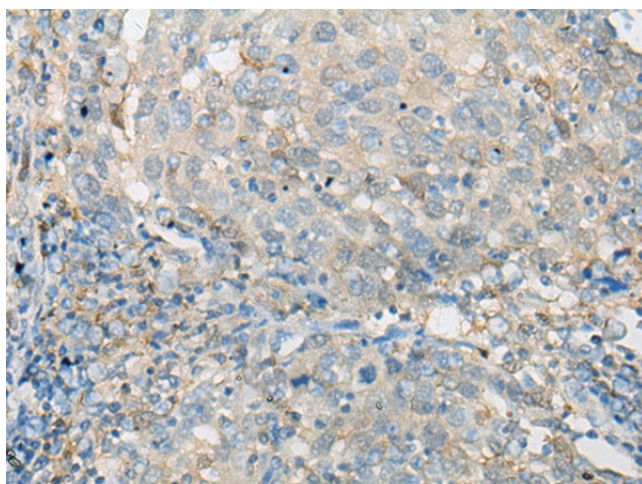


[View online »](#)

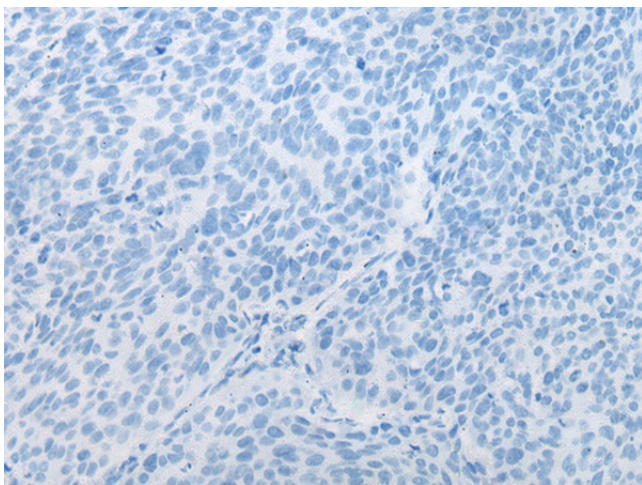
## Product images:



Gel: 12%SDS-PAGE  
Lysate: 40  $\mu$ g  
Lane 1-3: Mouse thymus tissue  
Mouse brain tissue and Human lung tissue  
lysates  
Primary antibody: TA372453 (EFHD2 Antibody) at  
dilution 1/250  
Secondary antibody: Goat anti rabbit IgG at  
1/8000 dilution  
Exposure time: 10 seconds



Immunohistochemistry of paraffin-embedded  
Human cervical cancer tissue using TA372453  
(EFHD2 Antibody) at dilution 1/20 (Original  
magnification:  $\times$ 200)



Immunohistochemistry of paraffin-embedded Human cervical cancer tissue using TA372453 (EFHD2 Antibody) at dilution 1/20, treated with synthetic peptide. (Original magnification: ×200)