

Product datasheet for **TA372450S**

EEA1 Rabbit Polyclonal Antibody

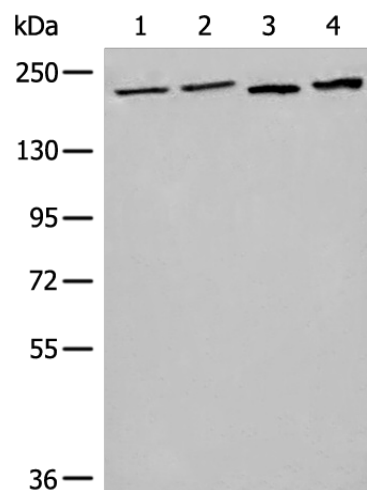
Product data:

Product Type:	Primary Antibodies
Applications:	WB
Recommended Dilution:	WB: 500-2000 WB positive control: NIH/3T3, RAW264.7 and 293T cell, Human metastatic malignant melanoma tissue lysates
Reactivity:	Human, Mouse
Host:	Rabbit
Isotype:	IgG
Clonality:	Polyclonal
Immunogen:	Synthetic peptide of human EEA1
Formulation:	pH7.4 PBS, 0.05% NaN ₃ , 40% Glycerol
Concentration:	lot specific
Purification:	Antigen affinity purification
Conjugation:	Unconjugated
Storage:	Store at -20°C.
Stability:	1 year
Predicted Protein Size:	163 kDa
Gene Name:	early endosome antigen 1
Database Link:	Entrez Gene 8411 Human Q15075
Background:	EEA1 is an early endosomal marker and a Rab5 effector protein essential for early endosomal membrane fusion and trafficking. The carboxy terminus of EEA1 contains a FYVE domain which binds to phosphatidylinositol-3-phosphate (PtdIns(3)P), targeting EEA1 to early endosomes. The stable association of EEA1 with the endosomal membrane is regulated by PI3 kinase, Rab5 and calcium/calmodulin. Once on the membrane, EEA1 interacts with Rab5, NSF and syntaxin 13 to promote early endosomal membrane docking and fusion.
Synonyms:	MST105; MSTP105; ZFYVE2



[View online »](#)

Product images:



Gel: 6%SDS-PAGE

Lysate: 40 μ g

Lane 1-4: NIH/3T3

RAW264.7 and 293T cell

Human metastatic malignant melanoma tissue lysates

Primary antibody: [TA372450] (EEA1 Antibody) at dilution 1/700

Secondary antibody: Goat anti rabbit IgG at 1/8000 dilution

Exposure time: 20 seconds