

Product datasheet for **TA372447S**

DZIP1 Rabbit Polyclonal Antibody

Product data:

Product Type:	Primary Antibodies
Applications:	IHC, WB
Recommended Dilution:	WB: 200-1000 WB positive control: PC-3 cell lysate IHC: 25-100 Positive control: Human liver cancer Predicted cell location: Cytoplasm
Reactivity:	Human
Host:	Rabbit
Isotype:	IgG
Clonality:	Polyclonal
Immunogen:	Synthetic peptide of human DZIP1
Formulation:	pH7.4 PBS, 0.05% NaN ₃ , 40% Glycerol
Concentration:	lot specific
Purification:	Antigen affinity purification
Conjugation:	Unconjugated
Storage:	Store at -20°C.
Stability:	1 year
Predicted Protein Size:	99 kDa
Gene Name:	DAZ interacting zinc finger protein 1
Database Link:	Entrez Gene 22873 Human Q86YF9



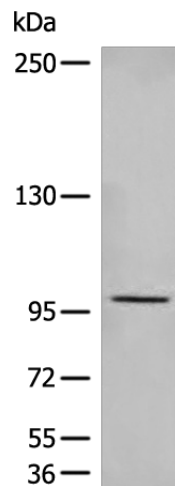
[View online »](#)

Background:

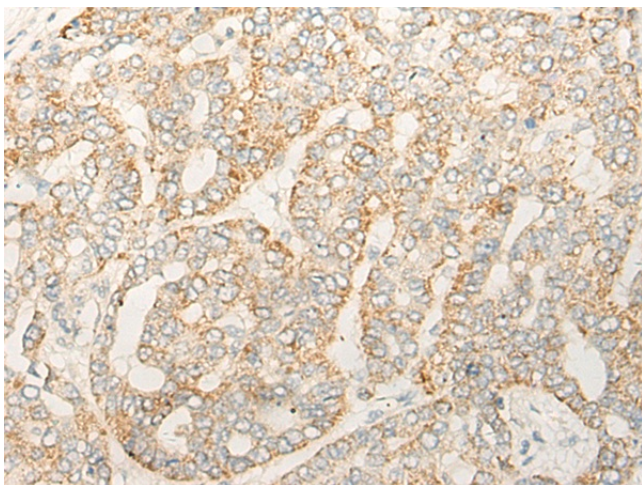
DZIP1 (DAZ interacting protein 1) is also known as DZIP or DZIP2 and is a 867 amino acid protein which is expressed as 3 isoforms, designated DZIPb, DZIPt1 and DZIPt2. DZIP1 is localized to testis, oocytes, ovary and fetal brain, as well as in embryonic stem cells and germ cells. In testis, DZIP1 is localized to the nucleus and also shows some cytoplasmic distribution in spermatogonia. DZIP1 belongs to the C2H2-type zinc-finger protein family, and, characteristic of the C2H2-type zinc-finger protein family, DZIP1 contains one C2H2-type zinc-finger region through which it is thought to interact with DAZ, an interaction that promotes spermiogenesis. DZIP1 expression is not found in those afflicted with Sertoli cell-only syndrome (characterized by the absence of germ cells in the testis), suggesting that the lack of DZIP1 may be involved in the pathogenesis of Sertoli cell-only syndrome-induced male sterility.

Synonyms:

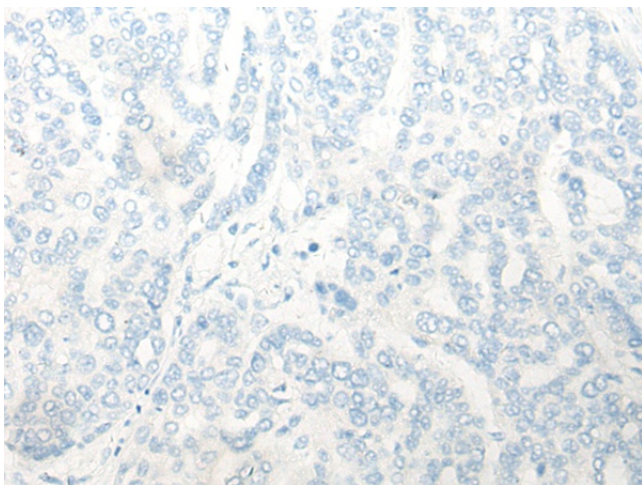
DZIP; DZIP2; DZIPt1; KIAA0996; OTTHUMP00000018564; OTTHUMP00000018565; RP11-23E3.3

Product images:

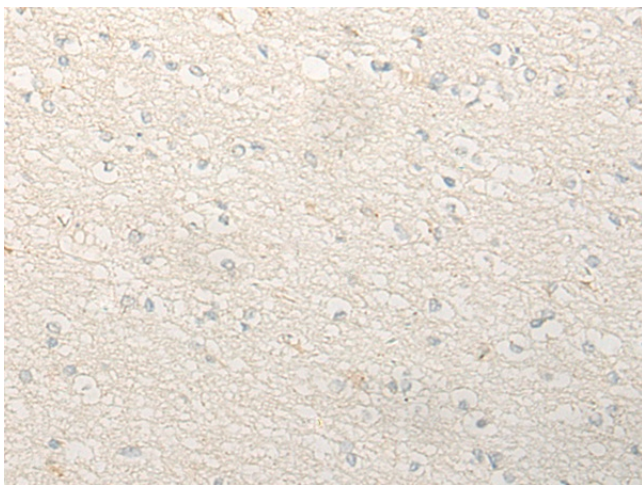
Gel: 6%SDS-PAGE
Lysate: 40 µg
Lane: PC-3 cell lysate
Primary antibody: [TA372447] (DZIP1 Antibody) at dilution 1/200
Secondary antibody: Goat anti rabbit IgG at 1/8000 dilution
Exposure time: 5 minutes



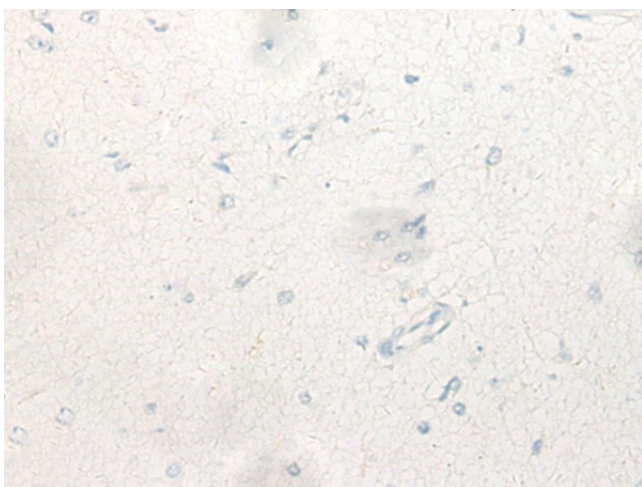
Immunohistochemistry of paraffin-embedded Human liver cancer tissue using [TA372447] (DZIP1 Antibody) at dilution 1/40 (Original magnification: $\times 200$)



Immunohistochemistry of paraffin-embedded Human liver cancer tissue using [TA372447] (DZIP1 Antibody) at dilution 1/40, treated with synthetic peptide. (Original magnification: $\times 200$)



Immunohistochemistry of paraffin-embedded Human brain tissue using [TA372447] (DZIP1 Antibody) at dilution 1/40 (Original magnification: $\times 200$)



Immunohistochemistry of paraffin-embedded Human brain tissue using [TA372447] (DZIP1 Antibody) at dilution 1/40, treated with synthetic peptide. (Original magnification: $\times 200$)