

## Product datasheet for **TA372446**

### DYNC1LI2 Rabbit Polyclonal Antibody

#### Product data:

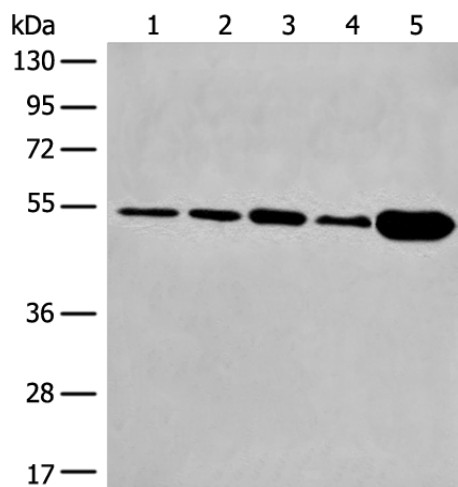
Product Type:	Primary Antibodies
Applications:	IHC, WB
Recommended Dilution:	WB: 200-1000 WB positive control: HeLa and PC-3 cell, Mouse brain tissue, SKOV3 cell, Human fetal brain tissue lysates IHC: 20-100 Positive control: Human liver cancer Predicted cell location: Cytoplasm
Reactivity:	Human, Mouse, Rat
Host:	Rabbit
Isotype:	IgG
Clonality:	Polyclonal
Immunogen:	Synthetic peptide of human DYNC1LI2
Formulation:	pH7.4 PBS, 0.05% NaN <sub>3</sub> , 40% Glycerol
Concentration:	lot specific
Purification:	Antigen affinity purification
Conjugation:	Unconjugated
Storage:	Store at -20°C.
Stability:	1 year
Predicted Protein Size:	54 kDa
Gene Name:	dynein cytoplasmic 1 light intermediate chain 2
Database Link:	<a href="#">Entrez Gene 1783 Human O43237</a>
Background:	Acts as one of several non-catalytic accessory components of the cytoplasmic dynein 1 complex that are thought to be involved in linking dynein to cargos and to adapter proteins that regulate dynein function. Cytoplasmic dynein 1 acts as a motor for the intracellular retrograde motility of vesicles and organelles along microtubules. May play a role in binding dynein to membranous organelles or chromosomes.



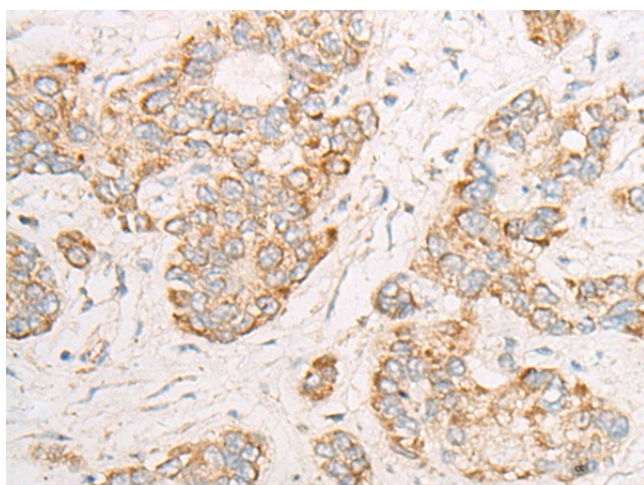
[View online »](#)

Synonyms: DNCLI2; LIC-2; LIC2; LIC53/55

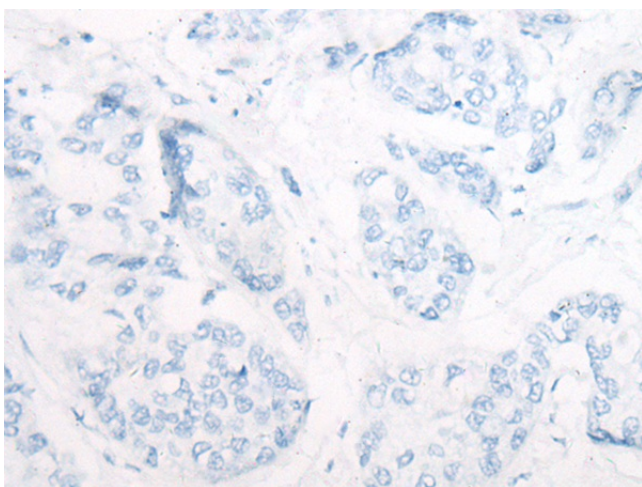
### Product images:



Gel: 8%SDS-PAGE  
Lysate: 40 µg  
Lane 1-5: HeLa and PC-3 cell  
Mouse brain tissue  
SKOV3 cell  
Human fetal brain tissue lysates  
Primary antibody: TA372446 (DYNC1LI2 Antibody)  
at dilution 1/400  
Secondary antibody: Goat anti rabbit IgG at  
1/8000 dilution  
Exposure time: 3 minutes



Immunohistochemistry of paraffin-embedded  
Human liver cancer tissue using TA372446  
(DYNC1LI2 Antibody) at dilution 1/25 (Original  
magnification: ×200)



Immunohistochemistry of paraffin-embedded Human liver cancer tissue using TA372446 (DYNC1LI2 Antibody) at dilution 1/25, treated with synthetic peptide. (Original magnification: ×200)