

## Product datasheet for **TA372440S**

### DPCD Rabbit Polyclonal Antibody

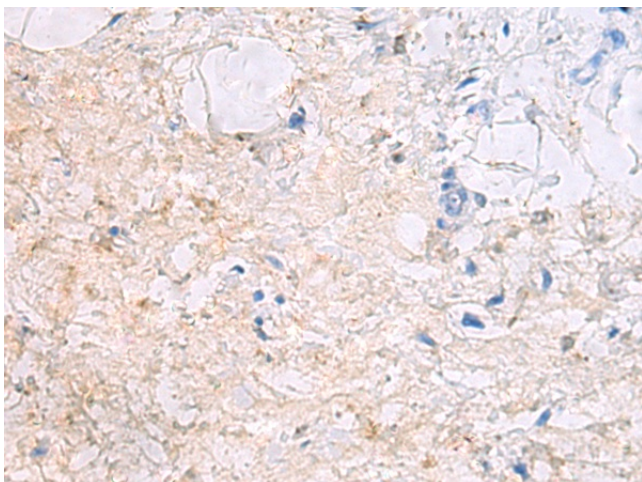
#### Product data:

Product Type:	Primary Antibodies
Applications:	IHC
Recommended Dilution:	IHC: 50-100 Positive control: Human gastric cancer Predicted cell location: Cytoplasm
Reactivity:	Human, Mouse, Rat
Host:	Rabbit
Isotype:	IgG
Clonality:	Polyclonal
Immunogen:	Synthetic peptide of human DPCD
Formulation:	pH7.4 PBS, 0.05% NaN <sub>3</sub> , 40% Glycerol
Concentration:	lot specific
Purification:	Antigen affinity purification
Conjugation:	Unconjugated
Storage:	Store at -20°C.
Stability:	1 year
Gene Name:	deleted in primary ciliary dyskinesia homolog (mouse)
Database Link:	<a href="#">Entrez Gene 25911 Human Q9BVM2</a>
Background:	This gene in mouse encodes a protein that may be involved in the generation and maintenance of ciliated cells. In mouse, expression of this gene increases during ciliated cell differentiation, and disruption of this gene has been linked to primary ciliary dyskinesia.
Synonyms:	RP11-529I10.4

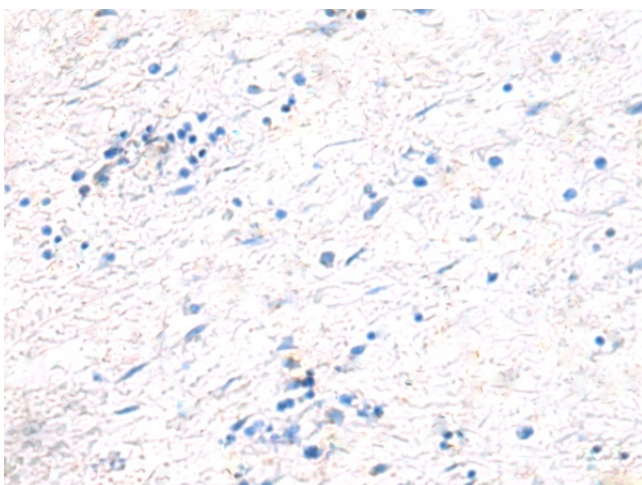


[View online »](#)

## Product images:



Immunohistochemistry of paraffin-embedded Human gastric cancer tissue using [TA372440] (DPCD Antibody) at dilution 1/50 (Original magnification: ×200)



Immunohistochemistry of paraffin-embedded Human gastric cancer tissue using [TA372440] (DPCD Antibody) at dilution 1/50, treated with synthetic peptide. (Original magnification: ×200)