

## Product datasheet for **TA372428**

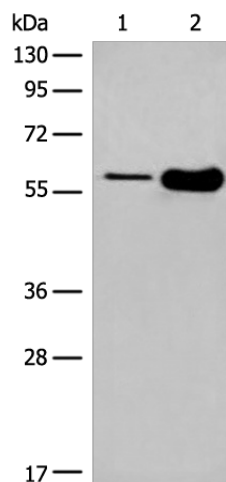
### **DLL3 Rabbit Polyclonal Antibody**

#### **Product data:**

<b>Product Type:</b>	Primary Antibodies
<b>Applications:</b>	IHC, WB
<b>Recommended Dilution:</b>	WB: 200-1000 WB positive control: Mouse brain tissue and Human fetal brain tissue lysates IHC: 20-100 Positive control: Human cervical cancer Predicted cell location: Cytoplasm
<b>Reactivity:</b>	Human, Mouse
<b>Host:</b>	Rabbit
<b>Isotype:</b>	IgG
<b>Clonality:</b>	Polyclonal
<b>Immunogen:</b>	Synthetic peptide of human DLL3
<b>Formulation:</b>	pH7.4 PBS, 0.05% NaN <sub>3</sub> , 40% Glycerol
<b>Concentration:</b>	lot specific
<b>Purification:</b>	Antigen affinity purification
<b>Conjugation:</b>	Unconjugated
<b>Storage:</b>	Store at -20°C.
<b>Stability:</b>	1 year
<b>Predicted Protein Size:</b>	65 kDa
<b>Gene Name:</b>	delta like canonical Notch ligand 3
<b>Database Link:</b>	<a href="#">Entrez Gene 10683 Human Q9NYJ7</a>
<b>Background:</b>	This gene encodes a member of the delta protein ligand family. This family functions as Notch ligands that are characterized by a DSL domain, EGF repeats, and a transmembrane domain. Mutations in this gene cause autosomal recessive spondylocostal dysostosis 1. Two transcript variants encoding distinct isoforms have been identified for this gene.
<b>Synonyms:</b>	Delta3; SCDO1



[View online »](#)

**Product images:**

Gel: 8%SDS-PAGE

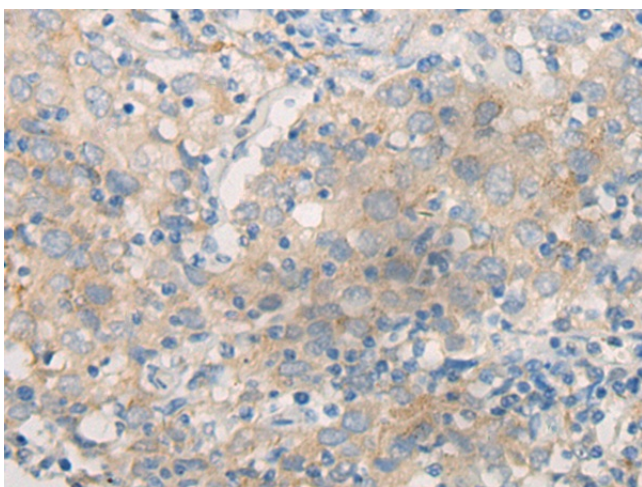
Lysate: 40  $\mu$ g

Lane 1-2: Mouse brain tissue and Human fetal brain tissue lysates

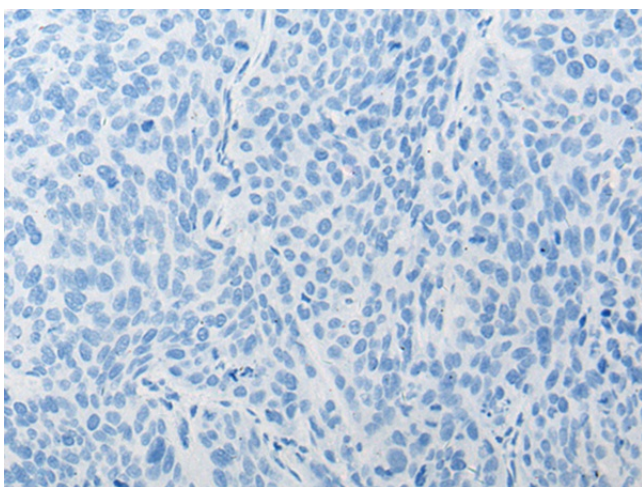
Primary antibody: TA372428 (DLL3 Antibody) at dilution 1/200

Secondary antibody: Goat anti rabbit IgG at 1/8000 dilution

Exposure time: 5 minutes



Immunohistochemistry of paraffin-embedded Human cervical cancer tissue using TA372428 (DLL3 Antibody) at dilution 1/20 (Original magnification:  $\times$ 200)



Immunohistochemistry of paraffin-embedded Human cervical cancer tissue using TA372428 (DLL3 Antibody) at dilution 1/20, treated with synthetic peptide. (Original magnification: ×200)