

Product datasheet for **TA372423S**

DIXDC1 Rabbit Polyclonal Antibody

Product data:

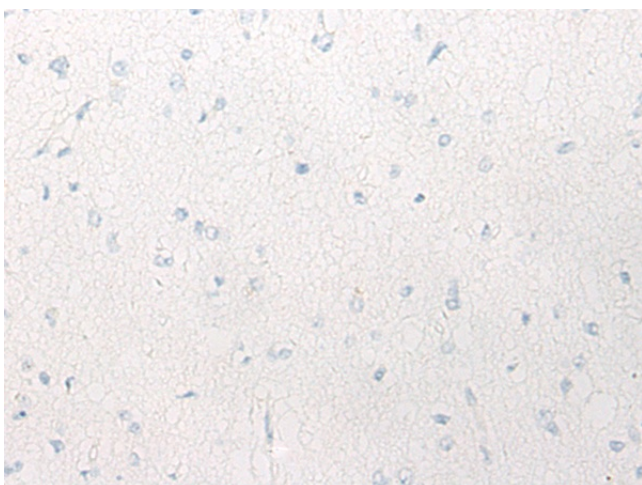
Product Type:	Primary Antibodies
Applications:	IHC
Recommended Dilution:	IHC: 10-50 Positive control: Human brain Predicted cell location: Cytoplasm
Reactivity:	Human, Rat
Host:	Rabbit
Isotype:	IgG
Clonality:	Polyclonal
Immunogen:	Synthetic peptide of human DIXDC1
Formulation:	pH7.4 PBS, 0.05% NaN ₃ , 40% Glycerol
Concentration:	lot specific
Purification:	Antigen affinity purification
Conjugation:	Unconjugated
Storage:	Store at -20°C.
Stability:	1 year
Gene Name:	DIX domain containing 1
Database Link:	Entrez Gene 85458 Human Q155Q3
Background:	The protein encoded by this gene is a positive regulator of the Wnt signaling pathway. The encoded protein is found associated with gamma tubulin at the centrosome. Alternative splicing results in multiple transcript variants encoding different isoforms.
Synonyms:	CCD1; Coiled-coil-DIX1; KIAA1735



[View online »](#)

Product images:

Immunohistochemistry of paraffin-embedded Human brain tissue using [TA372423] (DIXDC1 Antibody) at dilution 1/20 (Original magnification: ×200)



Immunohistochemistry of paraffin-embedded Human brain tissue using [TA372423] (DIXDC1 Antibody) at dilution 1/20, treated with synthetic peptide. (Original magnification: ×200)