

## Product datasheet for **TA372423**

### DIXDC1 Rabbit Polyclonal Antibody

#### Product data:

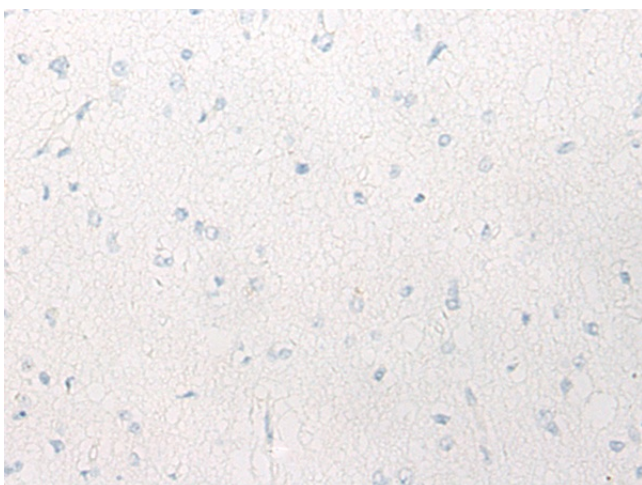
Product Type:	Primary Antibodies
Applications:	IHC
Recommended Dilution:	IHC: 10-50 Positive control: Human brain Predicted cell location: Cytoplasm
Reactivity:	Human, Rat
Host:	Rabbit
Isotype:	IgG
Clonality:	Polyclonal
Immunogen:	Synthetic peptide of human DIXDC1
Formulation:	pH7.4 PBS, 0.05% NaN <sub>3</sub> , 40% Glycerol
Concentration:	lot specific
Purification:	Antigen affinity purification
Conjugation:	Unconjugated
Storage:	Store at -20°C.
Stability:	1 year
Gene Name:	DIX domain containing 1
Database Link:	<a href="#">Entrez Gene 85458 Human Q155Q3</a>
Background:	The protein encoded by this gene is a positive regulator of the Wnt signaling pathway. The encoded protein is found associated with gamma tubulin at the centrosome. Alternative splicing results in multiple transcript variants encoding different isoforms.
Synonyms:	CCD1; Coiled-coil-DIX1; KIAA1735



[View online »](#)

**Product images:**

Immunohistochemistry of paraffin-embedded Human brain tissue using TA372423 (DIXDC1 Antibody) at dilution 1/20 (Original magnification: ×200)



Immunohistochemistry of paraffin-embedded Human brain tissue using TA372423 (DIXDC1 Antibody) at dilution 1/20, treated with synthetic peptide. (Original magnification: ×200)