

## Product datasheet for **TA372418S**

### Desmuslin (SYNM) Rabbit Polyclonal Antibody

#### Product data:

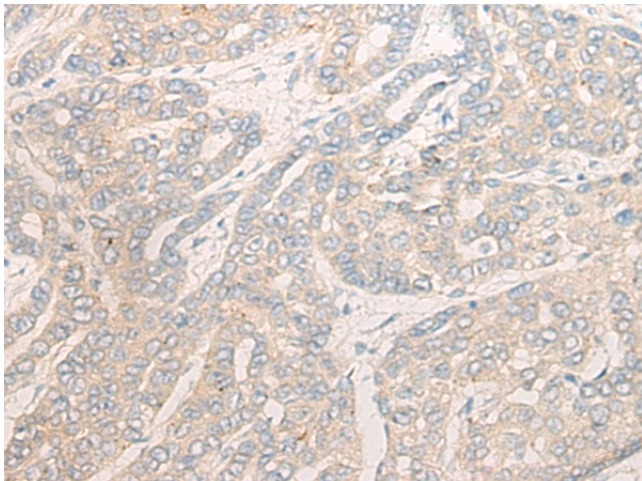
Product Type:	Primary Antibodies
Applications:	IHC
Recommended Dilution:	IHC: 20-100 Positive control: Human liver cancer Predicted cell location: Cytoplasm
Reactivity:	Human
Host:	Rabbit
Isotype:	IgG
Clonality:	Polyclonal
Immunogen:	Synthetic peptide of human SYNM
Formulation:	pH7.4 PBS, 0.05% NaN <sub>3</sub> , 40% Glycerol
Concentration:	lot specific
Purification:	Antigen affinity purification
Conjugation:	Unconjugated
Storage:	Store at -20°C.
Stability:	1 year
Gene Name:	synemin
Database Link:	<a href="#">Entrez Gene 23336 Human O15061</a>

**Background:** The protein encoded by this gene is an intermediate filament (IF) family member. IF proteins are cytoskeletal proteins that confer resistance to mechanical stress and are encoded by a dispersed multigene family. This protein has been found to form a linkage between desmin, which is a subunit of the IF network, and the extracellular matrix, and provides an important structural support in muscle. Two alternatively spliced variants encoding different isoforms have been described for this gene.

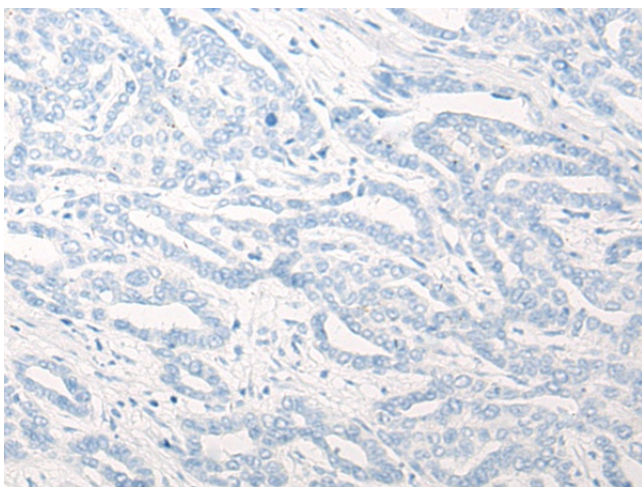
**Synonyms:** desmuslin; DMN; KIAA0353; SYN



[View online »](#)

**Product images:**

Immunohistochemistry of paraffin-embedded Human liver cancer tissue using [TA372418] (SYNM Antibody) at dilution 1/20 (Original magnification: ×200)



Immunohistochemistry of paraffin-embedded Human liver cancer tissue using [TA372418] (SYNM Antibody) at dilution 1/20, treated with synthetic peptide. (Original magnification: ×200)