

## Product datasheet for **TA372415**

### Density Regulated Protein (DENR) Rabbit Polyclonal Antibody

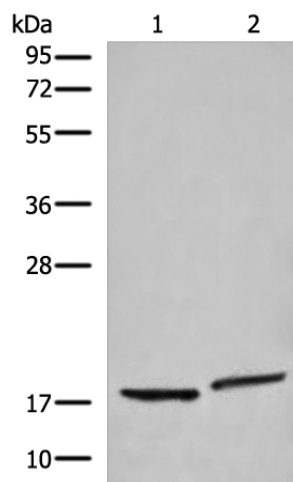
#### Product data:

|                         |                                                                                                                                                                                                                                                                                                                                                                                                                                                                                                                                 |
|-------------------------|---------------------------------------------------------------------------------------------------------------------------------------------------------------------------------------------------------------------------------------------------------------------------------------------------------------------------------------------------------------------------------------------------------------------------------------------------------------------------------------------------------------------------------|
| Product Type:           | Primary Antibodies                                                                                                                                                                                                                                                                                                                                                                                                                                                                                                              |
| Applications:           | WB                                                                                                                                                                                                                                                                                                                                                                                                                                                                                                                              |
| Recommended Dilution:   | WB: 200-1000<br>WB positive control: Human fetal brain tissue and Mouse heart tissue lysates                                                                                                                                                                                                                                                                                                                                                                                                                                    |
| Reactivity:             | Human, Mouse                                                                                                                                                                                                                                                                                                                                                                                                                                                                                                                    |
| Host:                   | Rabbit                                                                                                                                                                                                                                                                                                                                                                                                                                                                                                                          |
| Isotype:                | IgG                                                                                                                                                                                                                                                                                                                                                                                                                                                                                                                             |
| Clonality:              | Polyclonal                                                                                                                                                                                                                                                                                                                                                                                                                                                                                                                      |
| Immunogen:              | Synthetic peptide of human DENR                                                                                                                                                                                                                                                                                                                                                                                                                                                                                                 |
| Formulation:            | pH7.4 PBS, 0.05% NaN <sub>3</sub> , 40% Glycerol                                                                                                                                                                                                                                                                                                                                                                                                                                                                                |
| Concentration:          | lot specific                                                                                                                                                                                                                                                                                                                                                                                                                                                                                                                    |
| Purification:           | Antigen affinity purification                                                                                                                                                                                                                                                                                                                                                                                                                                                                                                   |
| Conjugation:            | Unconjugated                                                                                                                                                                                                                                                                                                                                                                                                                                                                                                                    |
| Storage:                | Store at -20°C.                                                                                                                                                                                                                                                                                                                                                                                                                                                                                                                 |
| Stability:              | 1 year                                                                                                                                                                                                                                                                                                                                                                                                                                                                                                                          |
| Predicted Protein Size: | 22 kDa                                                                                                                                                                                                                                                                                                                                                                                                                                                                                                                          |
| Gene Name:              | density-regulated protein                                                                                                                                                                                                                                                                                                                                                                                                                                                                                                       |
| Database Link:          | <a href="#">Entrez Gene 8562 Human O43583</a>                                                                                                                                                                                                                                                                                                                                                                                                                                                                                   |
| Background:             | This gene encodes a protein whose expression was found to increase in cultured cells at high density but not during growth arrest. This gene was also shown to have increased expression in cells overexpressing HER-2/neu proto-oncogene. The protein contains an SUI1 domain. In budding yeast, SUI1 is a translation initiation factor that along with eIF-2 and the initiator tRNA-Met, directs the ribosome to the proper translation start site. Proteins similar to SUI have been found in mammals, insects, and plants. |
| Synonyms:               | DRP; DRP1; SMAP-3                                                                                                                                                                                                                                                                                                                                                                                                                                                                                                               |



[View online »](#)

## Product images:



Gel: 12%SDS-PAGE  
Lysate: 40  $\mu$ g  
Lane 1-2: Human fetal brain tissue and Mouse heart tissue lysates  
Primary antibody: TA372415 (DENR Antibody) at dilution 1/300  
Secondary antibody: Goat anti rabbit IgG at 1/8000 dilution  
Exposure time: 2 minutes