

Product datasheet for **TA372413S**

gamma Sarcoglycan (SGCG) Rabbit Polyclonal Antibody

Product data:

Product Type:	Primary Antibodies
Applications:	IHC, WB
Recommended Dilution:	WB: 200-1000 WB positive control: Mouse liver tissue lysate IHC: 50-200 Positive control: Human thyroid cancer Predicted cell location: Cytoplasm and Cell membrane
Reactivity:	Human, Mouse
Host:	Rabbit
Isotype:	IgG
Clonality:	Polyclonal
Immunogen:	Synthetic peptide of human SGCG
Formulation:	pH7.4 PBS, 0.05% NaN ₃ , 40% Glycerol
Concentration:	lot specific
Purification:	Antigen affinity purification
Conjugation:	Unconjugated
Storage:	Store at -20°C.
Stability:	1 year
Predicted Protein Size:	32 kDa
Gene Name:	sarcoglycan gamma
Database Link:	Entrez Gene 6445 Human Q13326



[View online »](#)

Background:

This gene encodes gamma-sarcoglycan, one of several sarcolemmal transmembrane glycoproteins that interact with dystrophin. The dystrophin-glycoprotein complex (DGC) spans the sarcolemma and is comprised of dystrophin, syntrophin, alpha- and beta-dystroglycans and sarcoglycans. The DGC provides a structural link between the subsarcolemmal cytoskeleton and the extracellular matrix of muscle cells. Defects in the encoded protein can lead to early onset autosomal recessive muscular dystrophy, in particular limb-girdle muscular dystrophy, type 2C (LGMD2C).

Synonyms:

35DAG; A4; DAGA4; DMDA; DMDA1; Gamma-SG; LGMD2C; MAM; MGC130048; SCARMD2; SCG3; TYPE

Product images:

kDa

130—

95 —

72 —

55 —

36 —

28 —

17 —



Gel: 8%SDS-PAGE

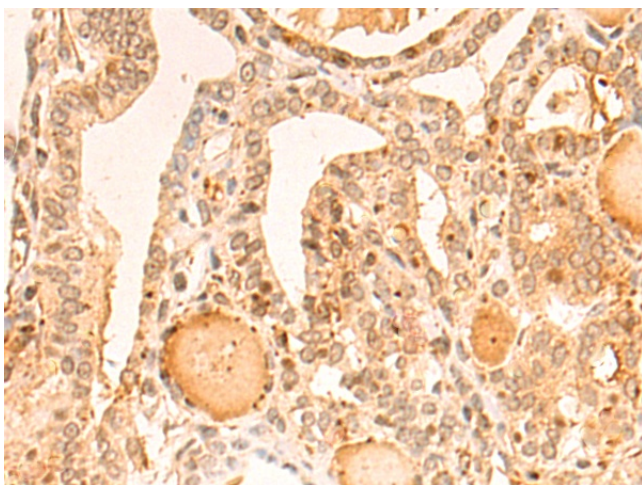
Lysate: 40 µg

Lane: Mouse liver tissue lysate

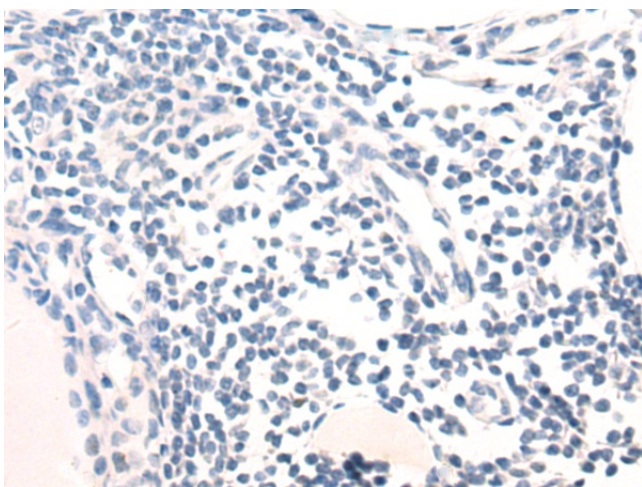
Primary antibody: [TA372413] (SGCG Antibody) at dilution 1/400

Secondary antibody: Goat anti rabbit IgG at 1/5000 dilution

Exposure time: 30 seconds



Immunohistochemistry of paraffin-embedded Human thyroid cancer tissue using [TA372413] (SGCG Antibody) at dilution 1/55 (Original magnification: ×200)



Immunohistochemistry of paraffin-embedded Human thyroid cancer tissue using [TA372413] (SGCG Antibody) at dilution 1/55, treated with synthetic peptide. (Original magnification: ×200)