

## Product datasheet for **TA372408**

### H2BC1 Rabbit Polyclonal Antibody

#### Product data:

Product Type:	Primary Antibodies
Applications:	IHC, WB
Recommended Dilution:	WB: 500-2000 WB positive control: Human prostate tissue, PC-3, A549 and TM4 cell lysates IHC: 50-300 Positive control: Human colorectal cancer Predicted cell location: Nucleus
Reactivity:	Human, Mouse, Rat
Host:	Rabbit
Isotype:	IgG
Clonality:	Polyclonal
Immunogen:	Synthetic peptide of human H2BC1
Formulation:	pH7.4 PBS, 0.05% NaN <sub>3</sub> , 40% Glycerol
Concentration:	lot specific
Purification:	Antigen affinity purification
Conjugation:	Unconjugated
Storage:	Store at -20°C.
Stability:	1 year
Predicted Protein Size:	14 kDa
Gene Name:	histone cluster 1, H2ba
Database Link:	<a href="#">Entrez Gene 255626 Human Q96A08</a>



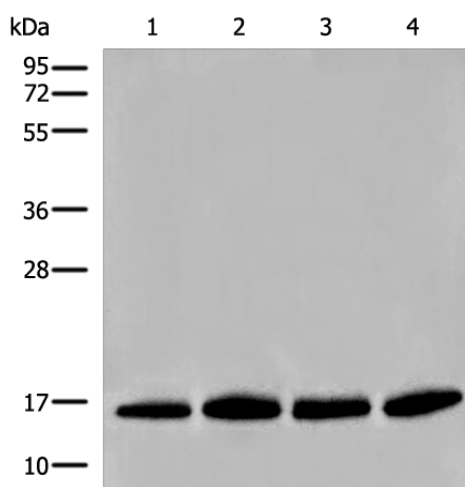
[View online »](#)

**Background:**

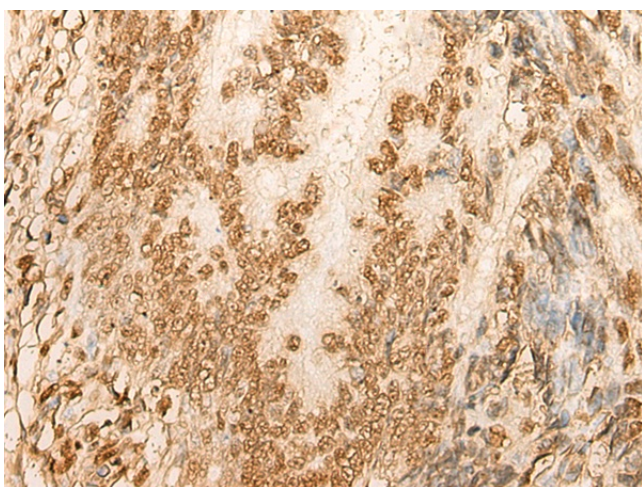
Histones are basic nuclear proteins that are responsible for the nucleosome structure of the chromosomal fiber in eukaryotes. Nucleosomes consist of approximately 146 bp of DNA wrapped around a histone octamer composed of pairs of each of the four core histones (H2A, H2B, H3, and H4). The chromatin fiber is further compacted through the interaction of a linker histone, H1, with the DNA between the nucleosomes to form higher order chromatin structures. This gene is intronless and encodes a replication-dependent histone that is a testis/sperm-specific member of the histone H2B family. Transcripts from this gene contain a palindromic termination element. [provided by RefSeq, Aug 2015]

**Synonyms:**

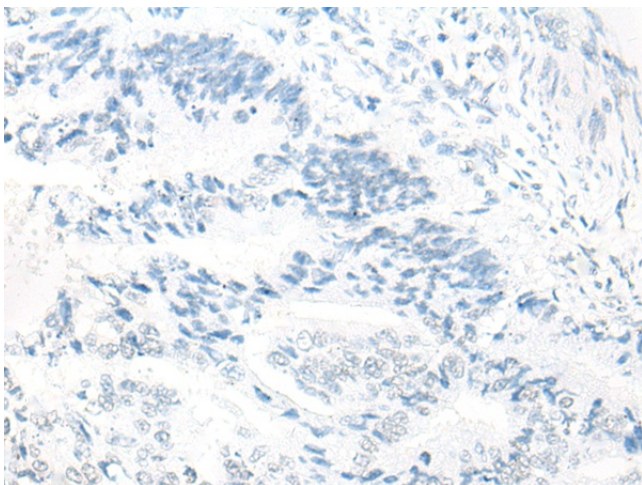
bA317E16.3; H2BFU; STBP; TSH2B

**Product images:**


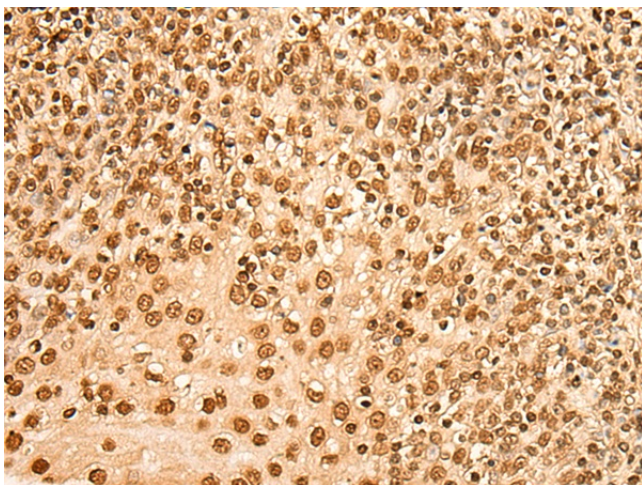
Gel: 12%SDS-PAGE  
 Lysate: 40 µg  
 Lane 1-4: Human prostate tissue  
 PC-3  
 A549 and TM4 cell lysates  
 Primary antibody: TA372408 (H2BC1 Antibody) at dilution 1/500  
 Secondary antibody: Goat anti rabbit IgG at 1/8000 dilution  
 Exposure time: 3 seconds



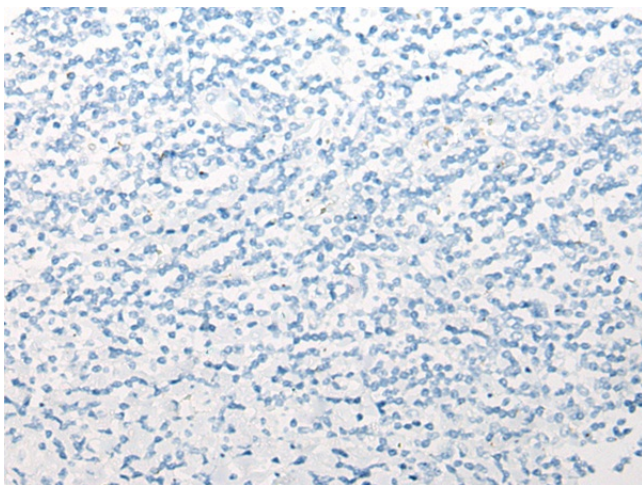
Immunohistochemistry of paraffin-embedded Human colorectal cancer tissue using TA372408 (H2BC1 Antibody) at dilution 1/45 (Original magnification: ×200)



Immunohistochemistry of paraffin-embedded Human colorectal cancer tissue using TA372408 (H2BC1 Antibody) at dilution 1/45, treated with synthetic peptide. (Original magnification: ×200)



Immunohistochemistry of paraffin-embedded Human tonsil tissue using TA372408 (H2BC1 Antibody) at dilution 1/45 (Original magnification: ×200)



Immunohistochemistry of paraffin-embedded Human tonsil tissue using TA372408 (H2BC1 Antibody) at dilution 1/45, treated with synthetic peptide. (Original magnification: ×200)