

## Product datasheet for **TA372398S**

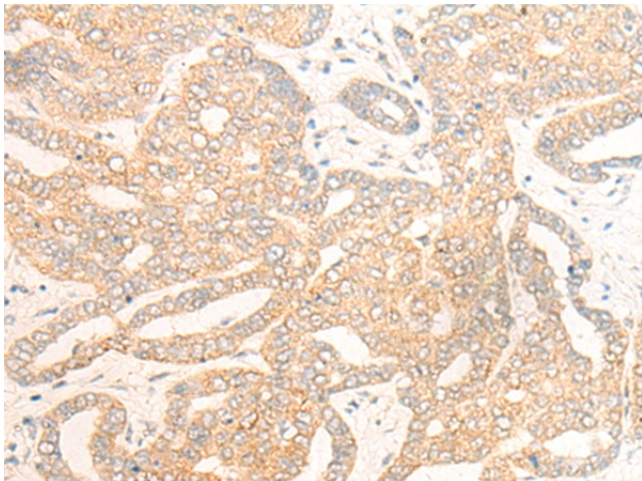
### DCAF5 Rabbit Polyclonal Antibody

#### Product data:

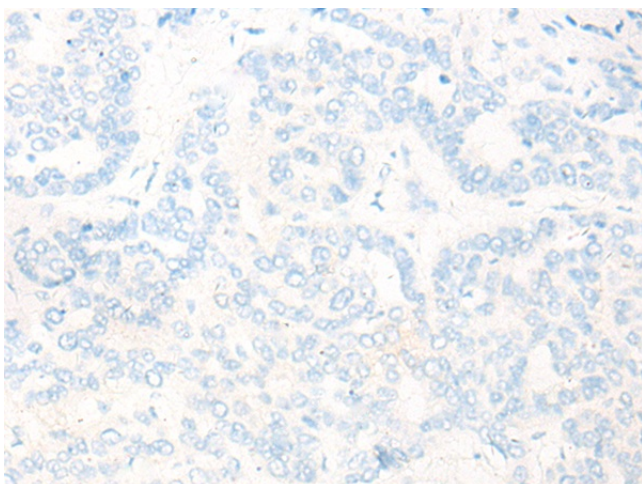
Product Type:	Primary Antibodies
Applications:	IHC
Recommended Dilution:	IHC: 20-100 Positive control: Human liver cancer Predicted cell location: Cytoplasm
Reactivity:	Human, Mouse
Host:	Rabbit
Isotype:	IgG
Clonality:	Polyclonal
Immunogen:	Synthetic peptide of human DCAF5
Formulation:	pH7.4 PBS, 0.05% NaN <sub>3</sub> , 40% Glycerol
Concentration:	lot specific
Purification:	Antigen affinity purification
Conjugation:	Unconjugated
Storage:	Store at -20°C.
Stability:	1 year
Gene Name:	DDB1 and CUL4 associated factor 5
Database Link:	<a href="#">Entrez Gene 8816 Human Q96JK2</a>
Background:	May function as a substrate receptor for CUL4-DDB1 E3 ubiquitin-protein ligase complex.
Synonyms:	BCRG2; BCRP2; D14S1461E; WDR22



[View online »](#)

**Product images:**

Immunohistochemistry of paraffin-embedded Human liver cancer tissue using [TA372398] (DCAF5 Antibody) at dilution 1/20 (Original magnification: ×200)



Immunohistochemistry of paraffin-embedded Human liver cancer tissue using [TA372398] (DCAF5 Antibody) at dilution 1/20, treated with synthetic peptide. (Original magnification: ×200)