

## Product datasheet for **TA372391S**

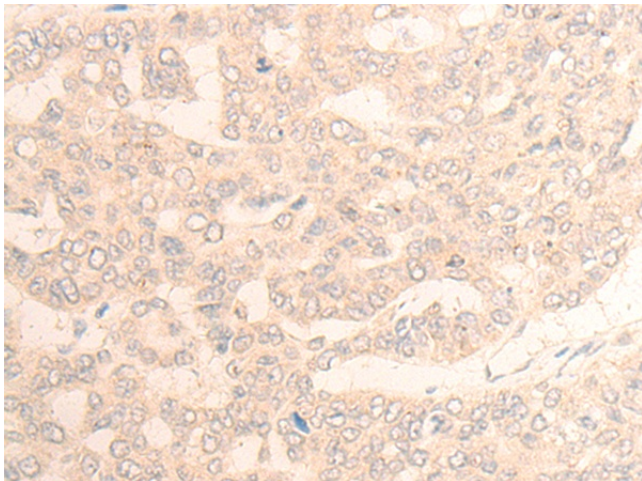
### DAGLB Rabbit Polyclonal Antibody

#### Product data:

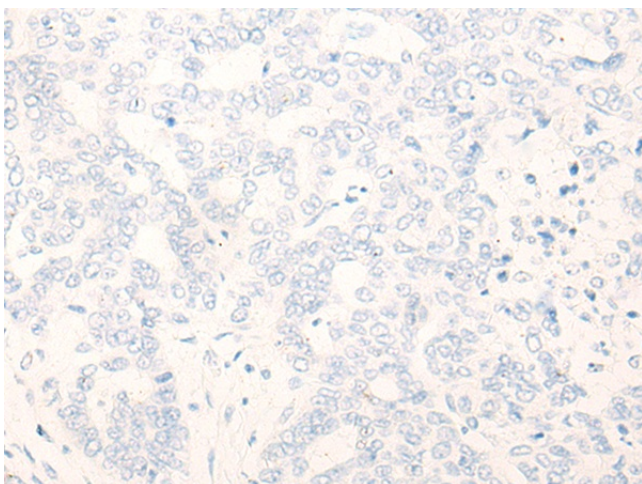
Product Type:	Primary Antibodies
Applications:	IHC
Recommended Dilution:	IHC: 20-100 Positive control: Human liver cancer Predicted cell location: Cell membrane
Reactivity:	Human
Host:	Rabbit
Isotype:	IgG
Clonality:	Polyclonal
Immunogen:	Synthetic peptide of human DAGLB
Formulation:	pH7.4 PBS, 0.05% NaN <sub>3</sub> , 40% Glycerol
Concentration:	lot specific
Purification:	Antigen affinity purification
Conjugation:	Unconjugated
Storage:	Store at -20°C.
Stability:	1 year
Gene Name:	diacylglycerol lipase beta
Database Link:	<a href="#">Entrez Gene 221955 Human Q8NCG7</a>
Background:	Members of the AB hydrolase superfamily have diverse catalytic functions and play a crucial role in the metabolism of lipids. DAGLβ (diacylglycerol lipase beta), also known as KCCR13L, is a 672 amino acid multi-pass membrane protein that belongs to the AB hydrolase superfamily. DAGLβ uses calcium as a cofactor to catalyze the hydrolysis of diacylglycerol (DAG) to 2-arachidonoyl-glycerol (2-AG), a reaction that is required for axonal growth and for retrograde synaptic signaling at mature synapses. DAGLβ functions at an optimal pH of 7 and its activity is inhibited by p-hydroxy-mercuri-benzoate and HgCl <sub>2</sub> , but not PMSF. There are three isoforms of DAGLβ that are produced as a result of alternative splicing events.
Synonyms:	DAGLBETA; DGL-beta; FLJ33624; FLJ33909; FLJ45532; KCCR13L



[View online »](#)

**Product images:**

Immunohistochemistry of paraffin-embedded Human liver cancer tissue using [TA372391] (DAGLB Antibody) at dilution 1/20 (Original magnification: ×200)



Immunohistochemistry of paraffin-embedded Human liver cancer tissue using [TA372391] (DAGLB Antibody) at dilution 1/20, treated with synthetic peptide. (Original magnification: ×200)