

Product datasheet for **TA372391**

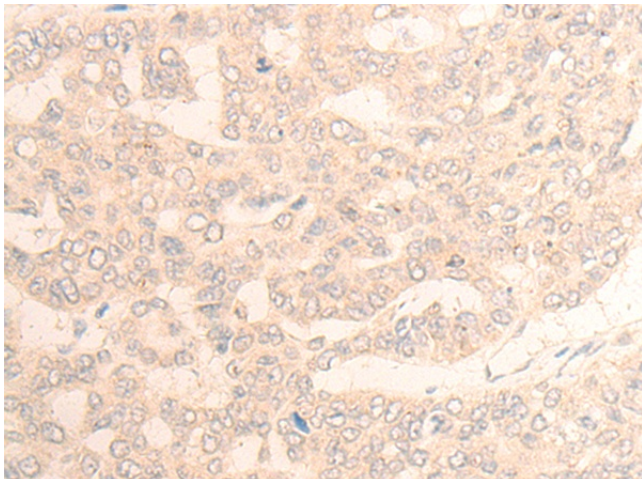
DAGLB Rabbit Polyclonal Antibody

Product data:

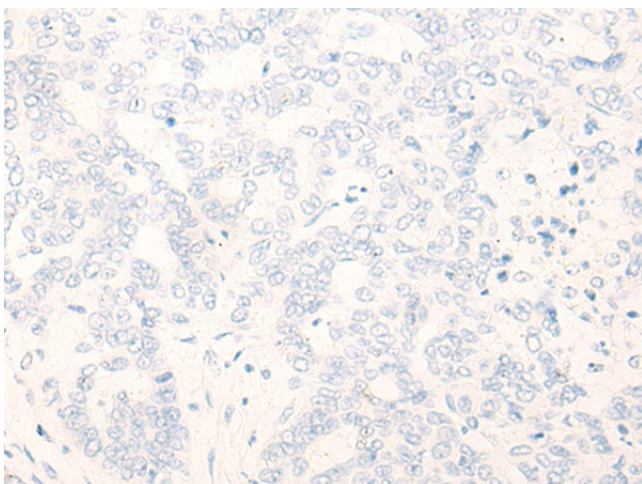
| | |
|-----------------------|---|
| Product Type: | Primary Antibodies |
| Applications: | IHC |
| Recommended Dilution: | IHC: 20-100 Positive control: Human liver cancer Predicted cell location: Cell membrane |
| Reactivity: | Human |
| Host: | Rabbit |
| Isotype: | IgG |
| Clonality: | Polyclonal |
| Immunogen: | Synthetic peptide of human DAGLB |
| Formulation: | pH7.4 PBS, 0.05% NaN ₃ , 40% Glycerol |
| Concentration: | lot specific |
| Purification: | Antigen affinity purification |
| Conjugation: | Unconjugated |
| Storage: | Store at -20°C. |
| Stability: | 1 year |
| Gene Name: | diacylglycerol lipase beta |
| Database Link: | Entrez Gene 221955 Human Q8NCG7 |
| Background: | Members of the AB hydrolase superfamily have diverse catalytic functions and play a crucial role in the metabolism of lipids. DAGL β (diacylglycerol lipase beta), also known as KCCR13L, is a 672 amino acid multi-pass membrane protein that belongs to the AB hydrolase superfamily. DAGL β uses calcium as a cofactor to catalyze the hydrolysis of diacylglycerol (DAG) to 2-arachidonoyl-glycerol (2-AG), a reaction that is required for axonal growth and for retrograde synaptic signaling at mature synapses. DAGL β functions at an optimal pH of 7 and its activity is inhibited by p-hydroxy-mercuri-benzoate and HgCl ₂ , but not PMSF. There are three isoforms of DAGL β that are produced as a result of alternative splicing events. |
| Synonyms: | DAGLBETA; DGL-beta; FLJ33624; FLJ33909; FLJ45532; KCCR13L |



[View online »](#)

Product images:

Immunohistochemistry of paraffin-embedded Human liver cancer tissue using TA372391 (DAGLB Antibody) at dilution 1/20 (Original magnification: $\times 200$)



Immunohistochemistry of paraffin-embedded Human liver cancer tissue using TA372391 (DAGLB Antibody) at dilution 1/20, treated with synthetic peptide. (Original magnification: $\times 200$)